



EU PRICES of COW'S RAW MILK in EURO/100 kg

Source: Regulation (EU) No 2017/1185 Article 12(a) - Annex II.4(a) (prices of raw milk at real fat and protein content paid to milk producers)

	Belgium	Bulgaria	Czech Rep.	Denmark	Germany	Estonia	Ireland	Greece	Spain	France	Croatia	Italy	Cyprus	Latvia	Lithuania	Luxembourg	Hungary	Malta	Netherlands	Austria	Poland	Portugal	Romania	Slovenia	Slovakia	Finland	Sweden	EU (without UK)	U.K.	EU + UK	% EU (without UK) compared to previous month (%)	
2018m07	30.17	29.36	30.79	37.17	33.19	30.18	31.76	39.53	30.29	33.70	32.16	35.25	56.67	27.65	25.79	31.36	28.04	51.57	35.75	35.33	30.38	30.07	28.45	29.78	30.77	35.86	33.02	33.12	31.26	32.94	+1.9%	Jul-18
2018m08	31.82	29.38	31.17	37.15	33.83	30.34	33.41	39.59	30.49	34.63	31.65	35.26	56.68	27.97	25.74	32.49	28.33	53.21	35.75	35.12	30.72	29.79	29.00	29.89	30.82	36.00	33.29	33.63	33.09	33.57	+1.5%	Aug-18
2018m09	33.73	29.72	31.96	37.95	35.43	31.61	37.00	39.83	30.78	35.98	33.00	35.44	56.83	28.95	28.15	34.12	28.69	53.64	37.00	36.45	31.60	30.03	28.82	30.96	31.71	37.60	34.70	34.89	34.30	34.83	+3.8%	Sep-18
2018m10	35.12	30.30	32.82	37.94	36.63	31.80	38.75	39.61	31.55	36.71	33.84	36.81	56.90	29.34	30.76	36.01	29.57	51.56	38.00	37.86	32.57	31.05	30.52	31.98	32.45	38.87	37.57	35.97	34.60	35.83	+3.1%	Oct-18
2018m11	35.69	30.43	33.54	37.93	37.16	32.29	39.04	39.25	32.33	36.73	33.69	37.08	57.82	29.65	31.66	36.75	30.29	51.55	37.25	38.68	32.85	31.84	31.62	32.38	32.92	38.74	37.21	36.21	34.80	36.07	+0.7%	Nov-18
2018m12	35.53	30.83	34.50	36.97	36.47	32.11	36.90	38.74	32.04	36.00	34.34	37.20	58.11	29.99	31.39	36.11	30.78	49.55	37.25	39.20	33.20	31.84	32.01	31.95	33.16	38.57	37.44	35.83	32.90	35.54	-1.0%	Dec-18
2019m01	33.86	30.94	34.66	34.16	35.47	31.71	34.28	38.88	32.04	36.12	33.96	39.51	58.07	30.21	30.61	34.96	31.08	48.22	36.25	38.25	32.48	31.09	31.46	32.56	33.26	38.60	35.96	35.31	32.51	35.04	-1.4%	Jan-19
2019m02	33.71	30.93	34.17	34.17	35.22	32.03	34.38	38.88	32.04	36.06	33.70	39.65	58.16	30.30	30.66	34.16	31.43	46.95	36.50	38.02	32.23	31.71	31.37	32.18	33.03	38.29	35.17	35.23	32.52	34.97	-0.2%	Feb-19
2019m03	33.59	30.76	34.21	34.17	34.82	31.57	32.63	38.29	31.65	35.03	33.33	39.32	57.89	30.34	30.56	34.44	31.48	46.71	36.50	37.64	32.39	30.55	31.04	32.27	32.78	37.94	35.04	34.79	32.76	34.60	-1.2%	Mar-19
2019m04	32.97	29.96	33.71	34.16	34.49	31.71	31.66	38.23	31.65	35.49	33.26	39.07	57.60	30.26	30.14	34.15	30.87	45.55	36.00	37.84	31.77	30.60	30.22	32.40	32.60	37.85	35.13	34.58	31.84	34.32	-0.6%	Apr-19
2019m05	32.48	29.72	33.42	34.15	33.99	31.08	31.47	37.86	31.55	35.47	33.28	39.09	57.13	29.35	30.49	33.59	30.34	45.74	35.25	37.45	31.49	30.25	30.22	32.10	32.61	37.41	34.00	34.24	31.09	33.94	-1.0%	May-19
2019m06	31.64	29.44	32.99	34.15	33.22	30.47	31.95	38.09	31.17	35.74	32.52	39.09	56.79	28.53	26.43	33.06	30.08	49.07	35.75	36.33	31.02	30.24	28.29	31.62	32.18	36.96	34.34	34.03	30.63	33.70	-0.6%	Jun-19
2019m07	31.12	29.66	32.83	34.16	32.93	30.34	31.08	37.93	31.07	35.92	32.44	39.16	57.01	28.44	26.21	32.69	29.83	50.55	35.00	35.97	30.78	30.17	28.43	31.74	31.99	37.62	34.02	33.83	30.82	33.54	-0.6%	Jul-19
2019m08	31.50	29.78	32.39	34.18	33.01	30.06	31.95	37.93	31.36	36.75	32.41	39.58	56.92	28.37	26.13	33.11	30.13	51.60	35.00	35.45	30.12	30.21	28.96	32.02	31.67	37.94	33.37	34.02	30.56	33.69	+0.6%	Aug-19
2019m09	32.69	30.20	32.56	34.03	33.88	30.30	34.48	38.72	31.65	37.83	32.95	39.69	57.41	28.41	27.52	34.23	30.24	52.12	35.00	35.97	30.41	30.55	29.77	32.65	32.26	38.69	34.30	34.70	31.82	34.43	+2.0%	Sep-19
2019m10	33.48	31.02	33.27	34.01	34.65	30.54	36.61	38.21	32.14	37.94	33.65	39.69	57.98	28.68	29.36	34.95	31.63	52.10	34.75	36.43	31.42	30.80	31.65	33.65	32.68	39.84	35.01	35.23	32.60	34.98	+1.5%	Oct-19
2019m11	34.15	31.54	33.95	33.99	35.19	30.89	37.29	38.48	33.01	37.77	34.06	39.23	58.33	29.70	30.21	35.78	31.99	53.78	35.50	36.95	32.85	30.83	32.68	34.05	33.03	39.74	35.46	35.65	33.80	35.47	+1.2%	Nov-19
2019m12	35.36	31.75	34.25	33.99	35.29	31.32	36.52	38.89	32.82	37.57	34.35	38.70	58.45	30.10	30.62	35.56	32.64	52.36	36.41	37.31	33.33	30.77	32.98	34.16	33.13	39.02	36.08	35.74	33.70	35.55	+0.3%	Dec-19
2020m01	34.33	31.96	34.58	33.99	34.92	31.30	34.67	38.82	32.62	37.12	34.44	37.49	58.57	30.21	30.84	35.24	32.55	49.47	36.50	36.30	32.76	30.85	32.48	33.68	33.23	38.81	35.21	35.27	32.94	35.05	-1.3%	Jan-20
2020m02	33.82	32.00	34.48	35.07	34.79	31.44	34.86	38.85	32.62	36.74	34.01	37.51	58.52	30.65	31.15	34.49	31.99	49.06	36.25	37.29	32.54	30.41	32.85	32.97	33.28	38.94	34.90	35.17	33.17	34.98	-0.3%	Feb-20
2020m03	31.90	32.00	32.43	35.07	34.88	31.42	31.66	38.77	32.33	36.14	33.29	36.61	58.17	30.72	31.09	34.90	31.08	48.88	35.00	37.20	31.17	30.40	32.33	32.63	33.21	38.98	34.90	34.47	31.11	34.14	-2.0%	Mar-20
2020m04	30.37	31.33	30.82	34.04	34.05	30.35	30.01	38.76	32.23	35.14	33.03	35.61	57.83	28.53	28.21	34.44	29.72	49.14	33.00	37.19	29.55	30.42	31.74	30.72	32.89	38.94	34.84	33.39	30.32	33.09	-3.1%	Apr-20
2020m05	29.81	31.20	29.87	34.06	32.52	28.42	30.59	38.48	31.94	35.45	32.89	36.06	57.51	25.60	25.37	33.59	29.37	48.99	32.50	36.39	29.40	30.04	29.89	30.00	32.08	38.71	34.52	32.93	29.32	32.58	-1.4%	May-20
2020m06	29.58	30.98	30.24	33.40	31.72	27.47	31.76	38.51	31.75	34.54	32.63	34.64	57.73	25.50	24.73	33.39	29.12	50.48	33.00	36.24	29.62	29.92	29.19	30.10	31.84	37.77	34.32	32.52	29.34	32.22	-1.2%	Jun-20
2020m07	29.56	30.94	30.26	33.44	31.83	27.71	32.83	38.48	31.55	35.38	32.49	34.64	56.82	26.48	25.49	32.96	28.59	50.18	34.00	36.24	29.84	29.64	29.70	30.16	31.62	37.51	33.87	32.85	29.76	32.56	+1.0%	Jul-20
2020m08	29.47	31.16	30.74	33.44	32.02	27.58	33.89	38.51	31.55	35.40	32.39	34.56	57.15	26.91	26.14	32.64	28.83	50.83	33.75	37.26	30.79	29.74	29.73	30.26	31.59	37.83	34.06	33.06	30.25	32.79	+0.6%	Aug-20
2020m09	30.56	31.16	30.49	33.86	33.25	28.36	36.61	38.56	31.17	36.71	32.84	34.98	56.73	27.55	28.13	33.76	28.52	51.57	34.25	38.32	31.38	30.24	30.05	30.97	31.75	39.06	35.02	33.97	30.92	33.68	+2.8%	Sep-20
2020m10	31.68	31.77	30.64	34.94	34.70	28.90	39.14	38.58	32.72	37.77	33.56	35.49	58.00	28.29	30.53	35.40	29.40	52.48	34.25	39.36	32.51	30.37	32.21	31.68	32.38	39.74	36.25	35.05	31.83	34.74	+3.2%	Oct-20
2020m11	31.89	32.14	31.99	34.92	35.05	29.50	39.14	38.64	33.11	36.87	33.99	35.82	58.50	28.89	31.52	35.92	30.27	51.89	35.19	40.07	34.51	30.57	32.50	32.30	32.39	39.89	37.88	35.40	33.07	35.18	+1.0%	Nov-20
2020m12	33.14	32.47	32.51	33.73	35.13	29.60	37.49	38.88	32.91	37.04	34.43	35.90	58.75	29.54	31.62	35.96	30.71	51.37	34.25	41.41	34.69	30.68	32.24	31.34	32.38	39.58	37.93	35.31	32.54	35.05	-0.2%	Dec-20
2021m01	30.30	32.47	32.73	33.74	35.13	29.70	37.20	38.80	32.91	36.05	34.18	35.90	58.75	29.17	30.97	35.27	30.60	51.37	35.19	39.70	33.95	30.68	33.86	31.33	31.50	39.40	38.27	35.04			-0.8%	Jan-21

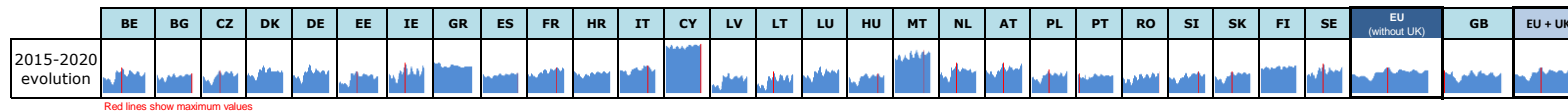
Estimations DG AGRI-G3

Estimations based on National statistics

"estimated" prices by MS (indicator of price movement, not to be relied upon to forecast prices)

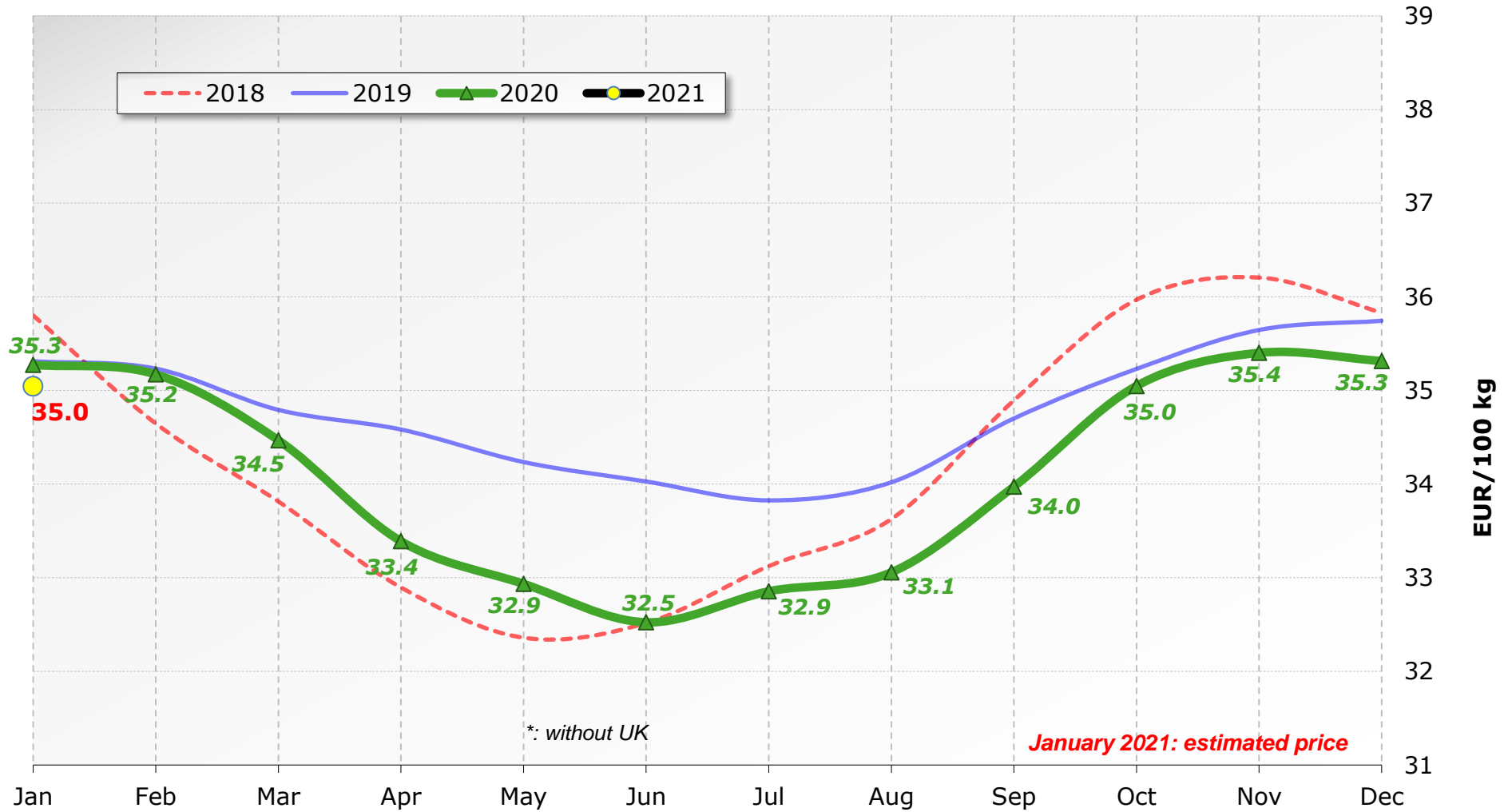
Price of Dec 20 compared to :

	BE	BG	CZ	DK	DE	EE	IE	GR	ES	FR	HR	IT	CY	LV	LT	LU	HU	MT	NL	AT	PL	PT	RO	SI	SK	FI	SE	EU (without UK)	GB	EU + UK
Nov 20	+3.9%	+1.0%	+1.6%	-3.4%	+0.2%	+0.3%	-4.2%	+0.6%	-0.6%	+0.5%	+1.3%	+0.2%	+0.4%	+2.2%	+0.3%	+0.1%	+1.4%	-1.0%	-2.7%	+3.3%	+0.5%	+0.4%	-0.8%	-3.0%	-0.0%	-0.8%	+0.1%	-0.2%	-1.6%	-0.4%
Dec 19	-6.3%	+2.3%	-5.1%	-0.8%	-0.5%	-5.5%	+2.7%	-0.0%	+0.3%	-1.4%	+0.2%	-7.2%	+0.5%	-1.9%	+3.3%	+1.1%	-5.9%	-1.9%	-5.9%	+11.0%	+4.1%	-0.3%	-2.2%	-8.3%	-2.3%	+1.4%	+5.1%	-1.2%	-3.4%	-1.4%



# Milk Prices paid to the Producers

## EU\* (weight. avg.)

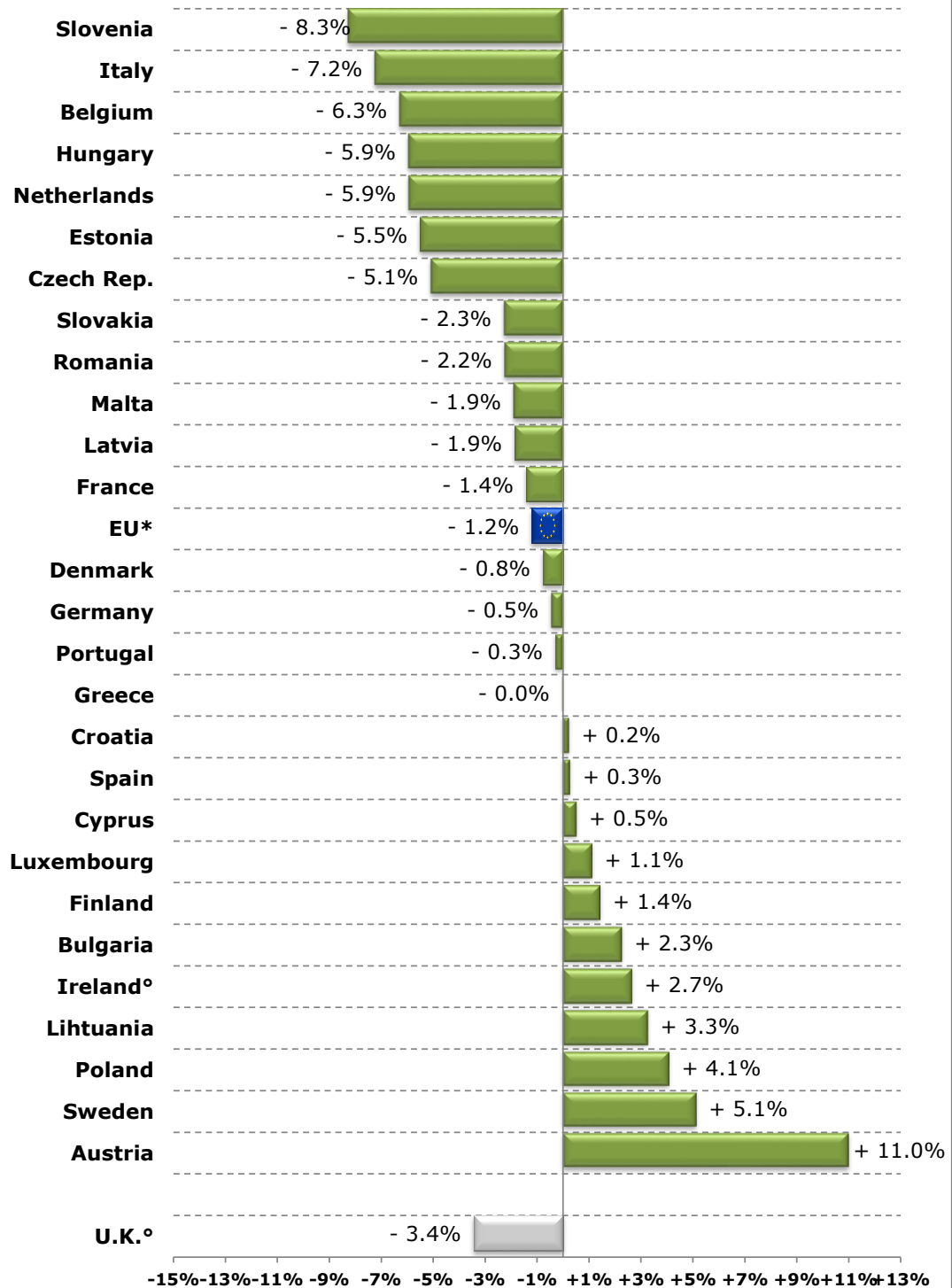


\*: without UK

January 2021: estimated price

Source : Member States Reg. (EU) No 2017/1185 Article 12(a) - Annex II.4(a)

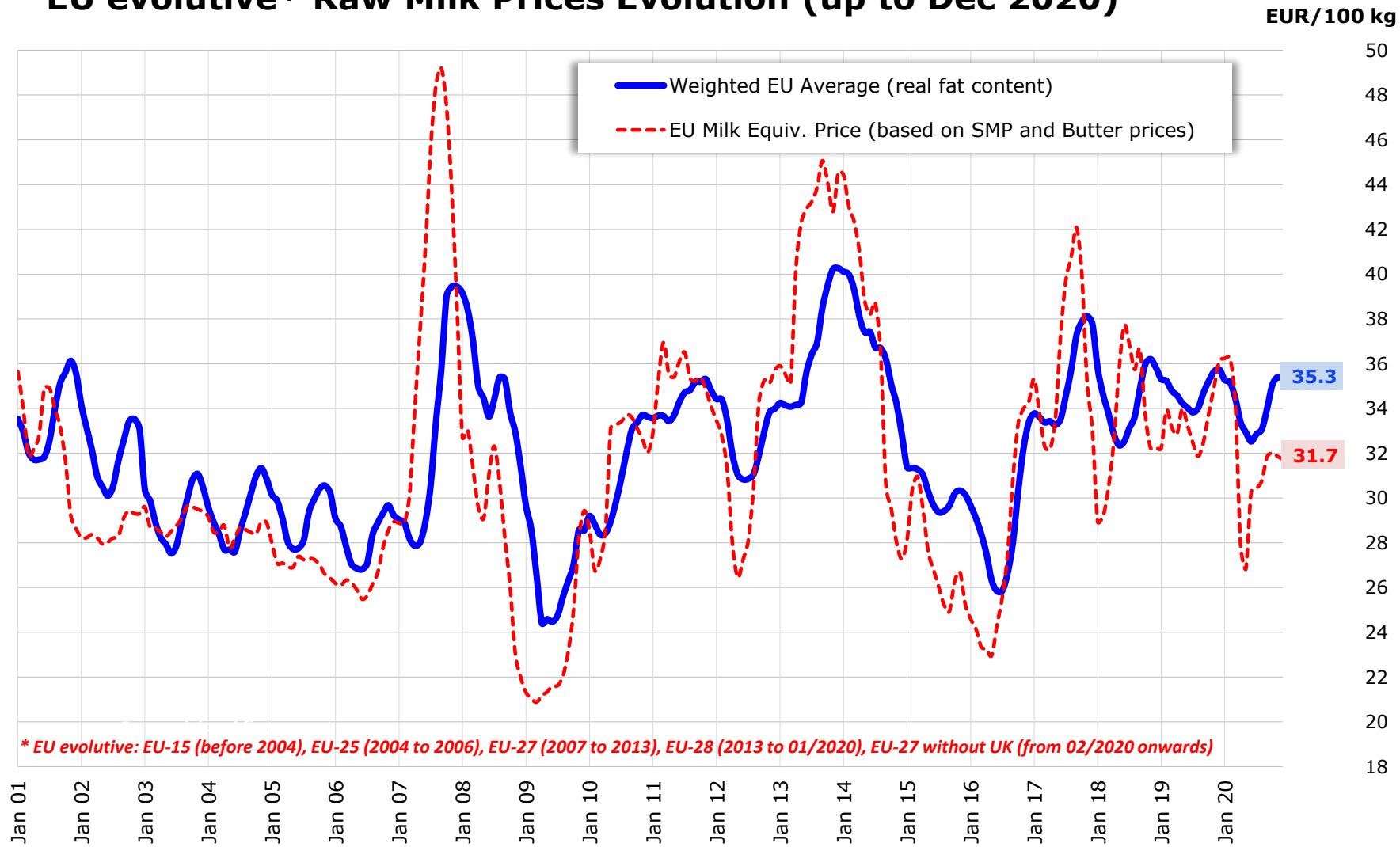
## Raw Milk Price evolution in December 2020 compared to December 2019



\*: without UK    ° : estimated figures for Dec 2020

Source : Member States (Reg. (EU) No 2017/1185 Article 12(a) - Annex II.4(a))

# EU evolutive\* Raw Milk Prices Evolution (up to Dec 2020)



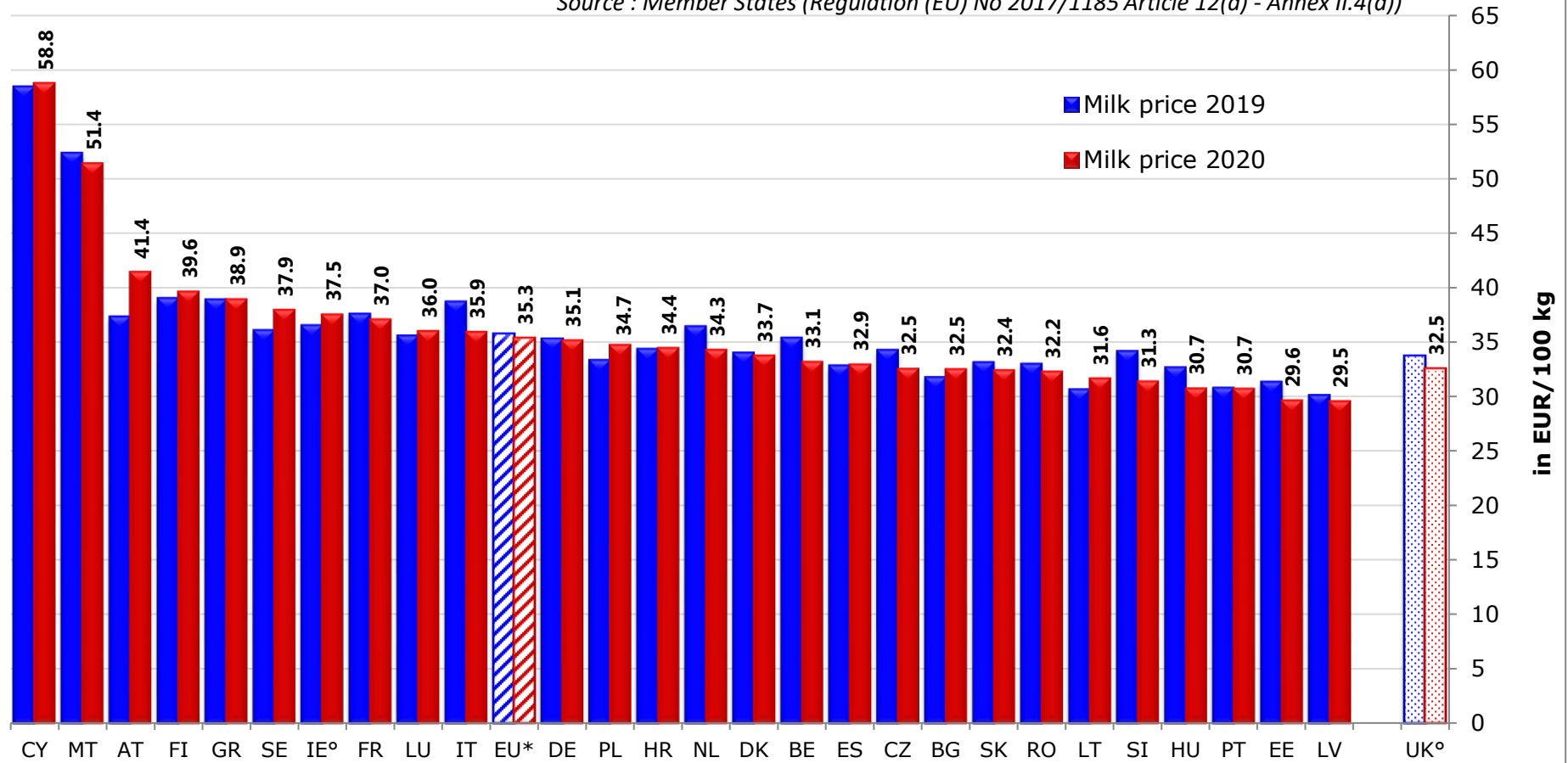
\* EU evolutive: EU-15 (before 2004), EU-25 (2004 to 2006), EU-27 (2007 to 2013), EU-28 (2013 to 01/2020), EU-27 without UK (from 02/2020 onwards)

Source : MS' communications under Reg. (EU) No 2017/1185 Article 12(a) - Annex II.4(a)

# EU\* MILK PRICES

( Dec 2020 vs Dec 2019 )

Source : Member States (Regulation (EU) No 2017/1185 Article 12(a) - Annex II.4(a))



\*: without UK

° : estimated figures for Nov 2020