



EU PRICES of COW'S RAW MILK in EURO/100 kg

Source: Regulation (EU) No 2017/1185 Article 12(a) - Annex II.4(a) (prices of raw milk at real fat and protein content paid to milk producers)

																												Weighted averages			% compared to previous month (*)		
	Belgium	Bulgaria	Czech Rep.	Denmark	Germany	Estonia	Ireland	Greece	Spain	France	Croatia	Italy	Cyprus	Latvia	Lithuania	Luxembourg	Hungary	Malta	Netherlands	Austria	Poland	Portugal	Romania	Slovenia	Slovakia	Finland	Sweden	U.K.	EU-15	EU-13			EU (weight. avg.)
2016m01	26.84	28.66	26.37	29.71	28.92	23.43	28.26	41.59	29.90	30.43	31.81	34.38	58.49	22.00	22.57	29.00	24.76	46.14	29.25	33.22	26.14	28.64	27.27	27.45	27.53	38.07	32.45	29.90	30.22	26.21	29.65	-3.1%	Jan-16
2016m02	25.81	28.17	25.49	29.75	28.13	23.20	27.58	40.63	29.71	30.10	29.86	34.09	57.52	21.42	21.42	28.37	24.56	44.12	29.25	31.73	25.60	28.00	26.92	26.65	26.87	37.83	31.03	28.82	29.65	25.58	29.08	-2.0%	Feb-16
2016m03	24.79	27.29	24.51	29.37	27.31	22.74	24.18	38.92	29.42	29.99	29.98	32.14	56.32	20.70	20.73	28.48	23.73	43.66	28.50	31.70	25.71	27.98	26.30	25.13	25.89	37.55	31.43	27.92	28.87	25.24	28.35	-2.5%	Mar-16
2016m04	24.08	25.72	23.56	28.48	25.74	21.92	24.08	38.00	28.93	29.39	29.10	31.49	54.74	19.49	19.38	27.59	22.55	42.94	27.50	30.78	24.43	28.01	24.78	23.64	24.72	37.46	31.17	26.48	27.92	24.01	27.36	-3.5%	Apr-16
2016m05	22.85	24.73	22.52	27.42	23.97	21.19	23.99	37.56	28.35	28.78	28.78	31.07	54.71	18.24	17.94	26.10	21.67	43.97	25.00	29.77	23.33	27.59	21.81	23.46	23.67	37.12	29.60	25.50	26.77	22.89	26.22	-4.2%	May-16
2016m06	22.26	24.60	22.02	26.22	23.18	20.24	23.50	37.35	27.96	28.68	28.16	30.63	55.00	17.78	16.91	25.04	21.02	45.03	25.00	29.26	23.12	27.40	21.62	23.16	23.17	36.64	27.96	24.59	26.24	22.51	25.71	-1.9%	Jun-16
2016m07	22.12	25.03	21.96	26.08	23.42	20.04	24.47	37.52	27.77	28.51	27.89	30.63	54.97	17.71	16.92	24.72	20.96	45.82	25.00	29.37	23.29	26.98	22.67	23.34	23.12	35.37	27.24	24.03	26.18	22.63	25.68	-0.1%	Jul-16
2016m08	24.67	25.88	22.34	26.21	24.30	20.75	27.00	37.89	28.16	29.41	28.37	30.47	54.85	18.64	17.86	25.07	22.07	46.30	25.00	29.90	24.95	26.84	23.59	24.15	23.39	35.64	28.35	24.36	26.86	23.82	26.43	+2.9%	Aug-16
2016m09	26.85	27.14	23.13	27.39	26.37	23.30	29.91	38.28	28.74	30.20	28.86	31.32	55.12	21.14	21.17	26.54	23.42	47.68	26.25	29.84	26.41	27.10	25.27	24.76	24.21	36.48	29.60	25.88	28.23	25.32	27.82	+5.2%	Sep-16
2016m10	30.46	28.91	24.36	29.43	30.42	26.39	32.83	38.64	29.71	31.59	30.13	31.32	56.16	24.89	25.88	29.13	25.28	48.92	29.25	31.43	28.30	27.38	27.90	26.09	25.78	37.40	31.66	26.35	30.34	27.43	29.93	+7.6%	Oct-16
2016m11	33.68	29.85	25.68	31.45	33.14	29.61	36.32	38.65	30.39	32.35	30.71	31.99	56.81	28.26	28.88	31.94	27.14	47.51	33.00	33.05	29.62	28.05	29.35	27.35	27.05	37.83	33.07	28.51	32.31	29.01	31.84	+6.4%	Nov-16
2016m12	35.97	30.66	27.02	33.48	33.67	32.34	35.06	38.80	30.39	32.72	31.30	34.34	57.33	30.41	29.91	33.97	28.39	46.46	37.50	34.70	30.67	29.26	30.46	28.18	28.29	37.55	34.79	30.14	33.53	30.18	33.06	+3.8%	Dec-16
2017m01	34.97	30.94	27.90	35.37	34.13	32.66	35.45	38.71	30.68	34.23	31.69	36.25	57.14	31.01	30.32	35.18	29.53	47.16	34.50	34.88	30.21	28.31	30.82	28.58	29.15	37.32	37.00	30.38	33.96	30.27	33.43	+1.1%	Jan-17
2017m02	34.10	30.95	28.79	36.45	33.97	32.55	34.18	37.37	30.68	33.26	31.85	36.43	56.28	30.00	29.71	34.57	29.78	45.59	35.00	34.88	30.57	28.32	30.16	28.55	29.52	37.19	37.90	31.25	33.86	30.46	33.38	-0.2%	Feb-17
2017m03	33.73	30.88	29.26	36.85	33.56	32.13	31.66	37.93	30.49	32.61	31.37	36.64	55.27	29.50	28.59	34.41	29.56	45.07	36.00	34.83	30.52	28.70	29.66	28.68	29.51	37.18	37.88	30.79	33.58	30.32	33.12	-0.8%	Mar-17
2017m04	33.44	30.00	29.88	35.76	33.49	31.06	31.66	37.96	30.39	33.61	31.06	36.32	55.12	29.23	27.73	33.81	29.62	44.87	36.00	34.58	30.66	28.72	28.79	28.66	29.79	37.10	36.70	30.82	33.64	30.30	33.17	+0.2%	Apr-17
2017m05	32.95	29.33	30.42	34.68	33.83	30.76	32.63	37.90	30.29	32.43	30.87	36.62	54.42	28.82	26.79	32.98	29.50	44.81	36.00	34.68	30.95	28.60	26.90	28.47	29.86	36.85	35.34	30.44	33.42	30.29	32.97	-0.6%	May-17
2017m06	33.19	28.98	31.02	34.82	34.38	31.55	33.60	38.02	30.10	32.32	30.54	36.62	54.67	29.15	26.64	32.86	29.51	45.17	36.75	35.82	31.25	28.74	26.28	28.97	29.99	36.67	34.54	29.64	33.57	30.51	33.13	+0.5%	Jun-17
2017m07	34.32	29.31	31.54	36.58	35.89	32.78	34.96	38.02	30.10	34.04	30.67	36.78	55.30	29.81	27.74	33.63	29.88	46.73	37.25	36.76	31.61	28.47	26.66	29.85	30.49	37.41	36.59	30.45	34.69	31.00	34.16	+3.1%	Jul-17
2017m08	36.06	29.84	32.08	37.51	37.44	32.94	37.68	38.00	30.68	35.11	29.95	37.15	55.96	30.05	28.65	35.02	30.47	50.85	38.50	37.70	32.57	29.85	26.91	30.56	30.91	37.57	37.78	31.61	35.89	31.72	35.30	+3.3%	Aug-17
2017m09	37.70	30.60	33.08	38.44	39.39	33.97	38.25	39.34	31.26	36.60	30.84	37.70	56.58	31.79	31.49	37.27	31.17	53.35	40.50	39.74	33.71	30.77	29.46	32.38	31.97	38.14	40.10	32.68	37.32	33.01	36.71	+4.0%	Sep-17
2017m10	36.10	30.90	33.99	39.23	39.39	33.97	38.25	39.50	31.26	35.52	33.30	37.70	56.58	32.04	33.46	38.34	31.04	53.35	41.75	40.60	34.02	30.77	30.07	33.51	31.58	38.35	40.51	32.68	37.25	33.52	36.72	+0.0%	Oct-17

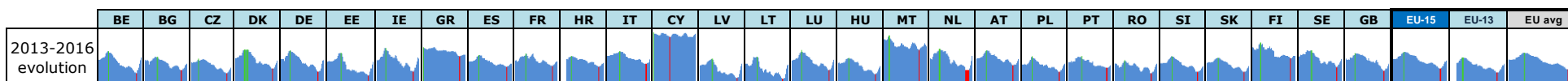
Yellow box: Estimations DG AGRI-G3

Orange box: Estimations based on LTO / national statistics

Grey box: "estimated" prices by MS (indicator of price movement, not to be relied upon to forecast prices)

Price of Sep 17 compared to :

	BE	BG	CZ	DK	DE	EE	IE	GR	ES	FR	HR	IT	CY	LV	LT	LU	HU	MT	NL	AT	PL	PT	RO	SI	SK	FI	SE	GB	EU-15	EU-13	EU avg
Aug 17	+4.5%	+2.5%	+3.1%	+2.5%	+5.2%	+3.1%	+1.5%	+3.5%	+1.9%	+4.2%	+3.0%	+1.5%	+1.1%	+5.8%	+9.9%	+6.4%	+2.3%	+4.9%	+5.2%	+5.4%	+3.5%	+3.1%	+9.5%	+6.0%	+3.4%	+1.5%	+6.1%	+3.4%	+4.0%	+4.1%	+4.0%
Sep 16	+40%	+13%	+43%	+40%	+49%	+46%	+28%	+3%	+9%	+21%	+7%	+20%	+3%	+50%	+49%	+40%	+33%	+12%	+54%	+33%	+28%	+14%	+17%	+31%	+32%	+5%	+35%	+26%	+32%	+30%	+32%

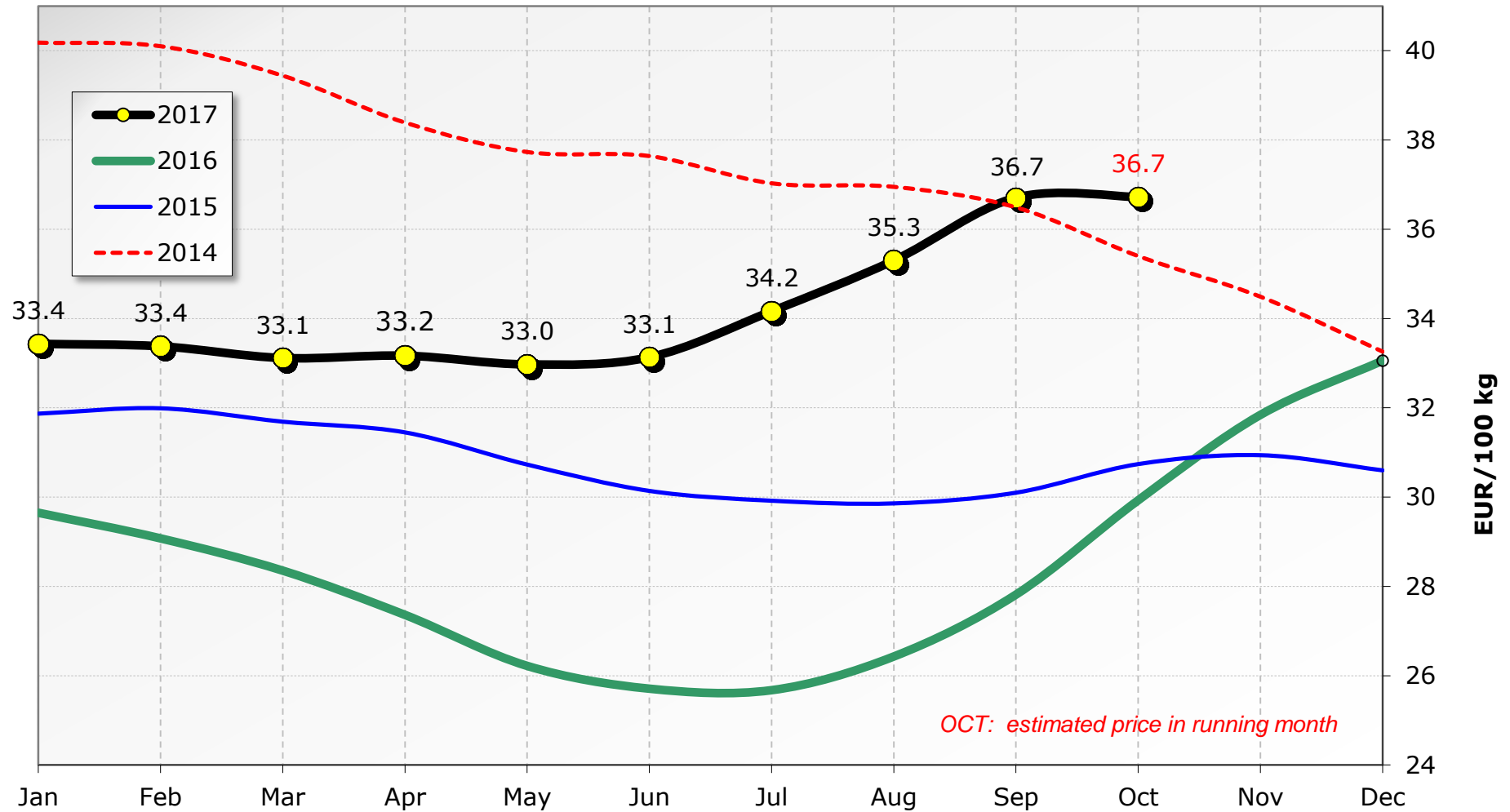


Red lines show maximum values

	BE	BG	CZ	DK	DE	EE	IE	GR	ES	FR	HR	IT	CY	LV	LT	LU	HU	MT	NL	AT	PL	PT	RO	SI	SK	FI	SE	GB	EU-15	EU-13	EU avg
Max since Jan 2013	41.9 Dec 13	37.0 Mar 14	35.1 Oct 13	43.5 Nov 13	42.5 Nov 13	40.3 Mar 14	44.9 Nov 13	45.5 Jan 13	38.3 Dec 13	39.8 Jan 14	37.8 Dec 13	41.8 Mar 14	58.9 Jan 13	35.2 Mar 14	37.0 Feb 14	42.9 Dec 13	35.7 Jan 14	56.1 Jul 13	44.0 Nov 13	42.7 Dec 13	37.2 Dec 13	37.8 Apr 14	33.8 Dec 13	37.3 Feb 14	36.0 Feb 14	49.5 Oct 13	42.5 Mar 14	40.0 Nov 13	41.0 Nov 13	36.4 Dec 13	40.3 Dec 13
Min since Jan 2013	22.1 Jul 16	24.6 Jun 16	22.0 Jul 16	26.1 Jul 16	23.2 Jun 16	20.0 Jul 16	23.5 Jun 16	37.4 Jun 16	27.8 Jul 16	28.5 Jul 16	27.9 Jul 16	30.5 Aug 16	54.4 May 17	17.7 Jul 16	16.9 Jun 16	24.7 Jul 16	21.0 Jul 16	42.9 Apr 16	25.0 May 16	29.3 Jun 16	23.1 Jun 16	26.8 Aug 16	21.6 Jun 16	23.2 Jun 16	23.1 Jul 16	35.4 Jul 16	27.2 Jul 16	24.0 Jul 16	26.2 Jul 16	22.5 Jun 16	25.7 Jul 16

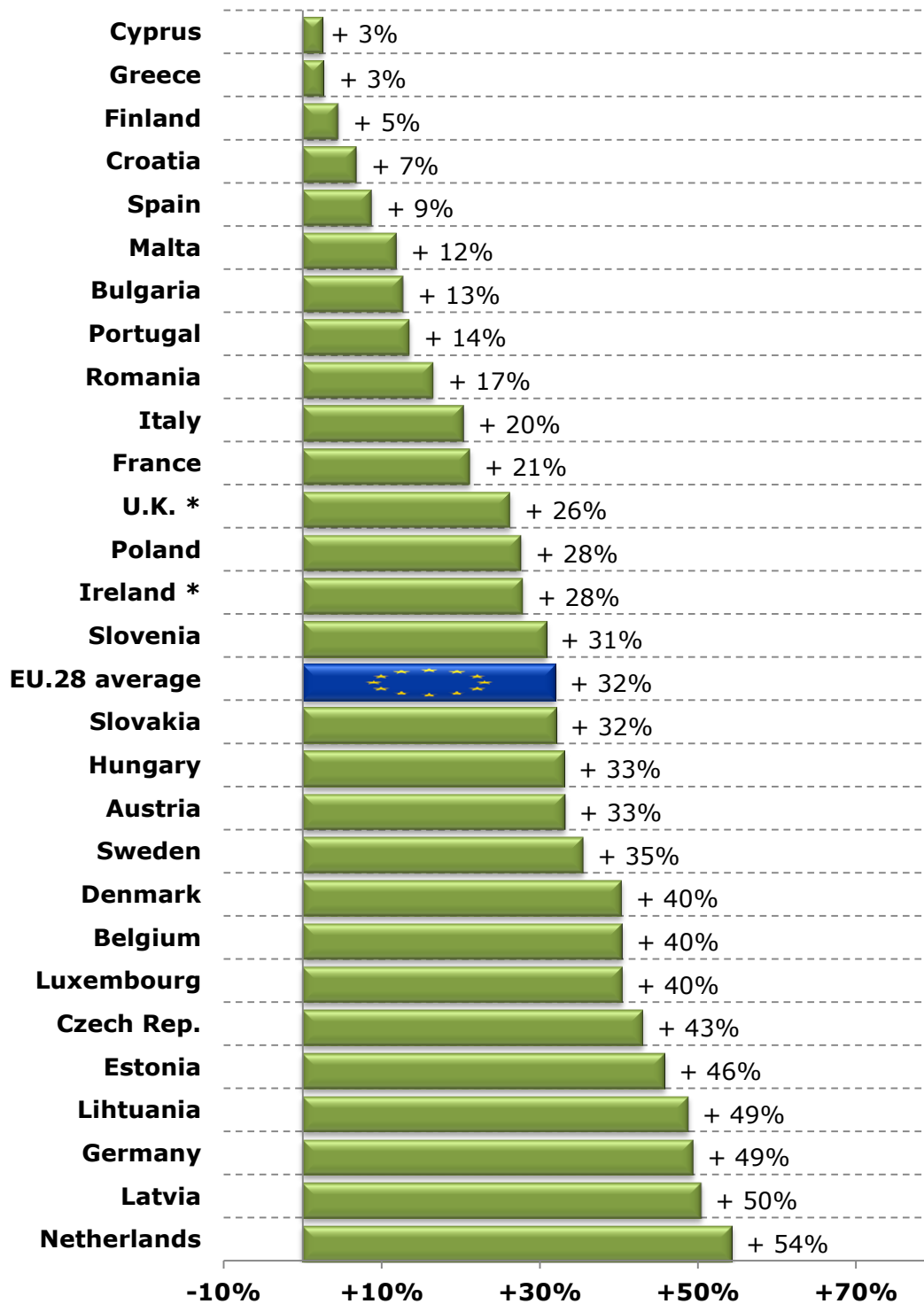
Milk Prices paid to the Producers

EU (weight. avg.)



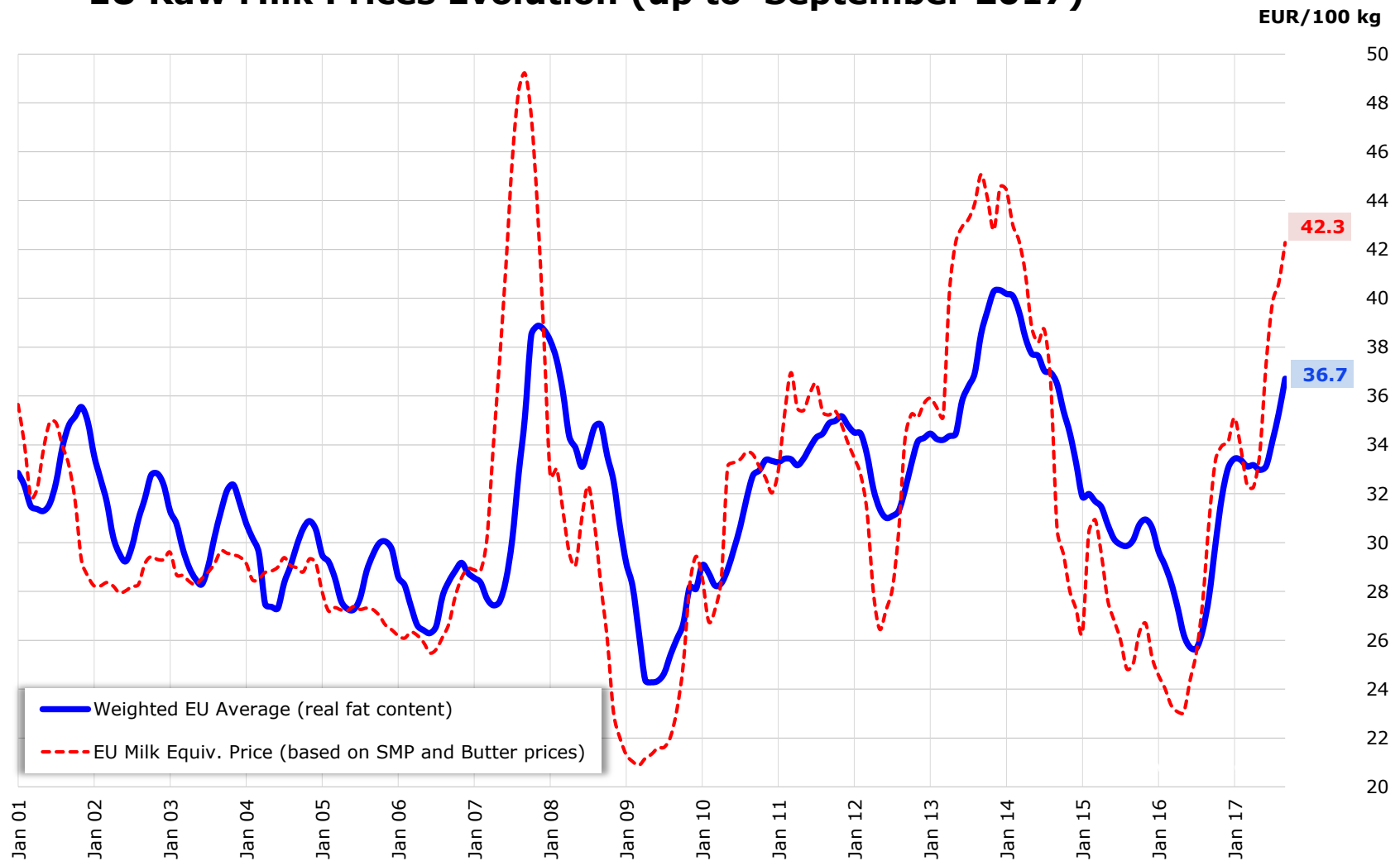
Source : Member States Reg. (EU) No 2017/1185 Article 12(a) - Annex II.4(a)

Raw Milk Price evolution in September 2017 compared to September 2016



Source : Member States (Reg. (EU) No 2017/1185 Article 12(a) - Annex II.4(a))

EU Raw Milk Prices Evolution (up to September 2017)



Source : MS' communications under Reg. (EU) No 2017/1185 Article 12(a) - Annex II.4(a)

EU MILK PRICES

(Sep 2017 vs Sep 2016)

Source : Member States (Regulation (EU) No 2017/1185 Article 12(a) - Annex II.4(a))

