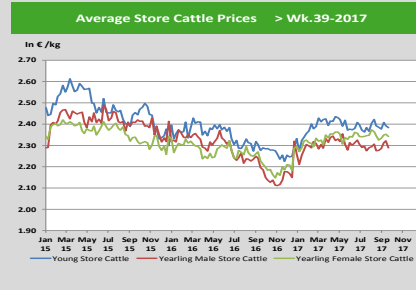
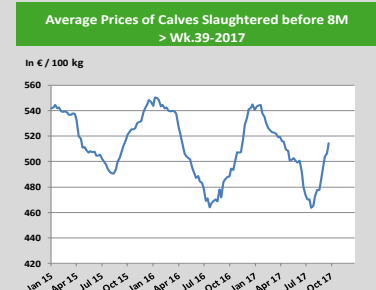
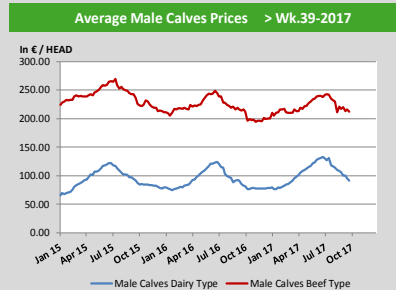
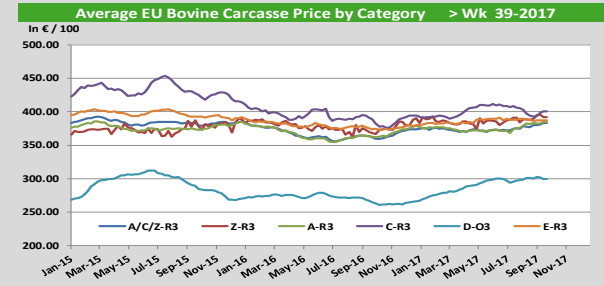
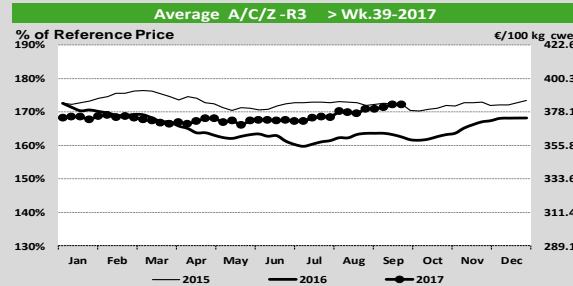


Prices

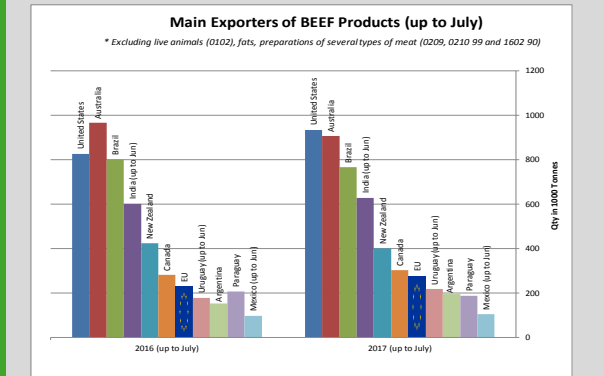
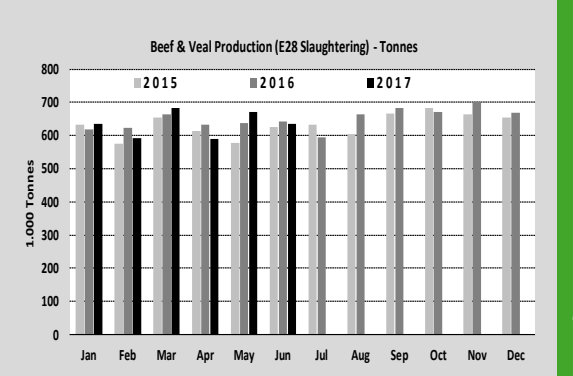
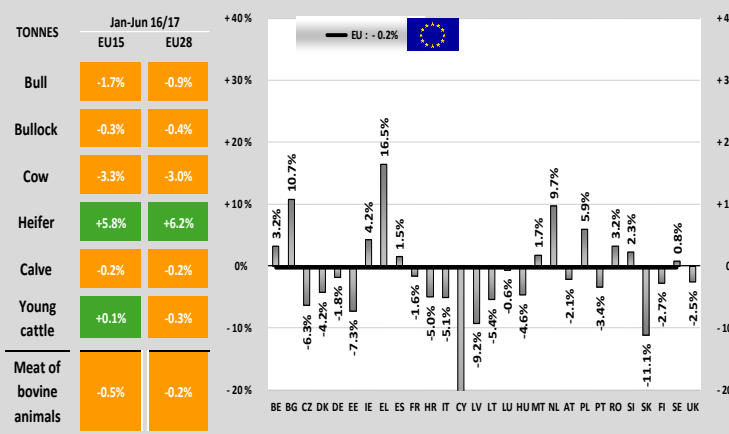
Carcasse

Live Animals

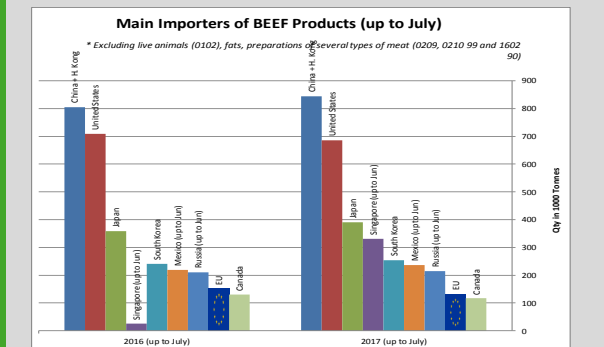
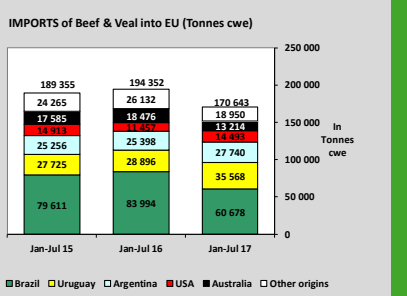
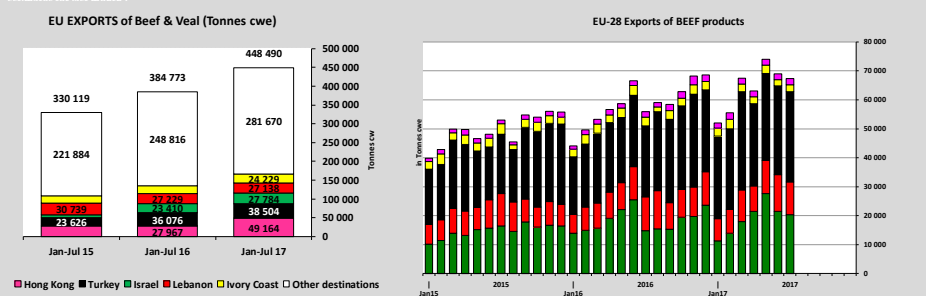
EU Prices week	39	Evolution since last week	Evolution since last month	Evolution since last year
Average A/C/Z -R3	383.1	+ 0.4%	+ 0.8%	+ 6.0%
Young Bovines (Z)	392.2	- 0.6%	+ 0.6%	- 0.6%
Young Bulls (A)	381.9	+ 0.6%	+ 0.1%	+ 6.5%
Steers (C)	404.3	- 0.2%	+ 1.9%	+ 2.8%
Cows (D)	299.3	- 0.3%	- 0.4%	+ 13.2%
Heifers (E)	386.9	- 0.1%	+ 0.1%	+ 3.4%
Male Calves Dairy Type	91.65	- 3.9%	- 13.6%	+ 10.4%
Male Calves Beef Type	212.6	- 1.8%	- 2.0%	- 1.8%
Young Store Cattle	2.38	- 0.4%	- 0.1%	+ 4.1%
Yearling Male Store Cattle	2.29	- 1.4%	+ 0.6%	+ 4.7%
Yearling Female Store Cattle	2.34	- 0.4%	+ 0.7%	+ 5.9%
Calves slaughtered <8M	514.2	+ 1.5%	+ 6.0%	+ 5.4%



Production



Trade

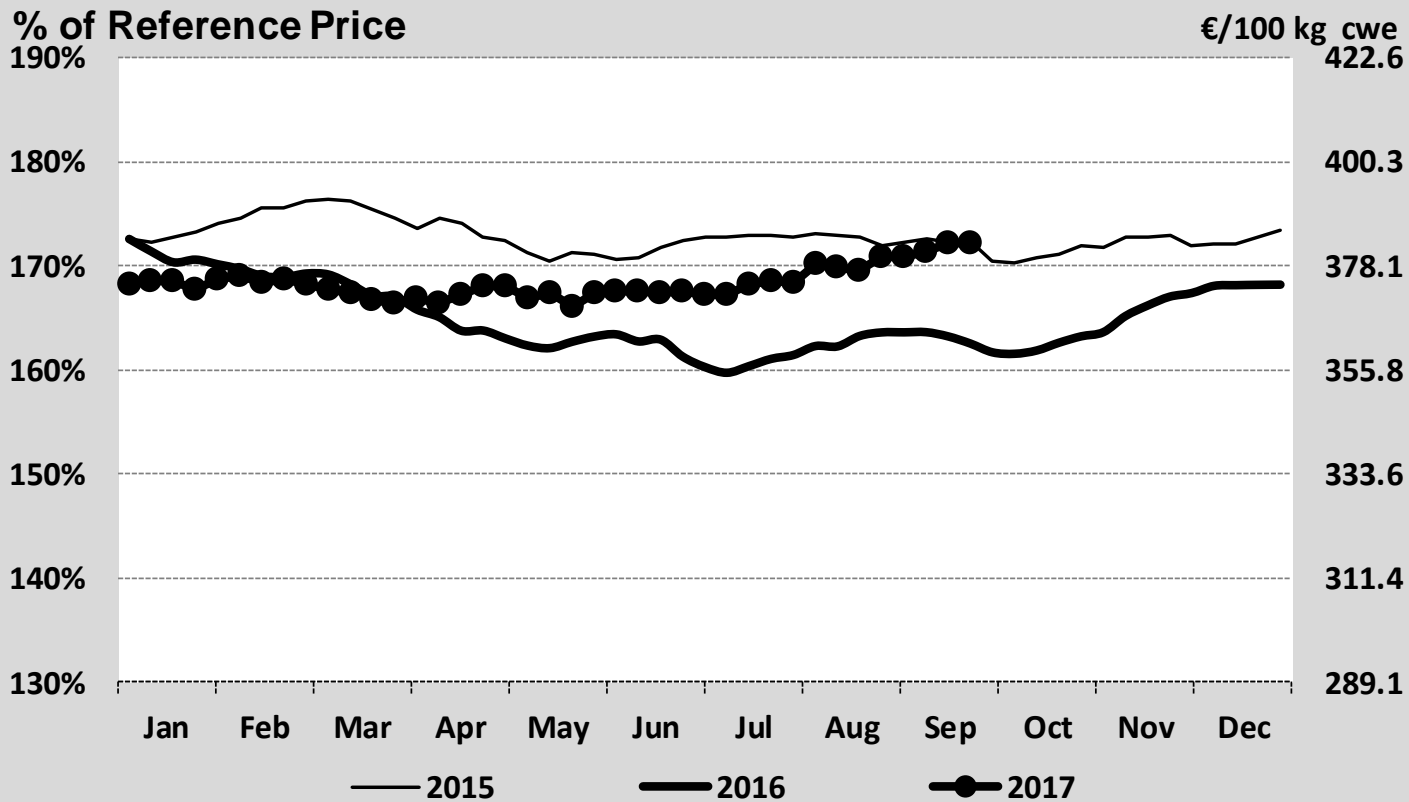


World Trade

EU Prices week		39	Evolution since last week	Evolution since last month	Evolution since last year
Carcasse	Average A/C/Z -R3	383.1	+ 0.4%	+ 0.8%	+ 6.0%
	Young Bovines (Z)	392.2	- 0.6%	+ 0.6%	- 0.6%
	Young Bulls (A)	381.9	+ 0.6%	+ 0.1%	+ 6.5%
	Steers (C)	404.3	- 0.2%	+ 1.9%	+ 2.8%
	Cows (D)	299.3	- 0.3%	- 0.4%	+ 13.2%
	Heifers (E)	386.9	- 0.1%	+ 0.1%	+ 3.4%
Live Animals	Male Calves Dairy Type	91.65	- 3.9%	- 13.6%	+ 10.4%
	Male Calves Beef Type	212.6	- 1.8%	- 2.0%	- 1.8%
	Young Store Cattle	2.38	- 0.4%	- 0.1%	+ 4.1%
	Yearling Male Store Cattle	2.29	- 1.4%	+ 0.6%	+ 4.7%
	Yearling Female Store Cattle	2.34	- 0.4%	+ 0.7%	+ 5.9%
	Calves slaughtered <8M	514.2	+ 1.5%	+ 6.0%	+ 5.4%

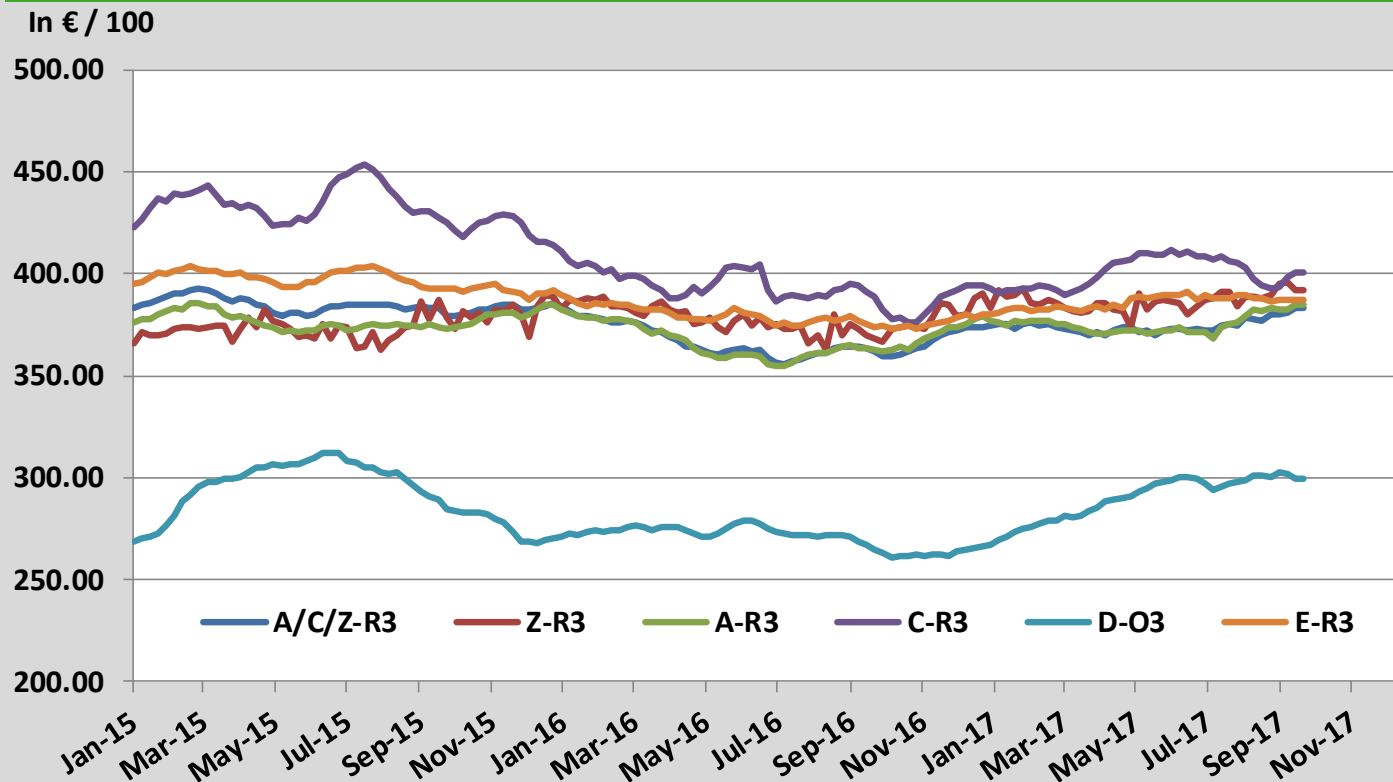
Sources : MSs notifications (Regulation (EC) 1249/2008 and 807/2013)

Average A/C/Z -R3 > Wk.39-2017



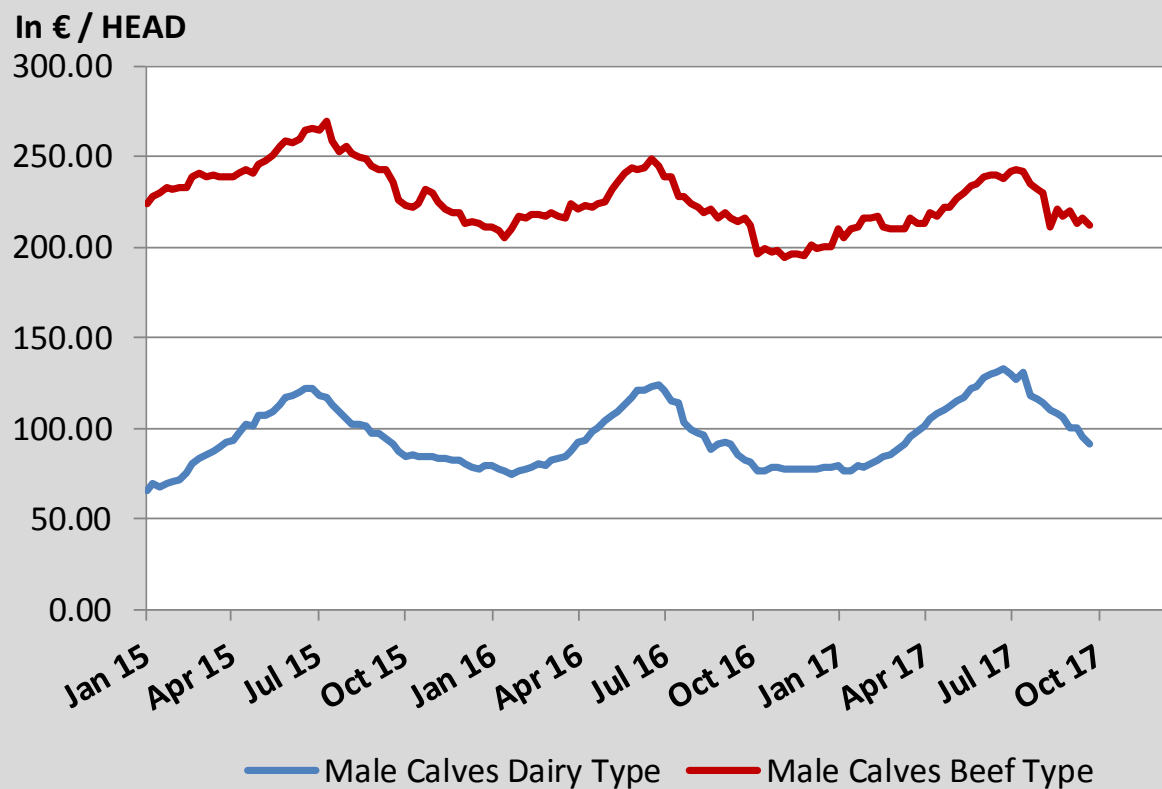
Source : MSs notifications (Regulation (EC) 1249/2008)

Average EU Bovine Carcasse Price by Category > Wk 39-2017



Source : MSs notifications (Regulation (EC) 1249/2008)

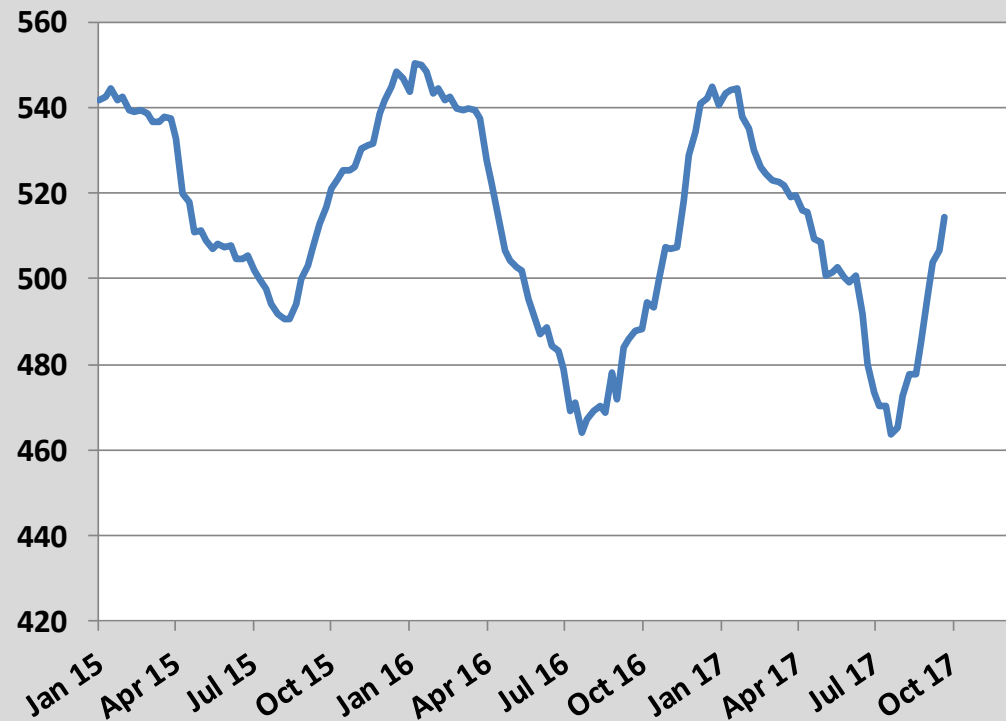
Average Male Calves Prices > Wk.39-2017



Source : MSs notifications (Regulation (EC) 807/2013)

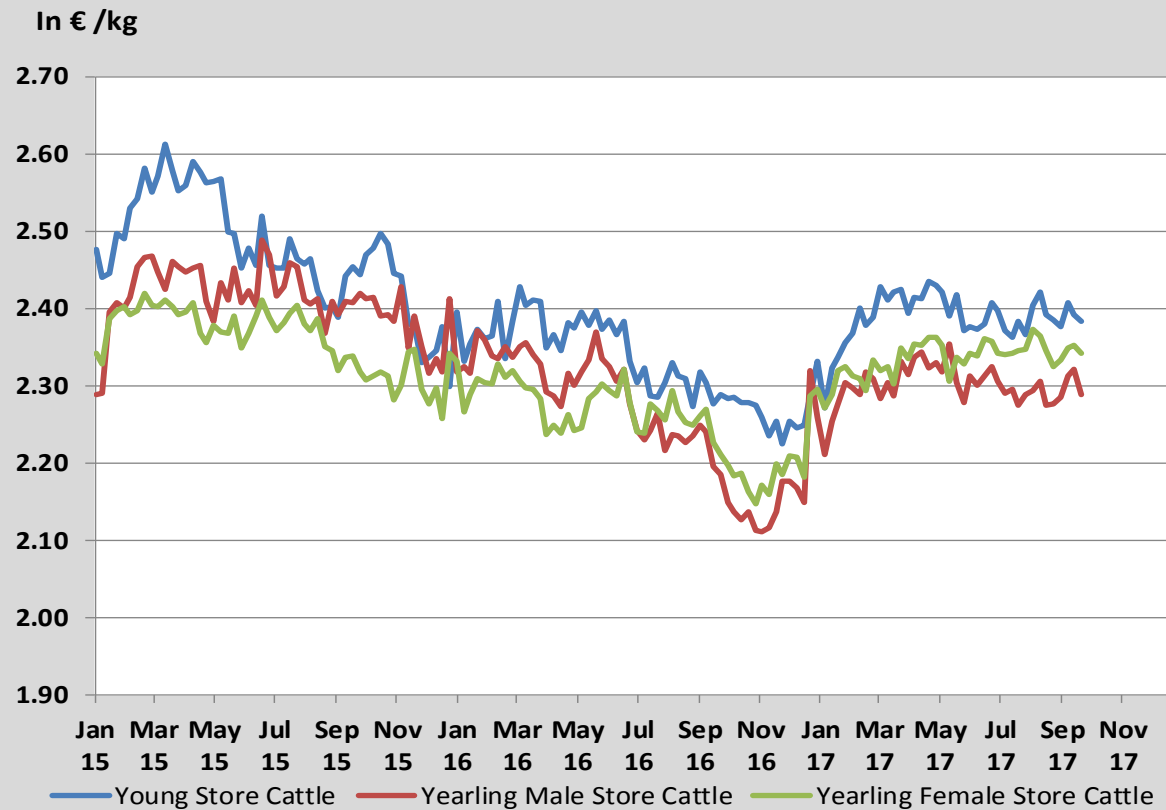
Average Prices of Calves Slaughtered before 8M > Wk.39-2017

In € / 100 kg



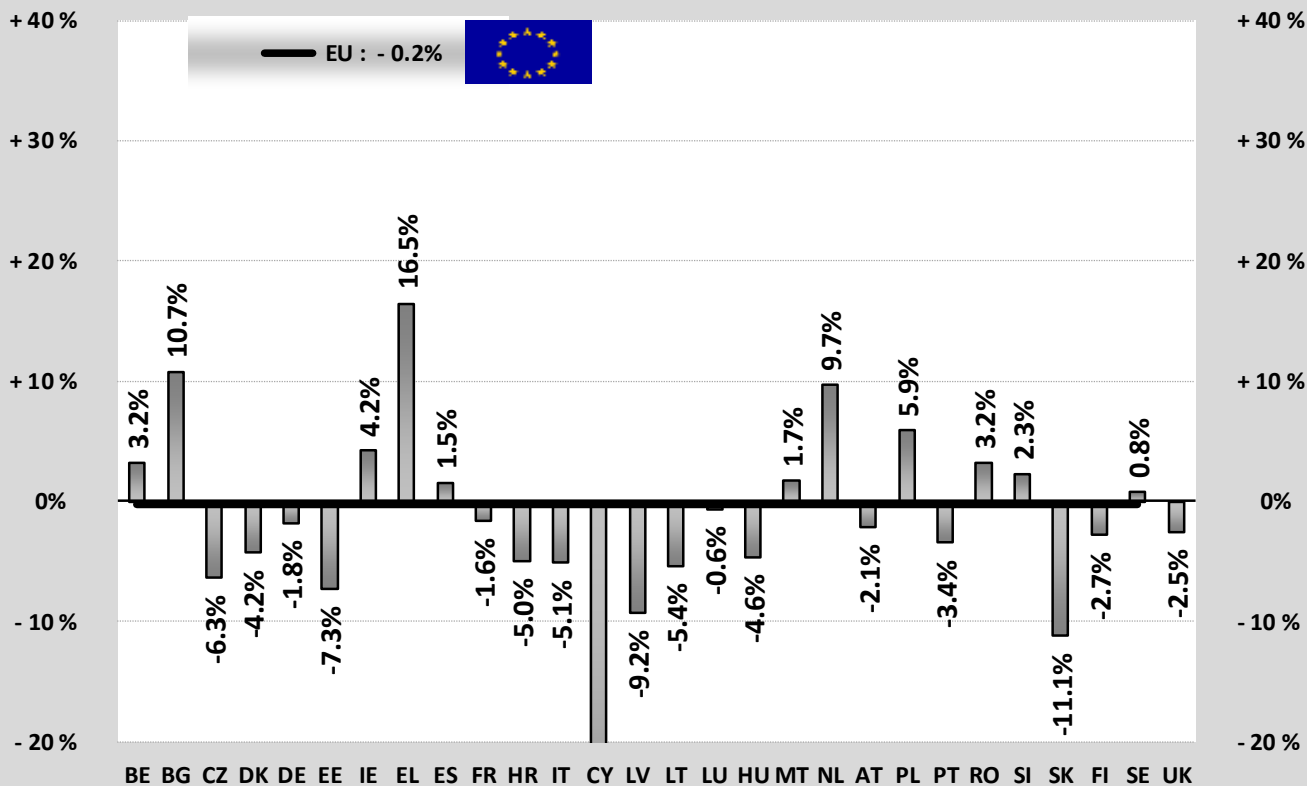
Source : MSs notifications (Regulation (EC) 807/2013)

Average Store Cattle Prices > Wk.39-2017



Source : MSs notifications (Regulation (EC) 807/2013)

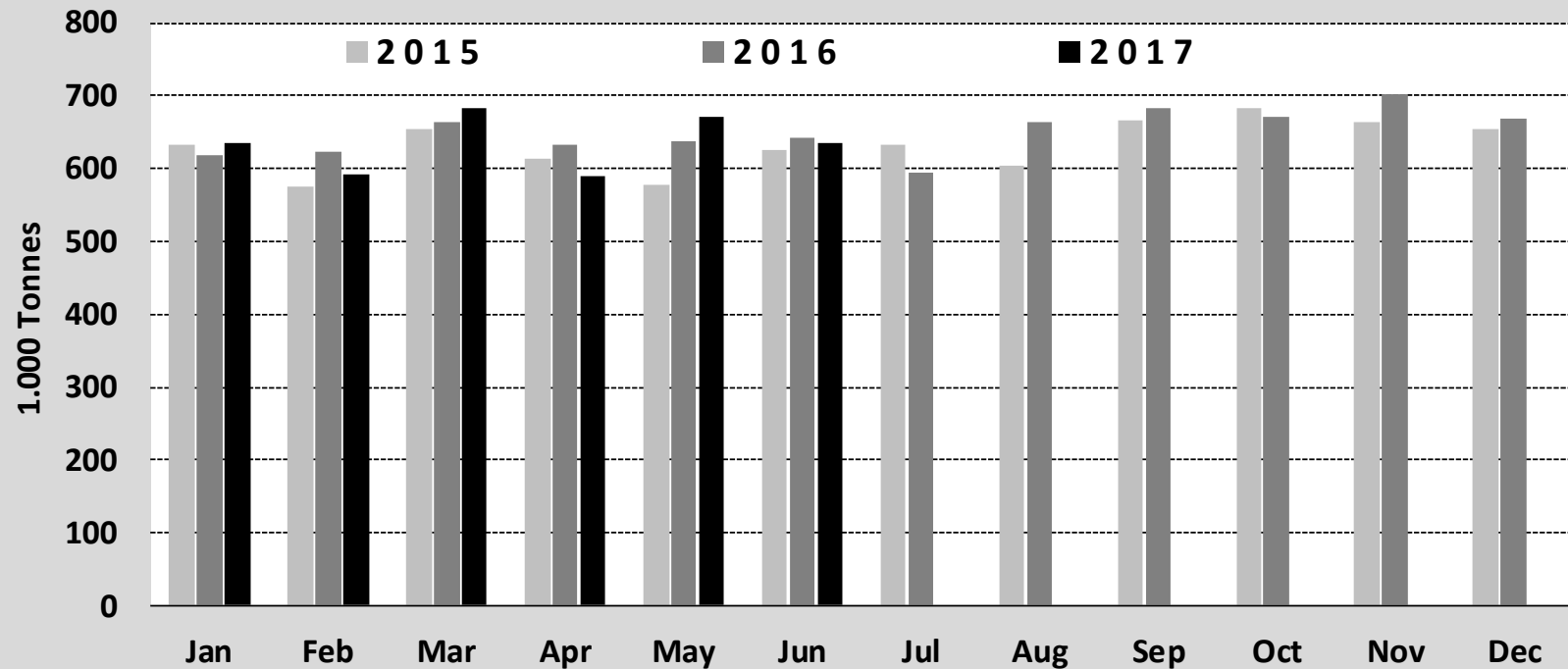
TONNES	Jan-Jun 16/17	
	EU15	EU28
Bull	-1.7%	-0.9%
Bullock	-0.3%	-0.4%
Cow	-3.3%	-3.0%
Heifer	+5.8%	+6.2%
Calve	-0.2%	-0.2%
Young cattle	+0.1%	-0.3%
Meat of bovine animals	-0.5%	-0.2%



Estimates for last month :

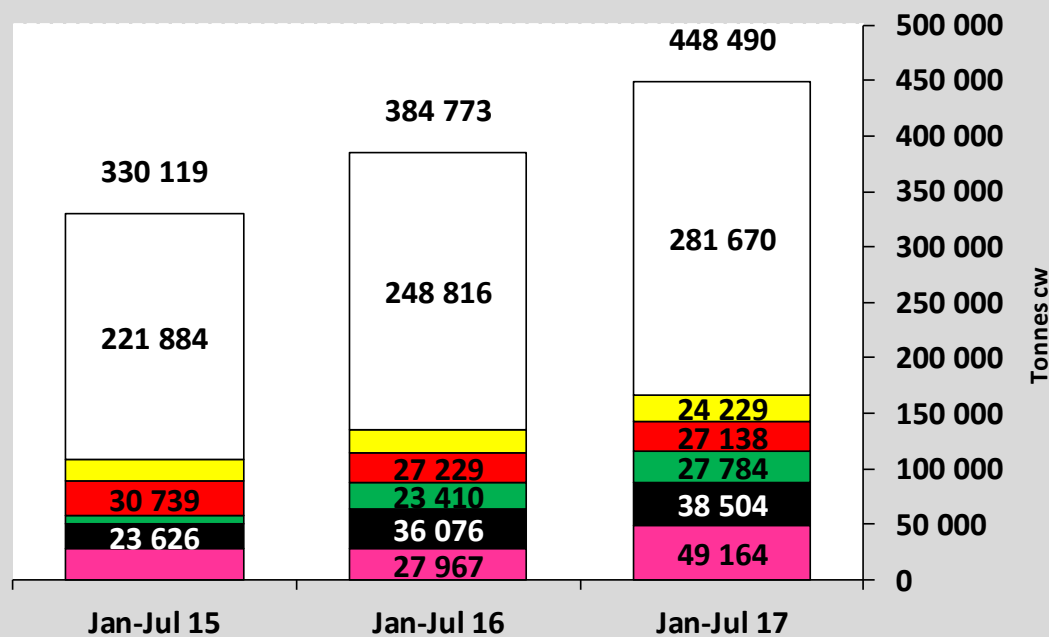
Source : Eurostat

Beef & Veal Production (E28 Slaughtering) - Tonnes



Source : Eurostat

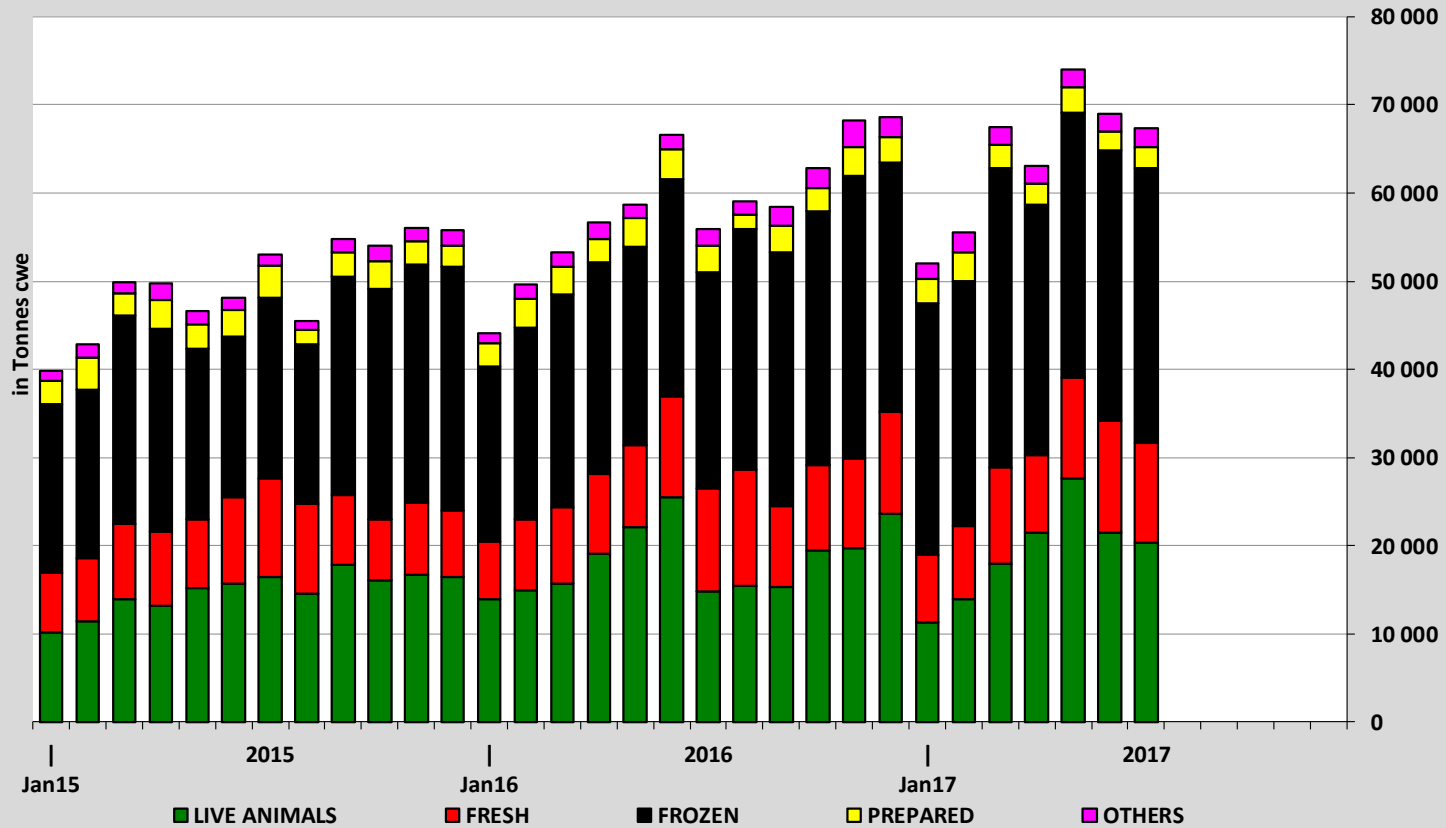
EU EXPORTS of Beef & Veal (Tonnes cwe)



■ Hong Kong
 ■ Turkey
 ■ Israel
 ■ Lebanon
 ■ Ivory Coast
 ■ Other destinations

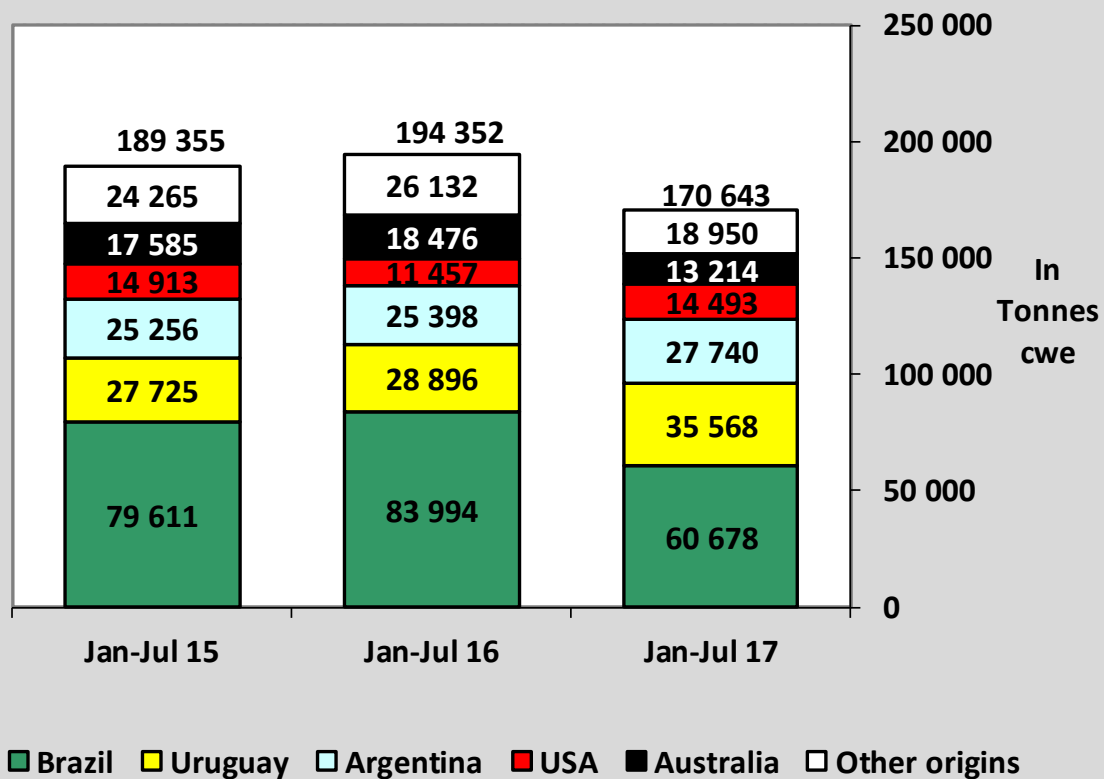
Source : Eurostat - Comext

EU-28 Exports of BEEF products



Source : Eurostat - Comext

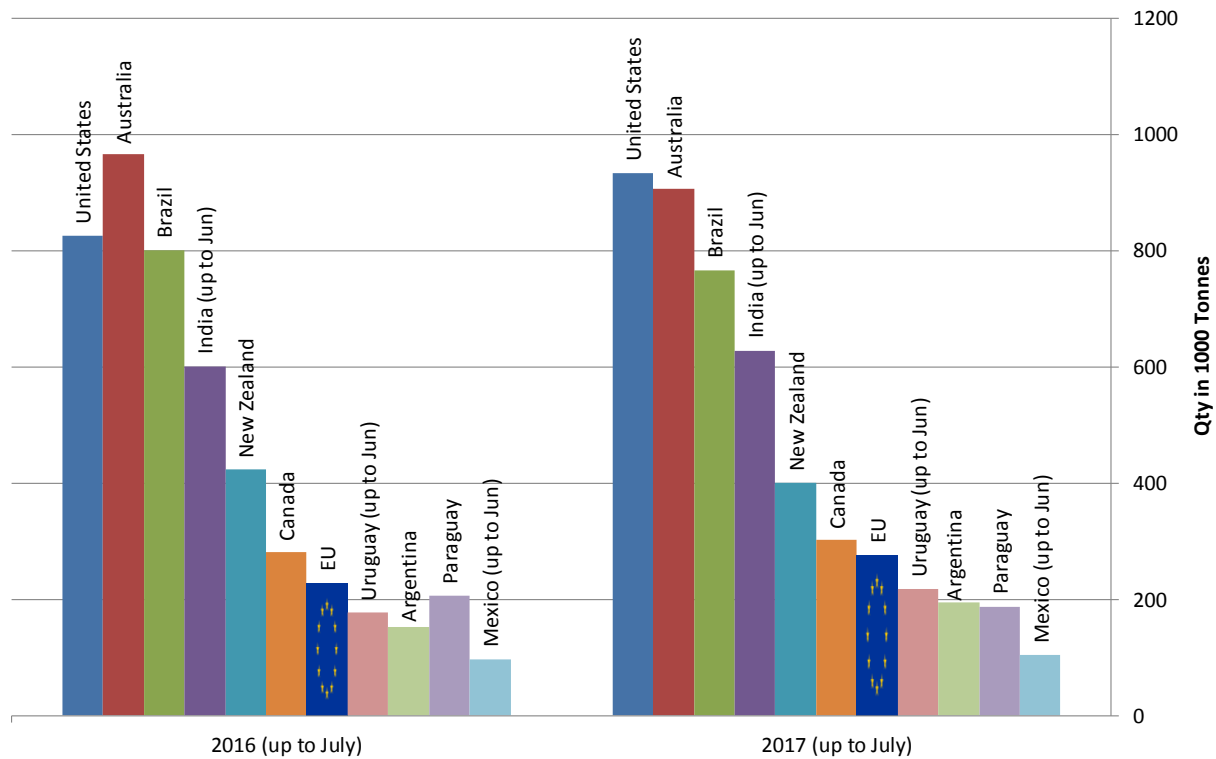
IMPORTS of Beef & Veal into EU (Tonnes cwe)



Source : Eurostat - Comext

Main Exporters of BEEF Products (up to July)

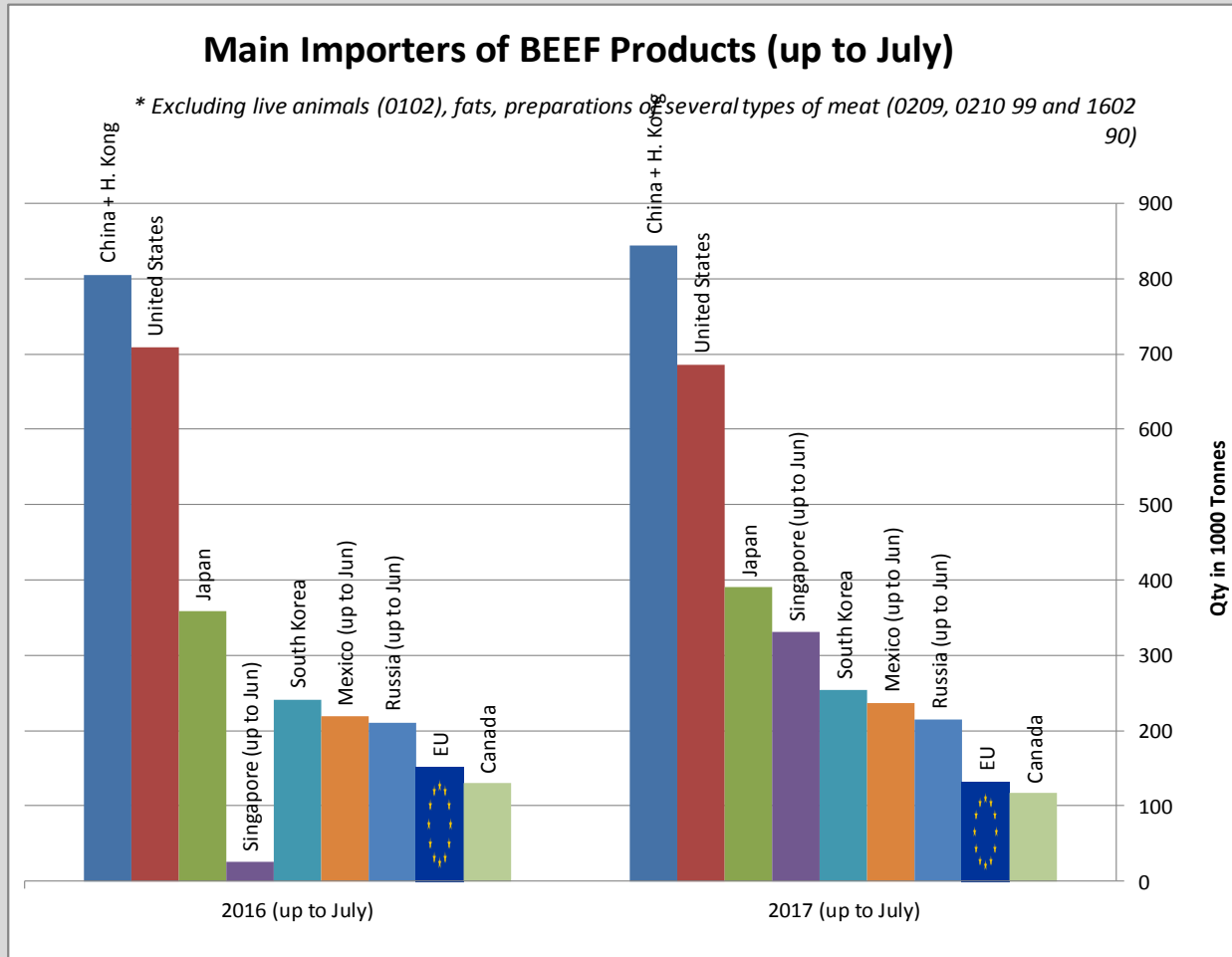
* Excluding live animals (0102), fats, preparations of several types of meat (0209, 0210 99 and 1602 90)



Sources : Global Trade Information Services, Inc. and Eurostat - Comext

Main Importers of BEEF Products (up to July)

* Excluding live animals (0102), fats, preparations of several types of meat (0209, 0210 99 and 1602 90)



Sources : Global Trade Information Services, Inc. and Eurostat - Comext