



EU PRICES of COW's RAW MILK in EURO/100 kg

Source: Regulation (EU) No 2017/1185 Article 12(a) - Annex II.4(a) (prices of raw milk at real fat and protein content paid to milk producers)

	Member States																										Weighted averages						
	Belgium	Bulgaria	Czech Rep.	Denmark	Germany	Estonia	Ireland	Greece	Spain	France	Croatia	Italy	Cyprus	Latvia	Lithuania	Luxembourg	Hungary	Malta	Netherlands	Austria	Poland	Portugal	Romania	Slovenia	Slovakia	Finland	Sweden	U.K.	EU-15	EU-13	EU (weight. avg.)	% compared to previous month (*)	
2015m07	26.70	26.19	25.87	30.90	27.94	23.89	27.10	41.54	28.83	32.18	30.78	34.49	55.81	21.04	19.95	28.02	23.90	46.49	30.00	31.77	26.96	28.10	23.64	27.25	26.43	36.29	30.71	32.87	30.58	25.98	29.92	-0.7%	Jul-15
2015m08	27.21	27.22	25.32	29.92	27.77	22.36	27.97	41.58	29.03	33.77	31.05	34.24	54.97	20.40	19.08	28.48	24.03	48.20	28.50	32.04	26.54	28.18	24.21	27.36	26.25	36.80	29.76	31.66	30.56	25.63	29.86	-0.2%	Aug-15
2015m09	27.35	27.85	25.42	29.93	28.38	22.60	29.23	41.80	29.51	33.78	31.68	33.76	55.47	20.35	20.12	29.55	24.23	49.60	28.50	32.87	26.56	28.60	25.27	28.02	26.63	37.71	30.88	31.37	30.80	25.86	30.10	+0.8%	Sep-15
2015m10	28.27	28.44	26.01	30.58	29.43	22.87	31.08	41.86	30.00	32.99	32.04	33.93	56.45	20.97	22.06	30.75	24.99	49.34	29.00	34.12	27.31	28.65	26.96	28.52	27.08	38.06	32.73	33.05	31.41	26.67	30.74	+2.1%	Oct-15
2015m11	28.14	28.75	26.40	30.59	29.81	23.56	30.98	41.93	30.10	32.27	32.19	34.07	57.55	21.78	22.84	30.69	25.21	49.26	29.75	34.38	27.41	28.63	27.80	28.65	27.41	38.70	32.83	34.20	31.60	26.96	30.94	+0.7%	Nov-15
2015m12	27.41	28.85	26.70	30.69	29.75	23.44	29.43	41.36	30.10	31.74	31.92	34.75	58.13	21.96	22.14	30.33	25.02	47.95	30.00	34.45	27.39	28.71	27.01	28.33	27.43	38.51	32.98	31.99	31.21	26.88	30.60	-1.1%	Dec-15
2016m01	26.84	28.66	26.37	29.71	28.92	23.43	28.26	41.59	29.90	30.43	31.81	34.38	58.49	22.00	22.57	29.20	24.76	46.14	29.25	33.22	26.14	28.64	27.27	27.45	27.53	38.07	32.45	29.90	30.22	26.21	29.65	-3.1%	Jan-16
2016m02	25.81	28.17	25.49	28.69	28.13	23.20	27.58	40.63	29.71	30.10	29.86	34.09	57.52	21.42	21.42	28.37	24.56	44.12	29.25	31.73	25.60	28.00	26.92	26.65	26.87	37.83	31.03	28.82	29.61	25.58	29.04	-2.1%	Feb-16
2016m03	24.79	27.29	24.51	29.37	27.31	22.74	24.18	38.92	29.42	29.99	29.98	32.14	56.32	20.70	20.73	28.48	23.73	43.66	28.50	31.70	25.71	27.98	26.30	25.13	25.89	37.55	31.43	27.92	28.87	25.24	28.35	-2.4%	Mar-16
2016m04	24.08	25.72	23.56	28.48	25.74	21.92	24.08	38.00	28.93	29.39	29.10	31.49	54.74	19.49	19.38	27.59	22.55	42.94	27.50	30.78	24.43	28.01	24.78	23.64	24.72	37.46	31.17	26.48	27.92	24.01	27.36	-3.5%	Apr-16
2016m05	22.85	24.73	22.52	27.42	23.97	21.19	23.99	37.56	28.35	28.78	28.78	31.07	54.71	18.24	17.94	26.10	21.67	43.97	25.00	29.77	23.33	27.59	21.81	23.46	23.67	37.12	29.60	25.50	26.77	22.89	26.22	-4.2%	May-16
2016m06	22.26	24.60	22.02	26.22	23.18	20.24	23.50	37.35	27.96	28.68	28.16	30.63	55.00	17.78	16.91	25.04	21.02	45.03	25.00	29.26	23.12	27.40	21.62	23.16	23.17	36.64	27.96	24.59	26.24	22.51	25.71	-1.9%	Jun-16
2016m07	22.12	25.03	21.96	26.08	23.42	20.04	24.47	37.52	27.77	28.51	27.89	30.63	54.97	17.71	16.92	24.72	20.96	45.82	25.00	29.37	23.29	26.98	22.67	23.34	23.12	35.37	27.24	24.03	26.18	22.63	25.68	-0.1%	Jul-16
2016m08	24.67	25.88	22.34	26.21	24.30	20.75	27.00	37.89	28.16	29.41	28.37	30.47	54.85	18.64	17.86	25.07	22.07	46.30	25.00	29.90	24.95	26.84	23.59	24.15	23.39	35.64	28.35	24.36	26.86	23.82	26.43	+2.9%	Aug-16
2016m09	26.85	27.14	23.13	27.39	26.37	23.30	29.91	38.28	28.74	30.20	28.86	31.32	55.12	21.14	21.17	26.54	23.42	47.68	26.25	29.84	26.41	27.10	25.27	24.76	24.21	36.48	29.60	25.88	28.23	25.32	27.82	+5.2%	Sep-16
2016m10	30.46	28.91	24.36	29.43	30.42	26.39	32.83	38.64	29.71	31.59	30.13	31.32	56.16	24.89	25.88	29.13	25.28	48.92	29.25	31.43	28.30	27.38	27.90	26.09	25.78	37.40	31.66	26.35	30.34	27.43	29.93	+7.6%	Oct-16
2016m11	33.68	29.85	25.68	31.52	33.14	29.61	36.32	38.65	30.39	32.35	30.71	31.99	56.81	28.26	28.88	31.94	27.14	47.51	33.00	33.05	29.62	28.05	29.35	27.35	27.05	37.83	33.07	28.51	32.31	29.01	31.84	+6.4%	Nov-16
2016m12	35.97	30.66	27.02	33.63	33.67	32.34	35.06	38.80	30.39	32.72	31.30	34.34	57.33	30.41	29.91	33.97	28.39	46.46	37.50	34.70	30.67	29.26	30.46	28.18	28.29	37.55	34.79	30.14	33.54	30.18	33.06	+3.8%	Dec-16
2017m01	34.97	30.94	27.90	35.37	34.13	32.66	35.45	38.71	30.68	34.23	31.69	36.25	57.14	31.01	30.32	35.18	29.53	47.16	34.50	34.88	30.21	28.31	30.82	28.58	29.15	37.32	37.00	30.38	33.96	30.27	33.43	+1.1%	Jan-17
2017m02	34.10	30.95	28.79	36.45	33.97	32.55	34.18	37.37	30.68	33.26	31.85	36.43	56.28	30.00	29.71	34.57	29.78	45.59	35.00	34.88	30.57	28.32	30.16	28.55	29.52	37.19	37.90	31.25	33.86	30.46	33.38	-0.2%	Feb-17
2017m03	33.73	30.88	29.26	36.85	33.56	32.13	31.66	37.93	30.49	32.61	31.37	36.64	55.27	29.50	28.59	34.41	29.56	45.07	36.00	34.83	30.52	28.70	29.66	28.68	29.51	37.18	37.88	30.79	33.58	30.32	33.12	-0.8%	Mar-17
2017m04	33.44	30.00	29.88	35.76	33.49	31.06	31.66	37.96	30.39	33.61	31.06	36.32	55.12	29.23	27.73	33.81	29.62	44.81	36.00	34.58	30.66	28.72	28.79	28.66	29.79	37.10	36.70	30.82	33.64	30.30	33.17	+0.2%	Apr-17
2017m05	32.95	29.33	30.42	34.68	33.83	30.76	32.63	37.90	30.29	32.43	30.87	36.62	54.42	28.82	26.79	32.98	29.50	45.17	36.00	34.68	30.95	28.60	26.90	28.47	29.86	36.96	35.34	30.44	33.42	30.29	32.97	-0.6%	May-17
2017m06	33.19	28.98	31.02	34.35	34.38	31.55	33.60	38.02	30.10	32.32	30.54	36.78	54.67	29.15	26.64	32.86	29.51	45.17	36.75	35.82	31.25	28.74	26.28	28.97	29.99	36.79	34.64	29.64	33.57	30.51	33.13	+0.5%	Jun-17
2017m07	34.66	29.31	31.53	35.11	34.38	32.00	34.34	38.00	30.10	34.58	30.68	37.59	55.30	29.81	27.74	33.38	29.88	46.16	37.25	36.76	31.63	28.74	27.36	29.85	30.49	37.52	37.18	29.66	34.34	31.02	33.87	+2.2%	Jul-17
2017m08	34.50	29.85	31.58								31.45		55.30	30.08	28.00		30.05		38.50	37.50	31.74				32.42	30.15	37.38						Aug-17

Yellow box: Estimations DG AGRI-C3

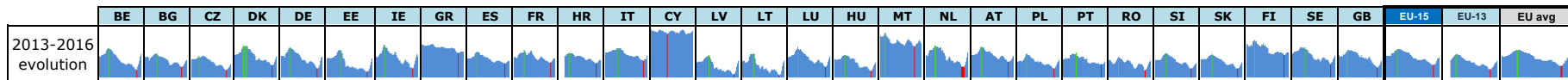
Orange box: Estimations based on LTO / national statistics

Grey box: "estimated" prices by MS (indicator of price movement, not to be relied upon to forecast prices)

Price of Jun 17 compared to :

	BE	BG	CZ	DK	DE	EE	IE	GR	ES	FR	HR	IT	CY	LV	LT	LU	HU	MT	NL	AT	PL	PT	RO	SI	SK	FI	SE	GB	EU-15	EU-13	EU avg
May 17	+0.7%	-1.2%	+2.0%	-0.9%	+1.6%	+2.6%	+3.0%	+0.3%	-0.6%	-0.3%	-1.1%	+0.4%	+0.5%	+1.1%	-0.6%	-0.4%	+0.0%	idem	+2.1%	+3.3%	+1.0%	+0.5%	-2.3%	+1.8%	+0.4%	-0.5%	-2.0%	-2.6%	+0.4%	+0.7%	+0.5%
Jun 16	+49%	+18%	+41%	+31%	+48%	+56%	+43%	+2%	+8%	+13%	+8%	+20%	-1%	+64%	+58%	+31%	+40%	+0%	+47%	+22%	+35%	+5%	+22%	+25%	+29%	+0%	+24%	+21%	+28%	+36%	+29%

-0.069



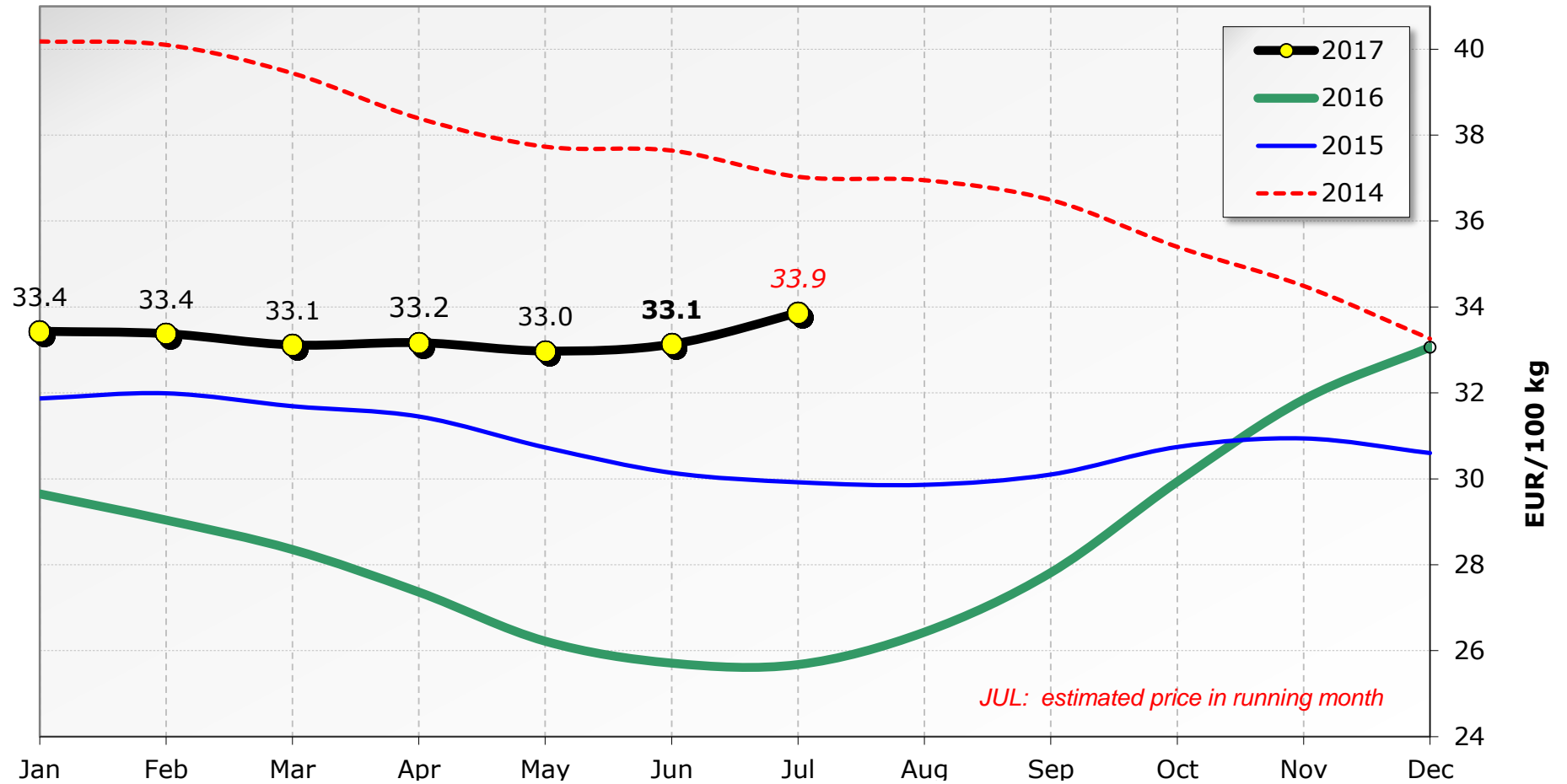
Red lines show maximum values

Max since	41.9	37.0	35.1	43.5	42.5	40.3	44.9	45.5	38.3	39.8	37.8	41.8	58.9	35.2	37.0	42.9	35.7	56.1	44.0	42.7	37.2	37.8	33.8	37.3	36.0	49.5	42.5	40.0	41.0	36.4	40.3
Jan 2013	Dec 13	Mar 14	Oct 13	Nov 13	Nov 13	Mar 14	Nov 13	Jan 13	Dec 13	Jan 14	Dec 13	Mar 14	Jan 13	Mar 14	Feb 14	Dec 13	Jan 14	Jul 13	Nov 13	Dec 13	Dec 13	Apr 14	Dec 13	Feb 14	Feb 14	Oct 13	Mar 14	Nov 13	Nov 13	Dec 13	Dec 13

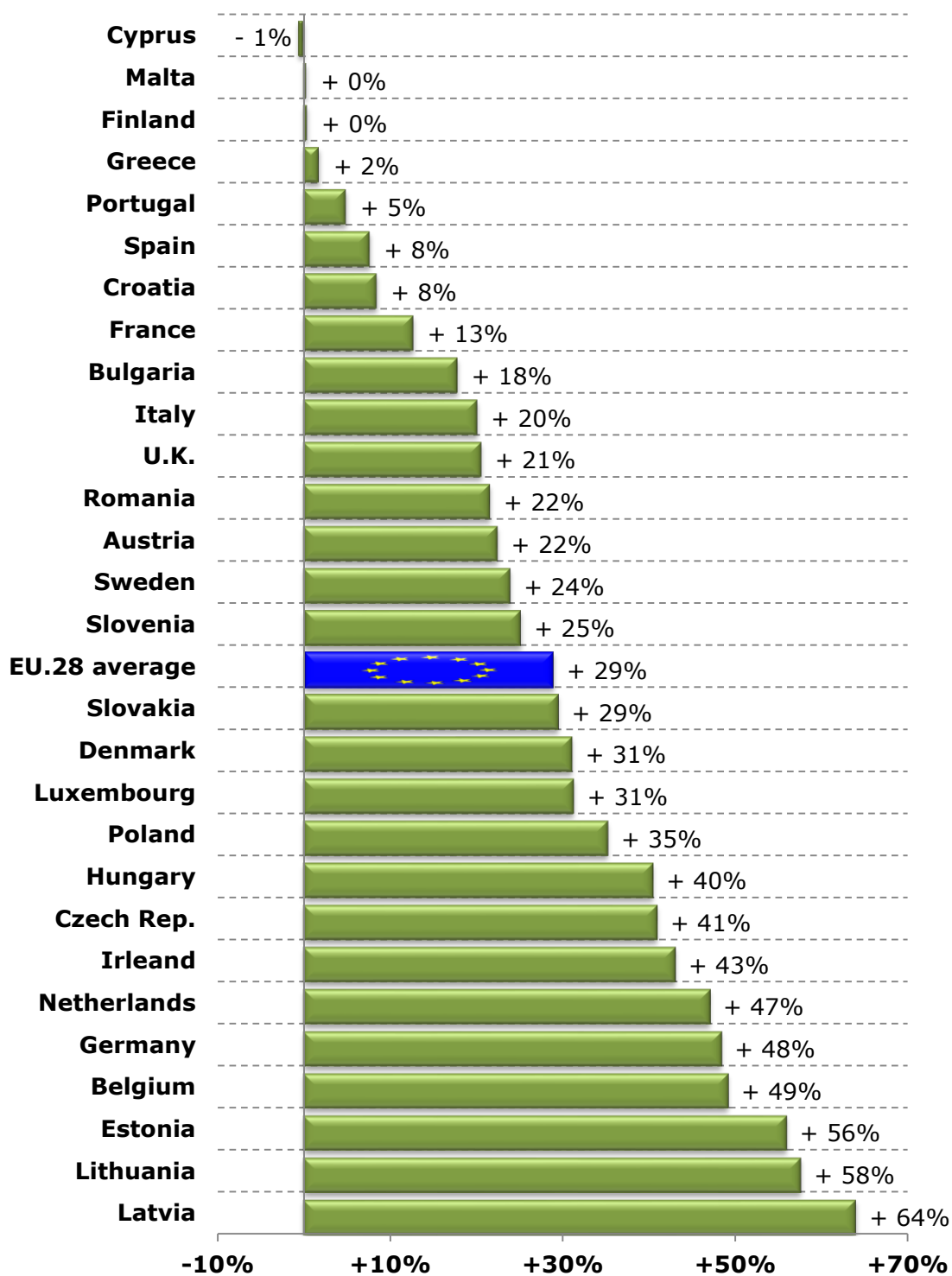
Min since	22.1	24.6	22.0	26.1	23.2	20.0	23.5	37.4	27.8	28.5	27.9	30.5	54.4	17.7	16.9	24.7	21.0	42.9	25.0	29.3	23.1	26.8	21.6	23.2	23.1	35.4	27.2	24.0	26.2	22.5	25.7
Jan 2013	Jul 16	Jun 16	Jul 16	Jul 16	Jun 16	Jul 16	Jun 16	Jun 16	Jul 16	Jul 16	Jul 16	Aug 16	May 17	Jul 16	Jun 16	Jul 16	Jul 16	Apr 16	May 16	Jun 16	Jun 16	Aug 16	Jun 16	Jun 16	Jul 16	Jul 16	Jul 16	Jul 16	Jul 16	Jun 16	Jul 16

Milk Prices paid to the Producers

EU (weight. avg.)



Raw Milk Price evolution in June 2017 compared to June 2016

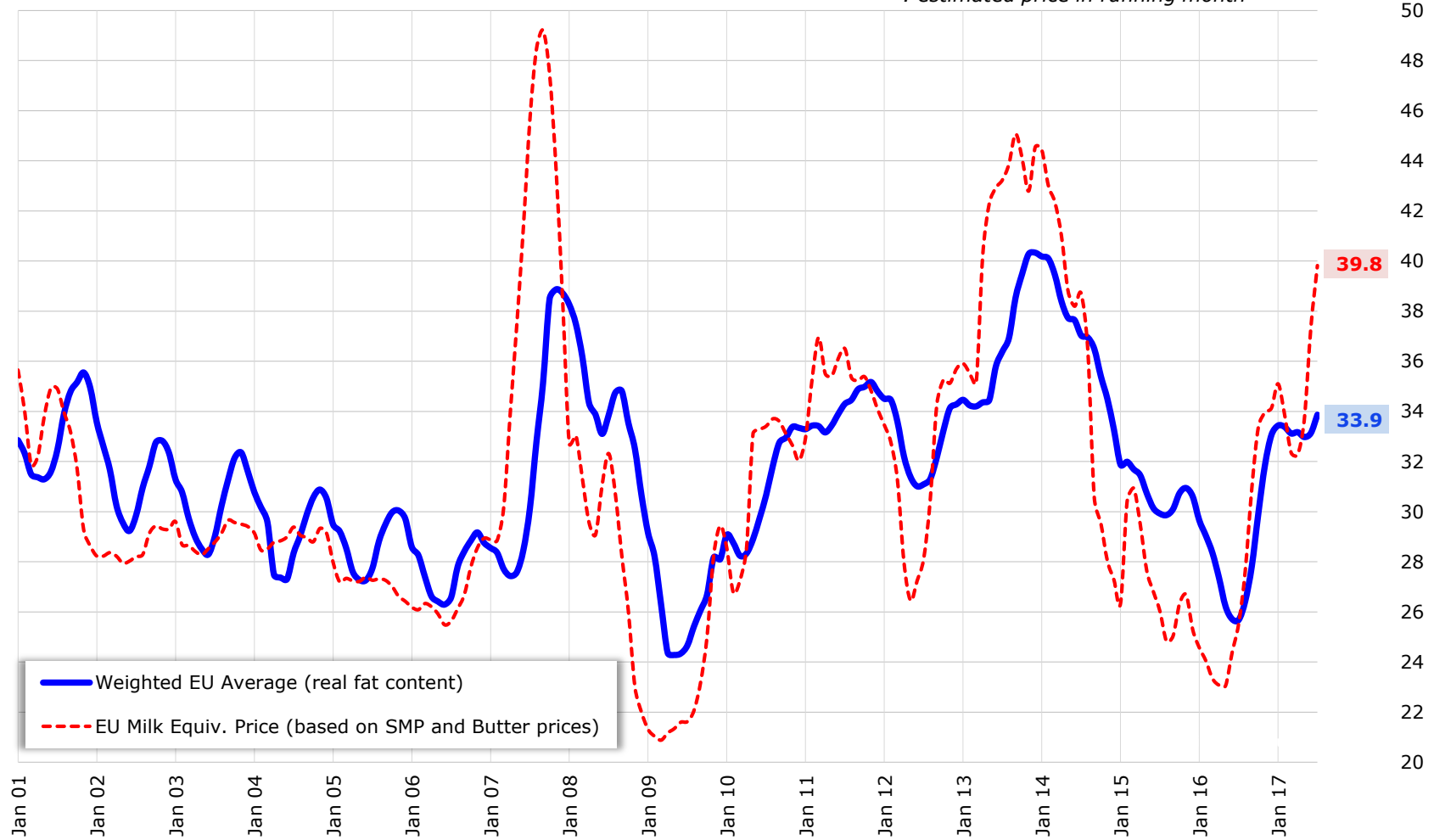


Source : Member States (Reg. (EU) No 2017/1185 Article 12(a) - Annex II.4(a))

EU Raw Milk Prices Evolution (up to July 2017*)

* : estimated price in running month

EUR/100 kg



Source : MS' communications under Reg. (EU) No 2017/1185 Article 12(a) - Annex II.4(a)

EU MILK PRICES

(Jun 2017 vs Jun 2016)

Source : Member States (Regulation (EU) No 2017/1185 Article 12(a) - Annex II.4(a))

