

Prices

Carcasse

Live Animals

EU Prices week

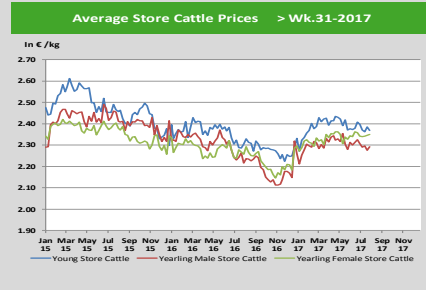
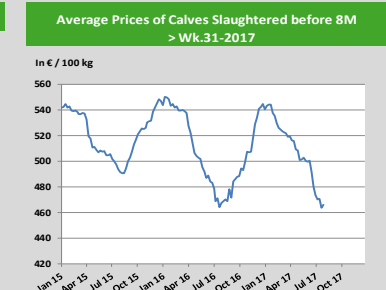
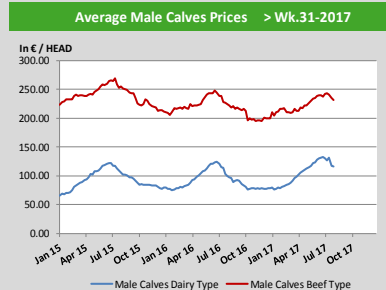
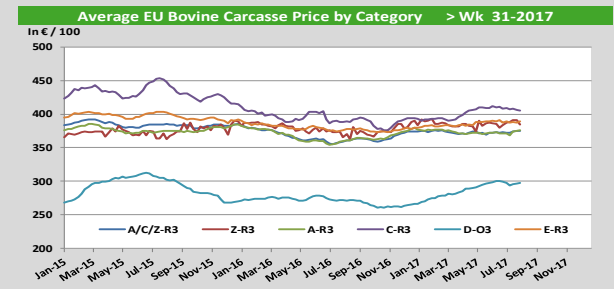
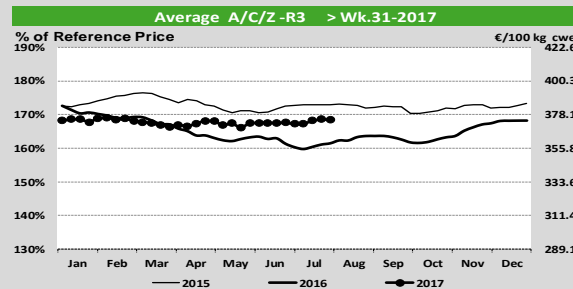
31

Evolution since last week

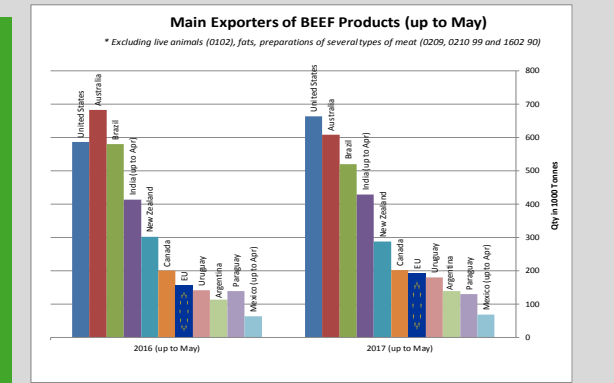
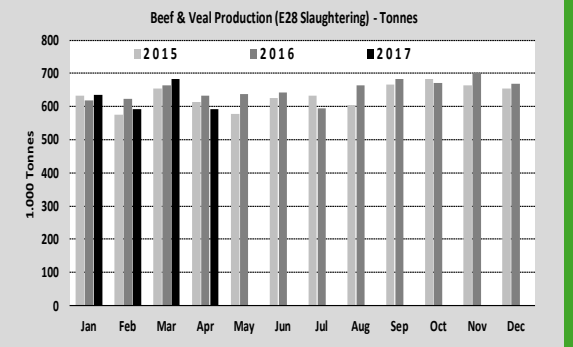
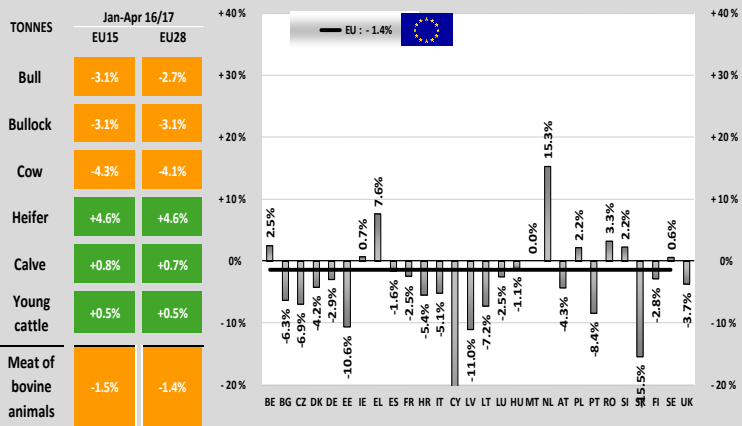
Evolution since last month

Evolution since last year

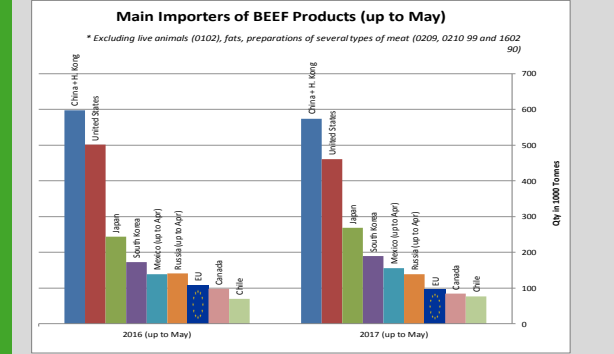
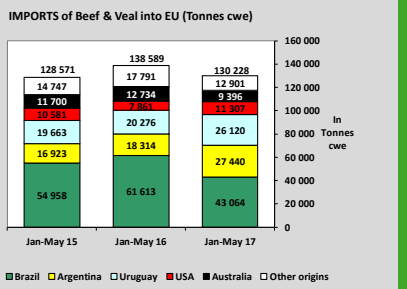
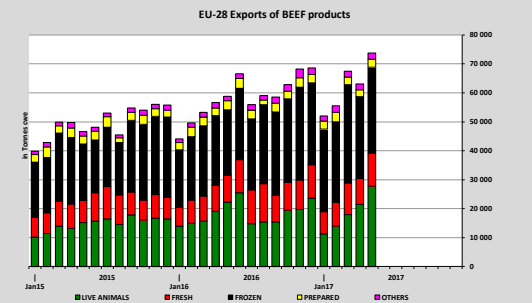
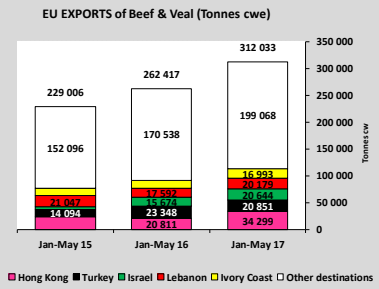
Category	Price (€/100 kg)	Evolution since last week	Evolution since last month	Evolution since last year
Average A/C/Z-R3	374.6	- 0.2%	+ 0.7%	+ 4.2%
Young Bovines (Z)	384.1	- 1.2%	- 0.8%	- 1.2%
Young Bulls (A)	371.8	+ 0.4%	+ 1.7%	+ 4.6%
Steers (C)	408.8	- 0.2%	- 0.9%	+ 3.2%
Cows (D)	297.6	+ 0.2%	+ 0.2%	+ 9.4%
Heifers (E)	389.1	+ 0.3%	- 0.0%	+ 3.5%
Male Calves Dairy Type	116.3	- 1.3%	- 10.8%	+ 17.2%
Male Calves Beef Type	231.8	- 1.5%	- 4.3%	- 1.5%
Young Store Cattle	2.37	- 0.6%	- 1.2%	+ 2.8%
Yearling Male Store Cattle	2.29	+ 0.7%	- 0.7%	+ 3.4%
Yearling Female Store Cattle	2.35	+ 0.2%	+ 0.3%	+ 4.1%
Calves slaughtered <8M	465.8	+ 0.5%	- 1.6%	- 0.3%



Production



Trade

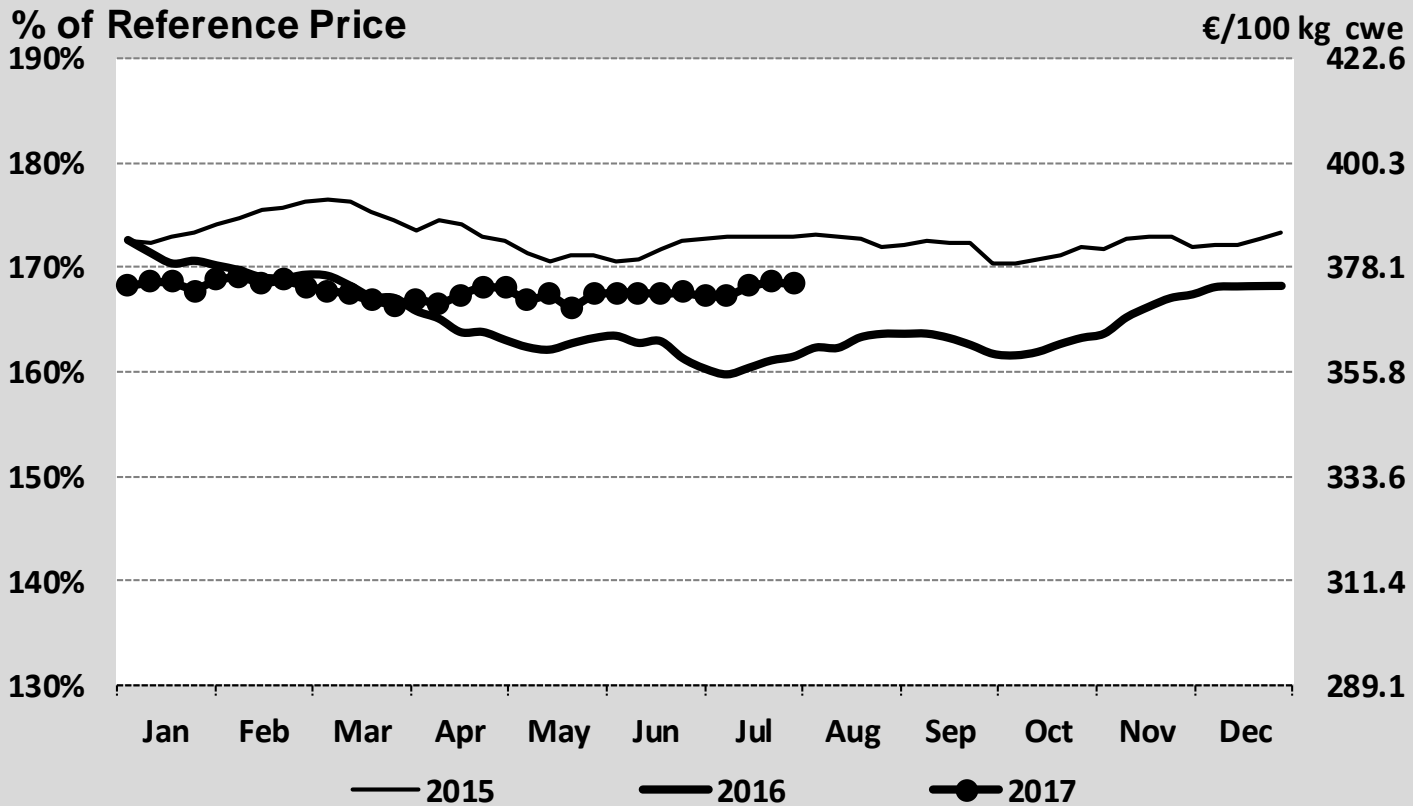


World Trade

EU Prices week		31	Evolution since last week	Evolution since last month	Evolution since last year
Carcasse	Average A/C/Z -R3	374.6	- 0.2%	+ 0.7%	+ 4.2%
	Young Bovines (Z)	384.1	- 1.2%	- 0.8%	- 1.2%
	Young Bulls (A)	371.8	+ 0.4%	+ 1.7%	+ 4.6%
	Steers (C)	408.8	- 0.2%	- 0.9%	+ 3.2%
	Cows (D)	297.6	+ 0.2%	+ 0.2%	+ 9.4%
	Heifers (E)	389.1	+ 0.3%	- 0.0%	+ 3.5%
Live Animals	Male Calves Dairy Type	116.3	- 1.3%	- 10.8%	+ 17.2%
	Male Calves Beef Type	231.8	- 1.5%	- 4.3%	- 1.5%
	Young Store Cattle	2.37	- 0.6%	- 1.2%	+ 2.8%
	Yearling Male Store Cattle	2.29	+ 0.7%	- 0.7%	+ 3.4%
	Yearling Female Store Cattle	2.35	+ 0.2%	+ 0.3%	+ 4.1%
	Calves slaughtered <8M	465.8	+ 0.5%	- 1.6%	- 0.3%

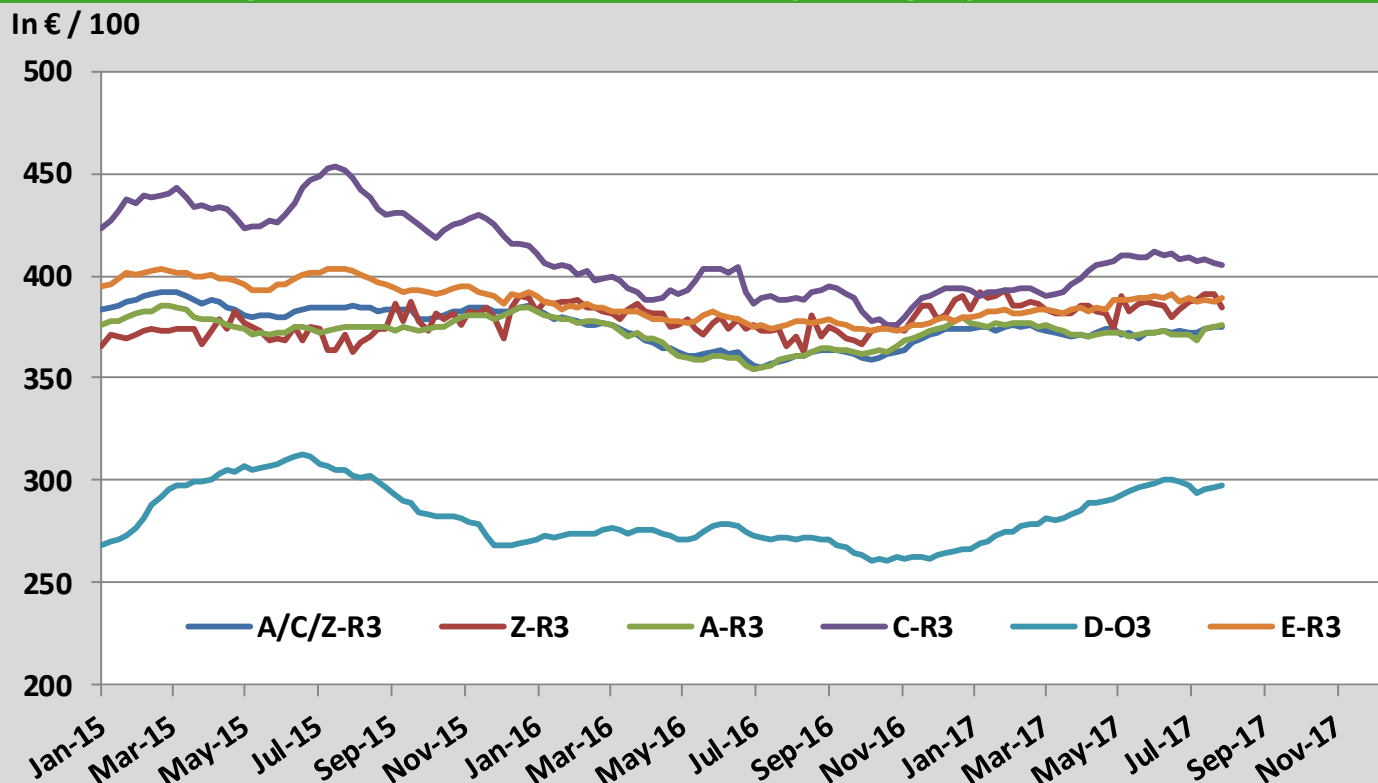
Sources : MSs notifications (Regulation (EC) 1249/2008 and 807/2013)

Average A/C/Z -R3 > Wk.31-2017



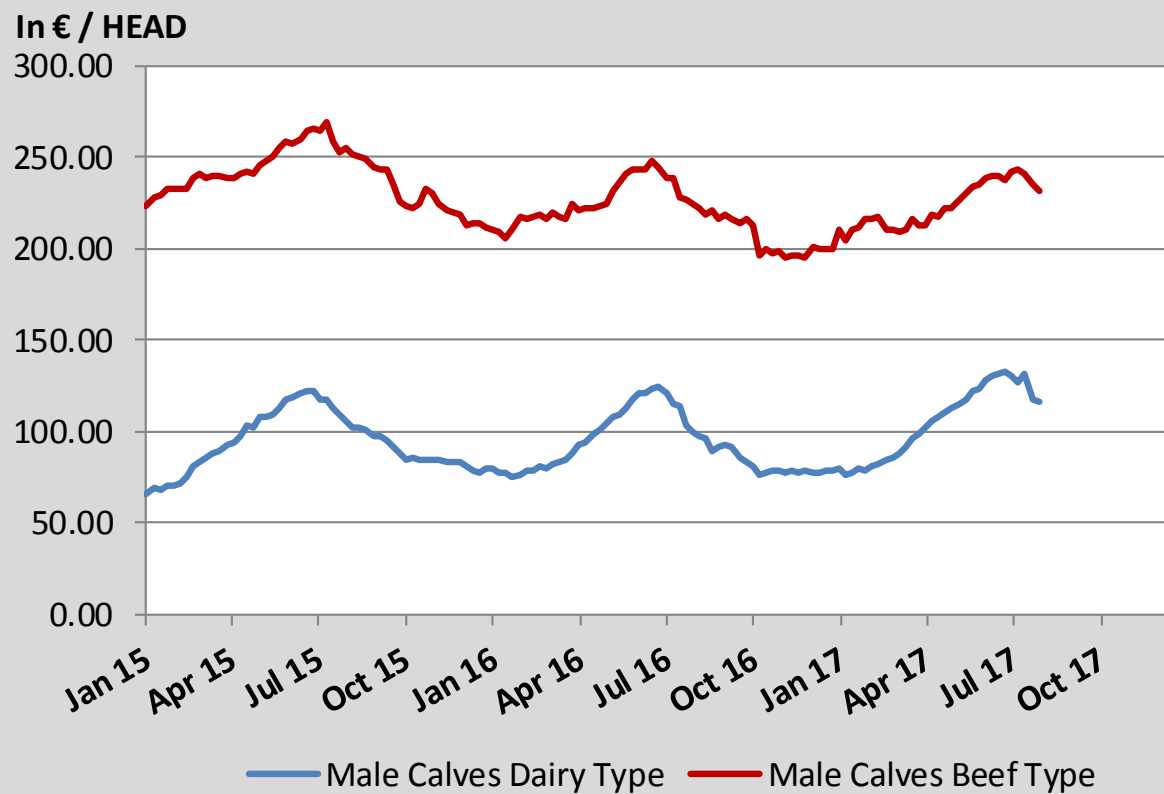
Source : MSs notifications (Regulation (EC) 1249/2008)

Average EU Bovine Carcasse Price by Category > Wk 31-2017



Source : MSs notifications (Regulation (EC) 1249/2008)

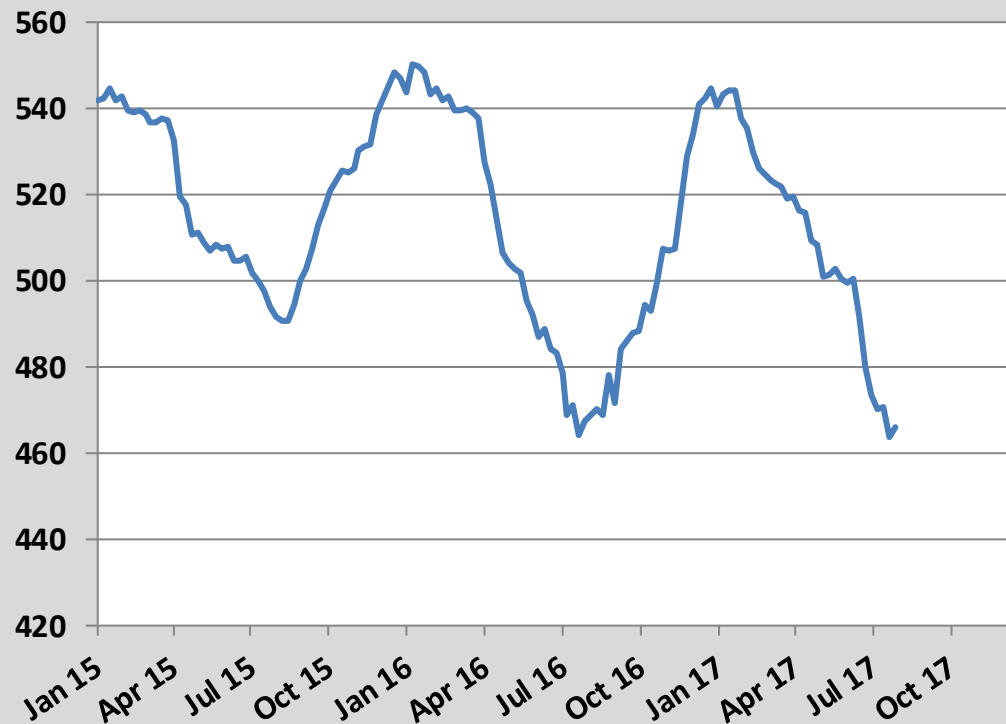
Average Male Calves Prices > Wk.31-2017



Source : MSs notifications (Regulation (EC) 807/2013)

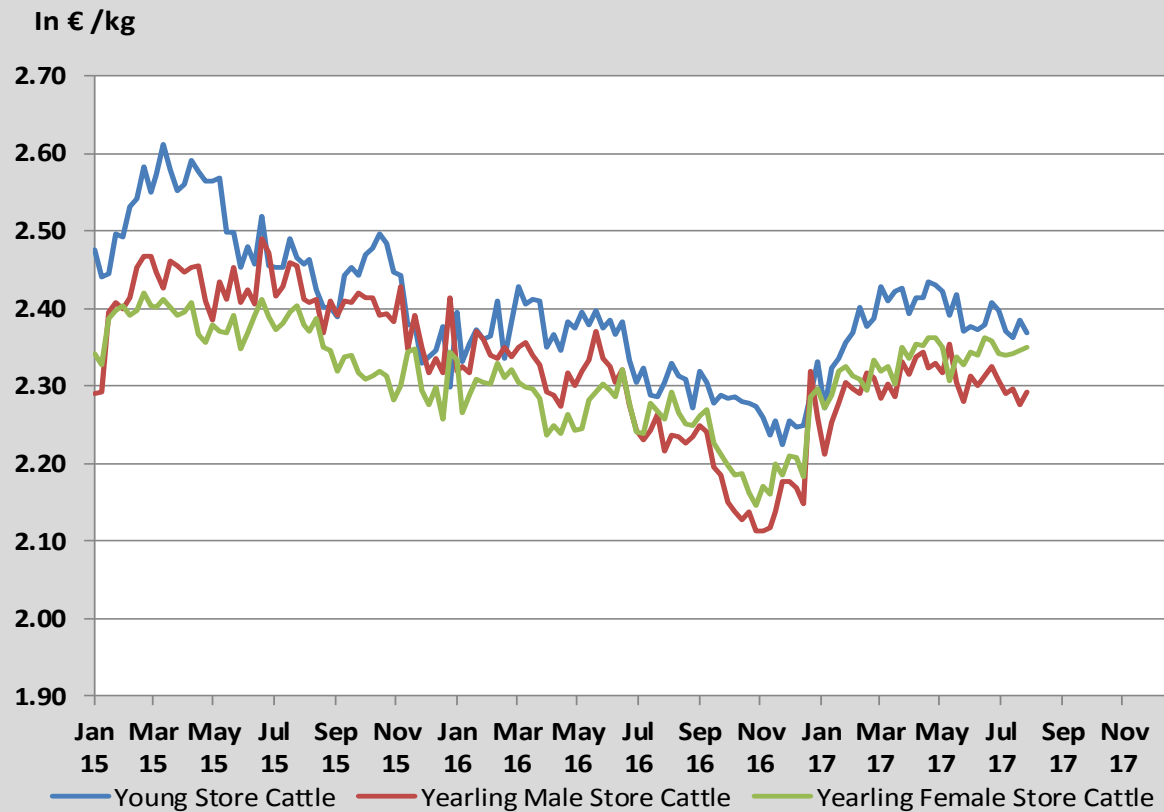
Average Prices of Calves Slaughtered before 8M > Wk.31-2017

In € / 100 kg



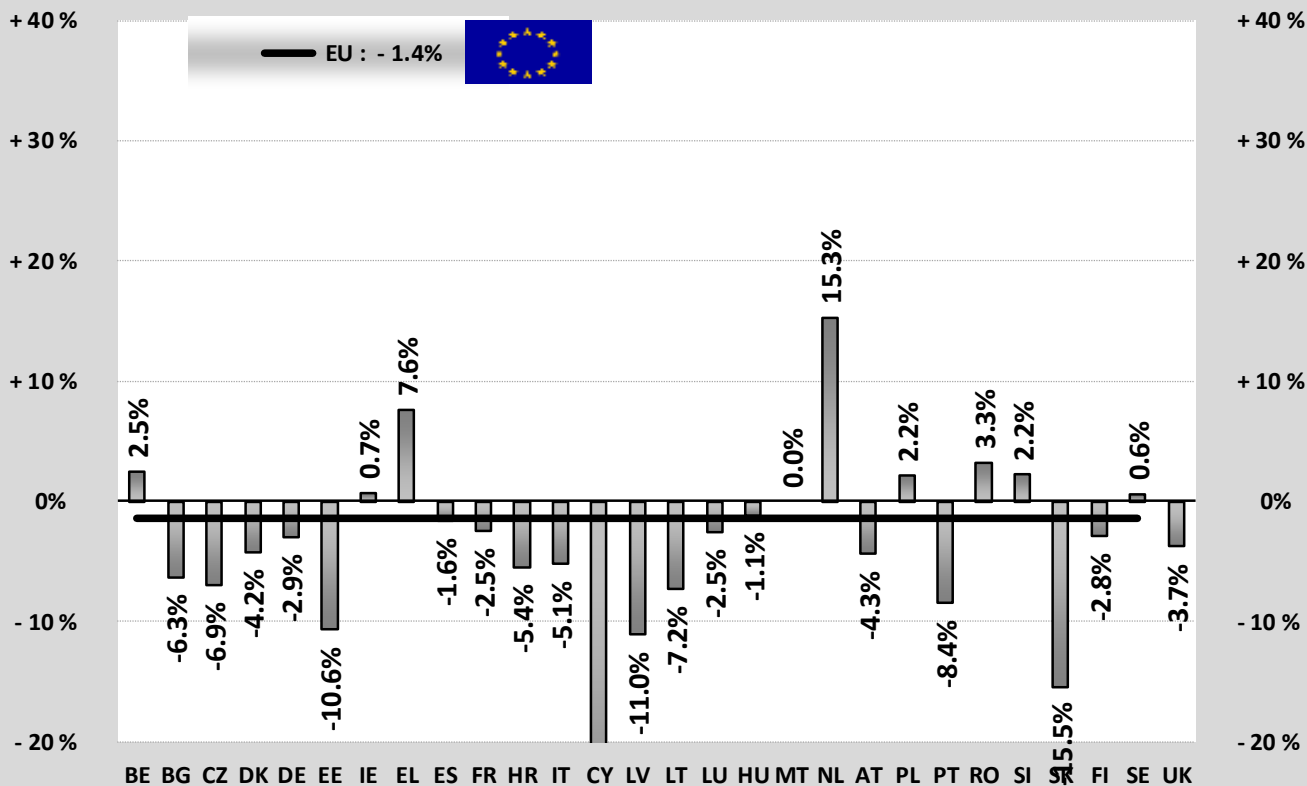
Source : MSs notifications (Regulation (EC) 807/2013)

Average Store Cattle Prices > Wk.31-2017



Source : MSs notifications (Regulation (EC) 807/2013)

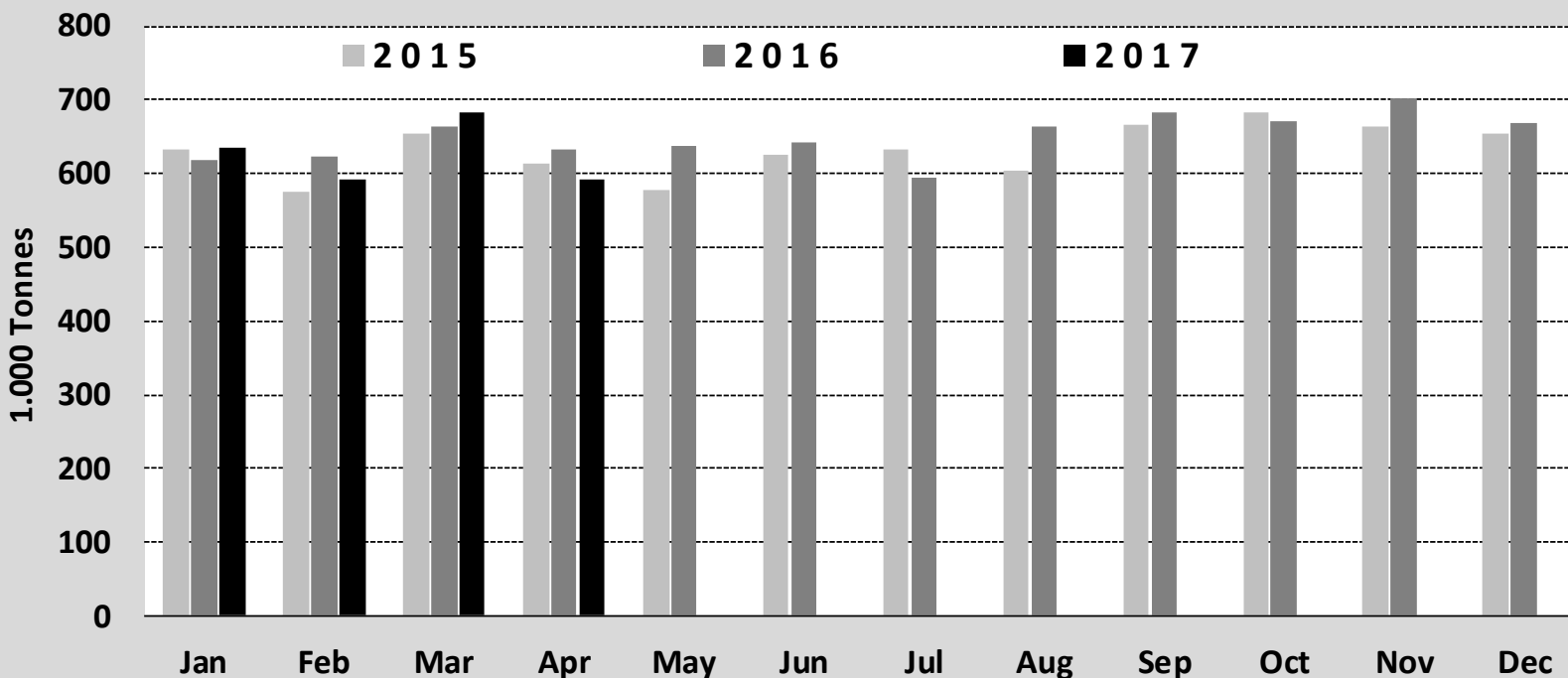
TONNES	Jan-Apr 16/17	
	EU15	EU28
Bull	-3.1%	-2.7%
Bullock	-3.1%	-3.1%
Cow	-4.3%	-4.1%
Heifer	+4.6%	+4.6%
Calve	+0.8%	+0.7%
Young cattle	+0.5%	+0.5%
Meat of bovine animals	-1.5%	-1.4%



Estimates for last month :

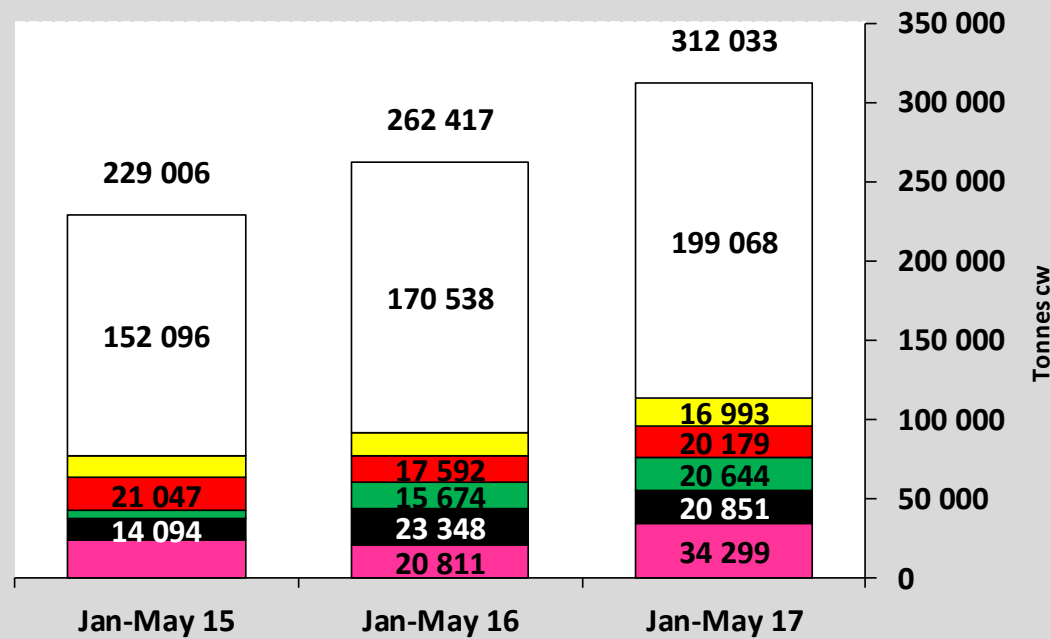
Source : Eurostat

Beef & Veal Production (E28 Slaughtering) - Tonnes



Source : Eurostat

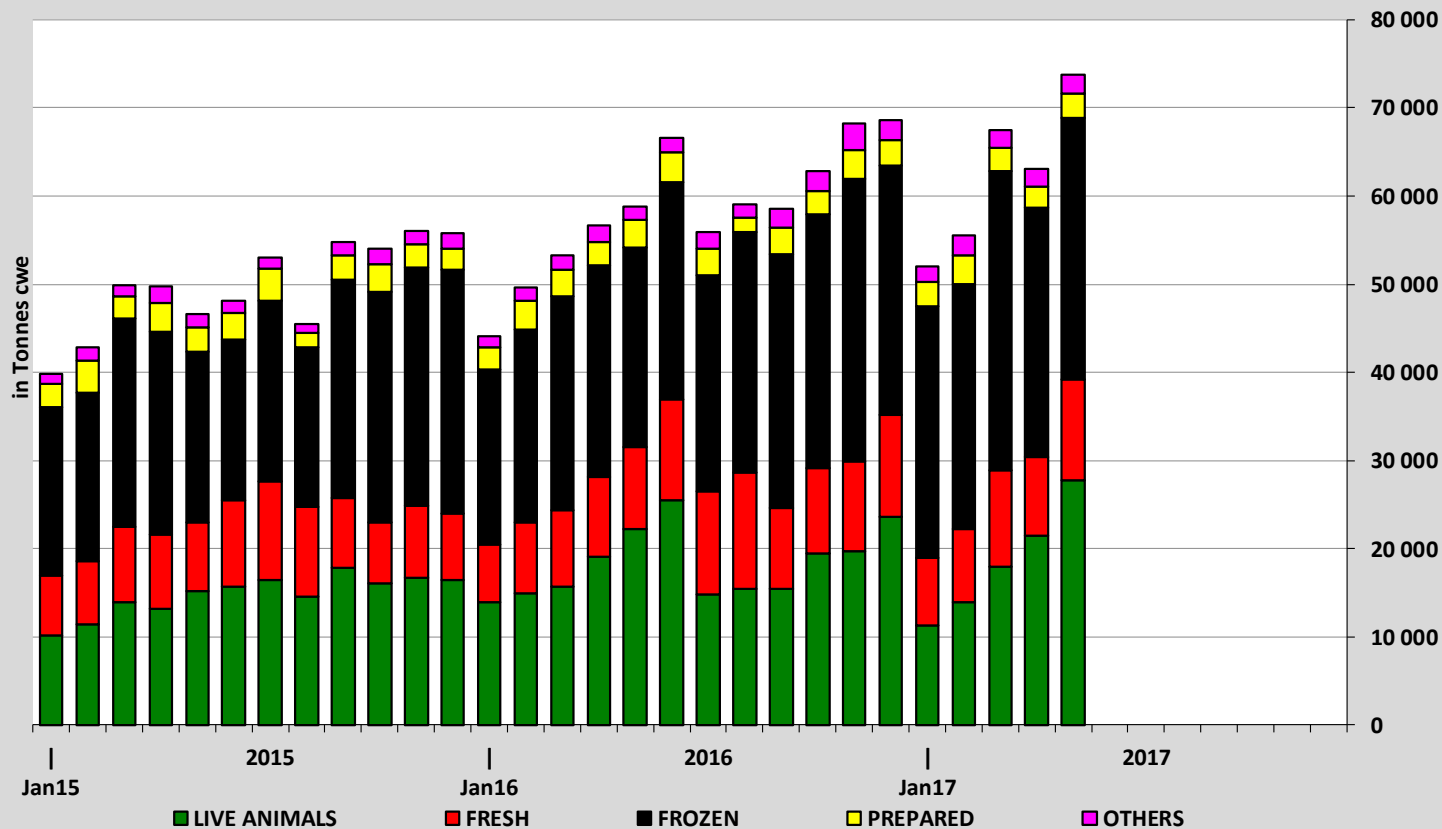
EU EXPORTS of Beef & Veal (Tonnes cwe)



■ Hong Kong
 ■ Turkey
 ■ Israel
 ■ Lebanon
 ■ Ivory Coast
 ■ Other destinations

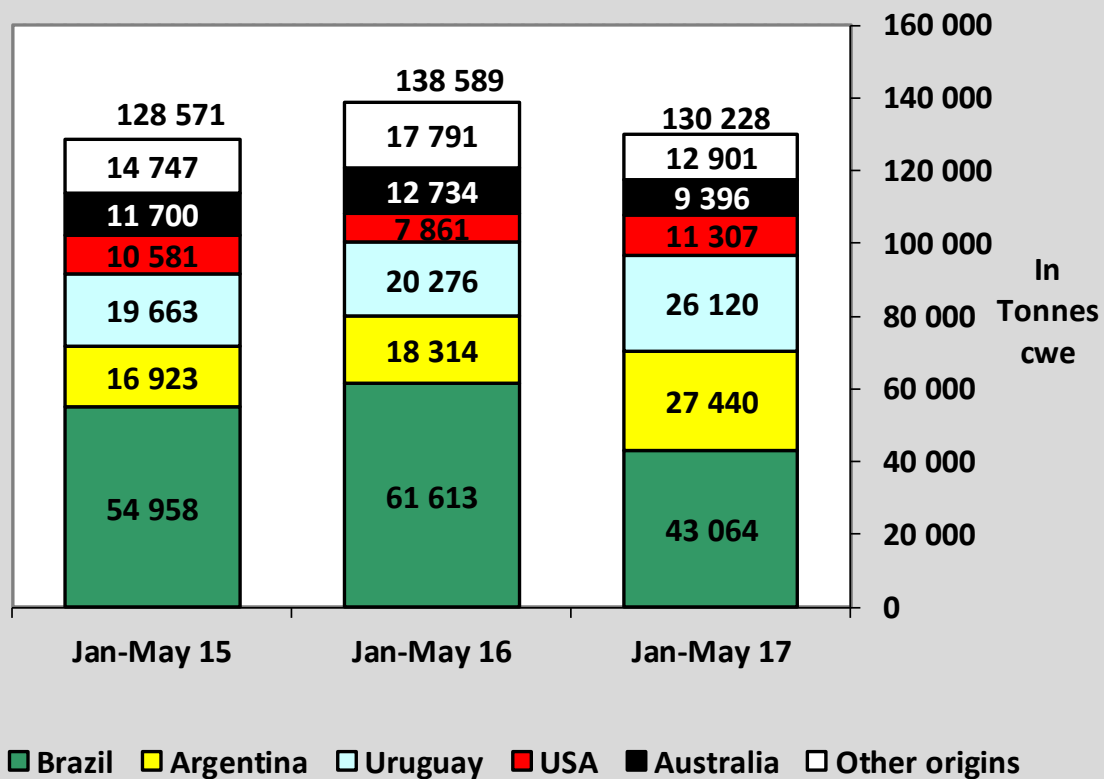
Source : Eurostat - Comext

EU-28 Exports of BEEF products



Source : Eurostat - Comext

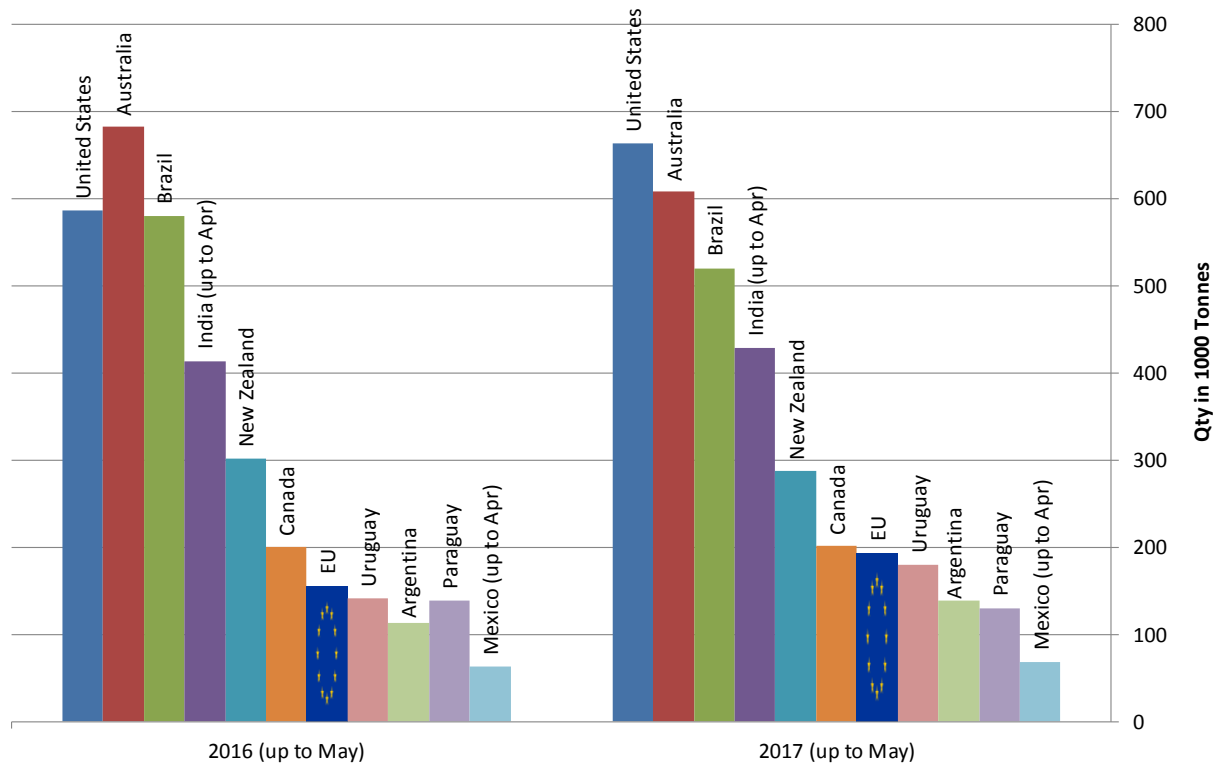
IMPORTS of Beef & Veal into EU (Tonnes cwe)



Source : Eurostat - Comext

Main Exporters of BEEF Products (up to May)

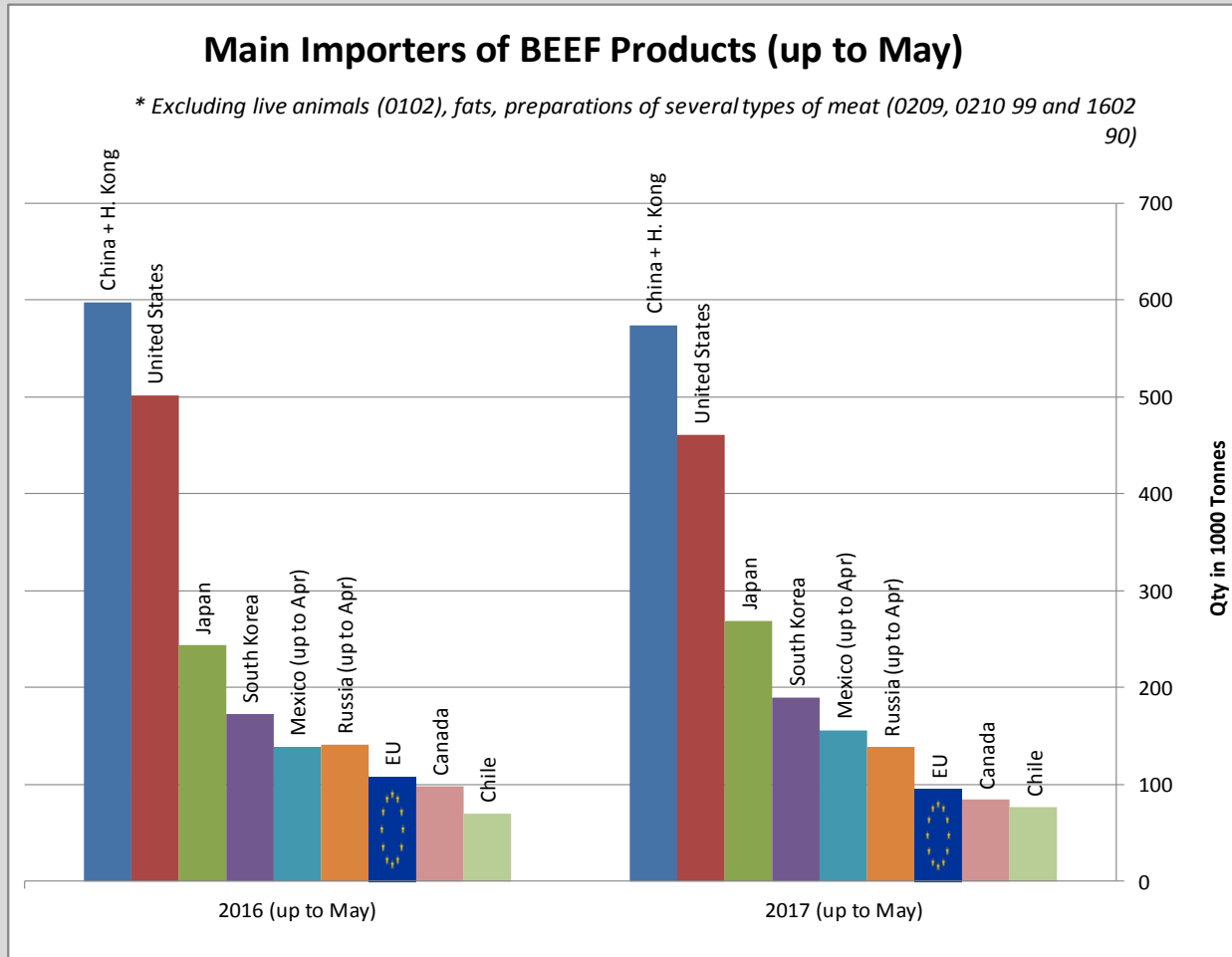
* Excluding live animals (0102), fats, preparations of several types of meat (0209, 0210 99 and 1602 90)



Sources : Global Trade Information Services, Inc. and Eurostat - Comext

Main Importers of BEEF Products (up to May)

* Excluding live animals (0102), fats, preparations of several types of meat (0209, 0210 99 and 1602 90)



Sources : Global Trade Information Services, Inc. and Eurostat - Comext