

Prices

Carcasse

Live Animals

EU Prices week

29

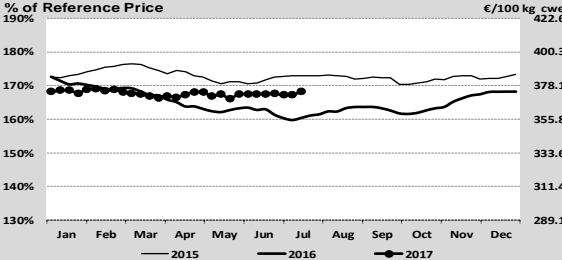
Evolution since last week

Evolution since last month

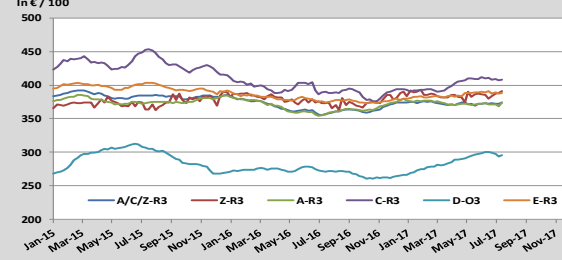
Evolution since last year

Category	Price (€/100 kg)	Evolution since last week	Evolution since last month	Evolution since last year
Average A/C/Z-R3	374.	+ 0.3%	+ 0.5%	+ 4.9%
Young Bovines (Z)	391.	+ 0.0%	+ 3.0%	+ 0.0%
Young Bulls (A)	368.	+ 0.3%	+ 0.7%	+ 4.5%
Steers (C)	411.0	- 0.2%	- 0.7%	+ 4.2%
Cows (D)	295.7	- 0.3%	- 1.6%	+ 9.0%
Heifers (E)	388.0	- 0.1%	- 0.7%	+ 3.7%
Male Calves Dairy Type	130.9	+ 3.3%	- 0.3%	+ 14.8%
Male Calves Beef Type	241.5	- 0.6%	+ 0.8%	- 0.6%
Young Store Cattle	2.35	- 0.7%	- 1.1%	+ 2.9%
Yearling Male Store Cattle	2.29	+ 0.2%	- 0.8%	+ 2.3%
Yearling Female Store Cattle	2.38	- 0.1%	+ 0.8%	+ 4.5%
Calves slaughtered <8M	470.	+ 0.0%	- 4.3%	- 0.1%

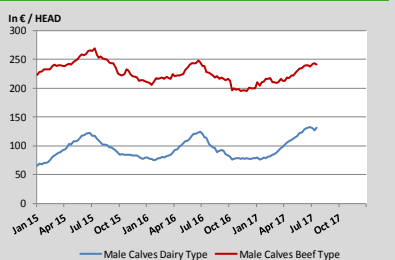
Average A/C/Z-R3 > Wk.29-2017



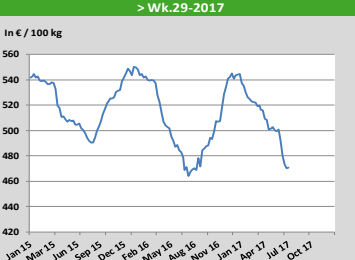
Average EU Bovine Carcasse Price by Category > Wk.29-2017



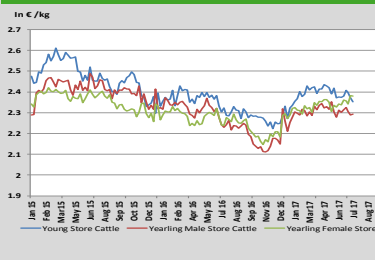
Average Male Calves Prices > Wk.29-2017



Average Prices of Calves Slaughtered before 8M > Wk.29-2017

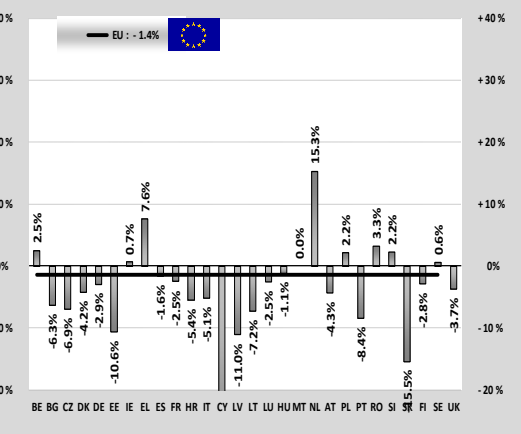


Average Store Cattle Prices > Wk.29-2017

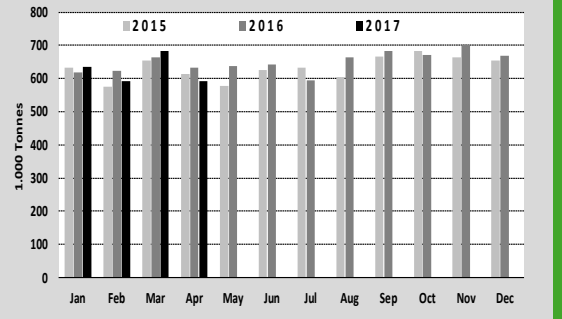


Production

Category	Jan-Apr 16/17	EU28	EU15
Bull	-3.1%	-2.7%	-3.1%
Bullock	-3.1%	-3.1%	-3.1%
Cow	-4.3%	-4.1%	-4.3%
Heifer	+4.6%	+4.6%	+4.6%
Calve	+0.8%	+0.7%	+0.8%
Young cattle	+0.5%	+0.5%	+0.5%
Meat of bovine animals	-1.5%	-1.4%	-1.5%

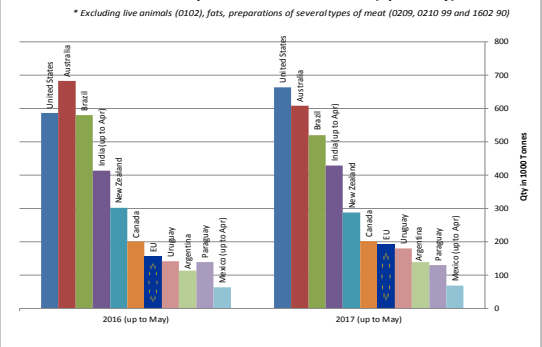


Beef & Veal Production (E28 Slaughtering) - Tonnes

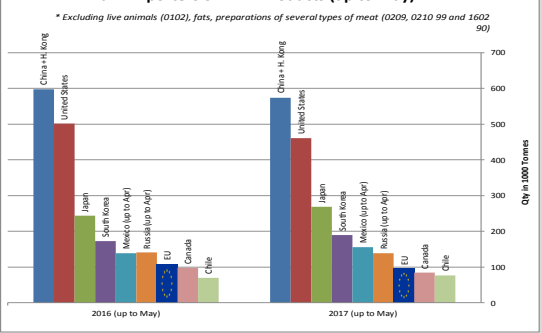


World Trade

Main Exporters of BEEF Products (up to May)

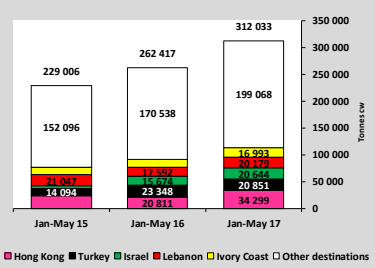


Main Importers of BEEF Products (up to May)

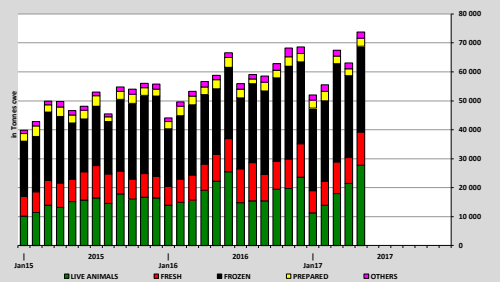


Trade

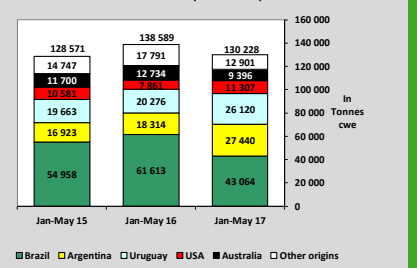
EU EXPORTS of Beef & Veal (Tonnes cwe)



EU-28 Exports of BEEF products



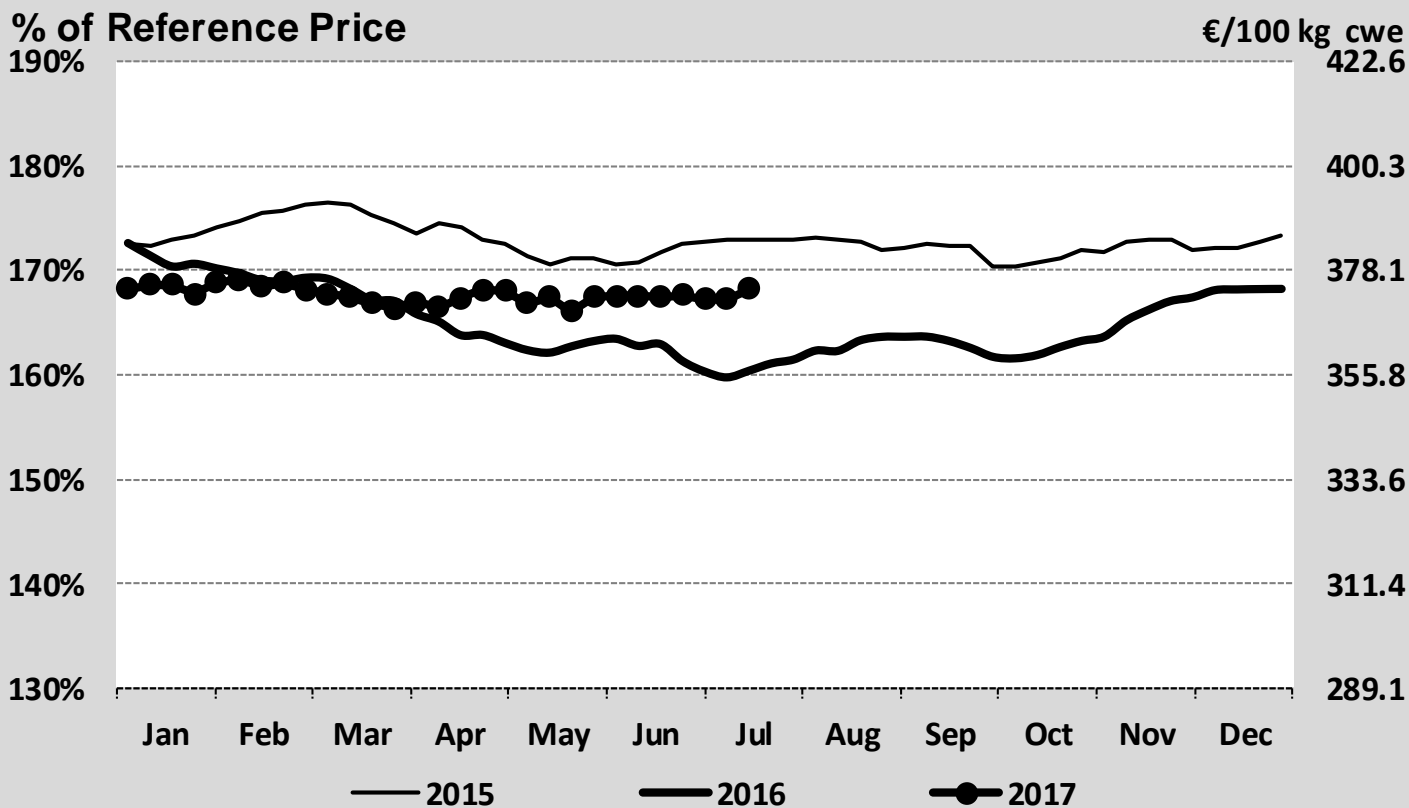
IMPORTS of Beef & Veal into EU (Tonnes cwe)



EU Prices week		29	Evolution since last week	Evolution since last month	Evolution since last year
Carcasse	Average A/C/Z -R3	374.	+ 0.3%	+ 0.5%	+ 4.9%
	Young Bovines (Z)	391.	+ 0.0%	+ 3.0%	+ 0.0%
	Young Bulls (A)	368.	+ 0.3%	+ 0.7%	+ 4.5%
	Steers (C)	411.0	- 0.2%	- 0.7%	+ 4.2%
	Cows (D)	295.7	- 0.3%	- 1.6%	+ 9.0%
	Heifers (E)	388.0	- 0.1%	- 0.7%	+ 3.7%
Live Animals	Male Calves Dairy Type	130.9	+ 3.3%	- 0.3%	+ 14.8%
	Male Calves Beef Type	241.5	- 0.6%	+ 0.8%	- 0.6%
	Young Store Cattle	2.35	- 0.7%	- 1.1%	+ 2.9%
	Yearling Male Store Cattle	2.29	+ 0.2%	- 0.8%	+ 2.3%
	Yearling Female Store Cattle	2.38	- 0.1%	+ 0.8%	+ 4.5%
	Calves slaughtered <8M	470.	+ 0.0%	- 4.3%	- 0.1%

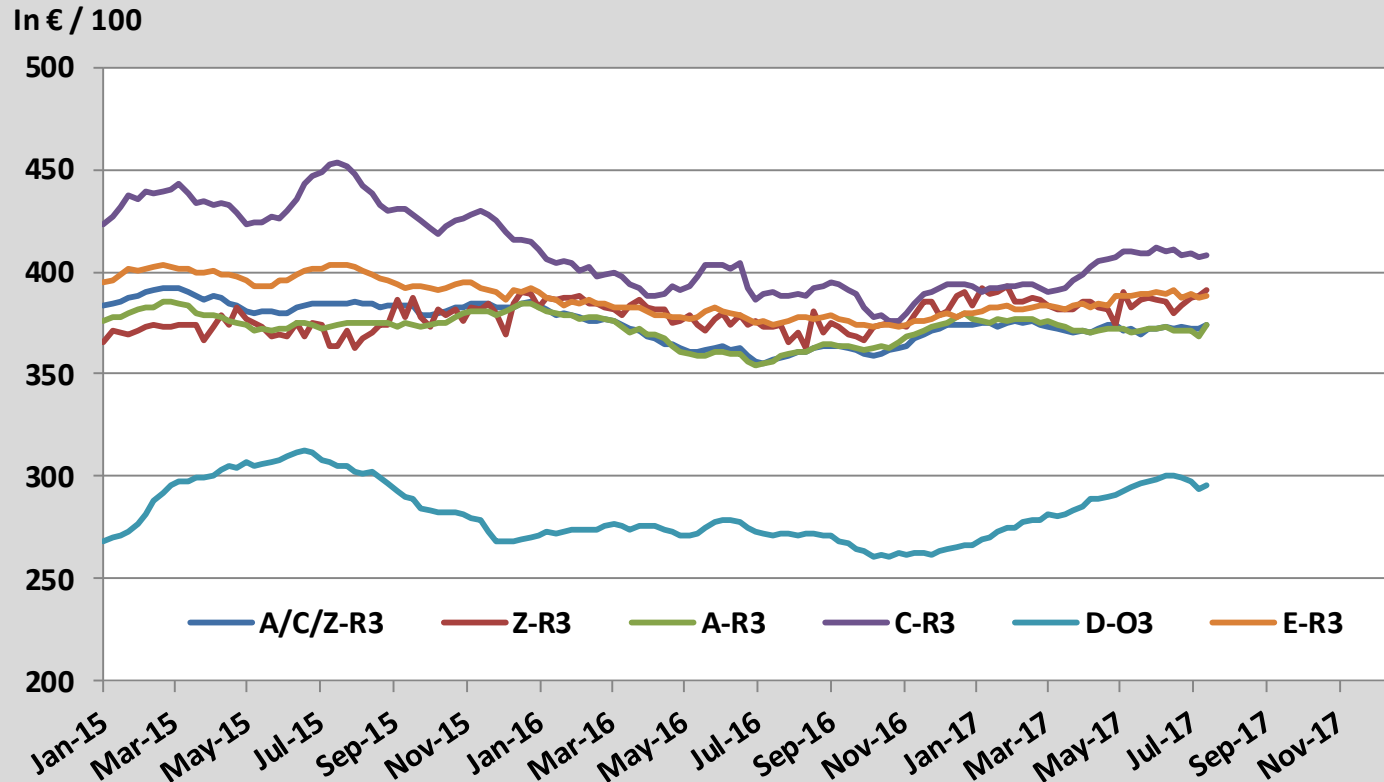
Sources : MSs notifications (Regulation (EC) 1249/2008 and 807/2013)

Average A/C/Z -R3 > Wk.29-2017



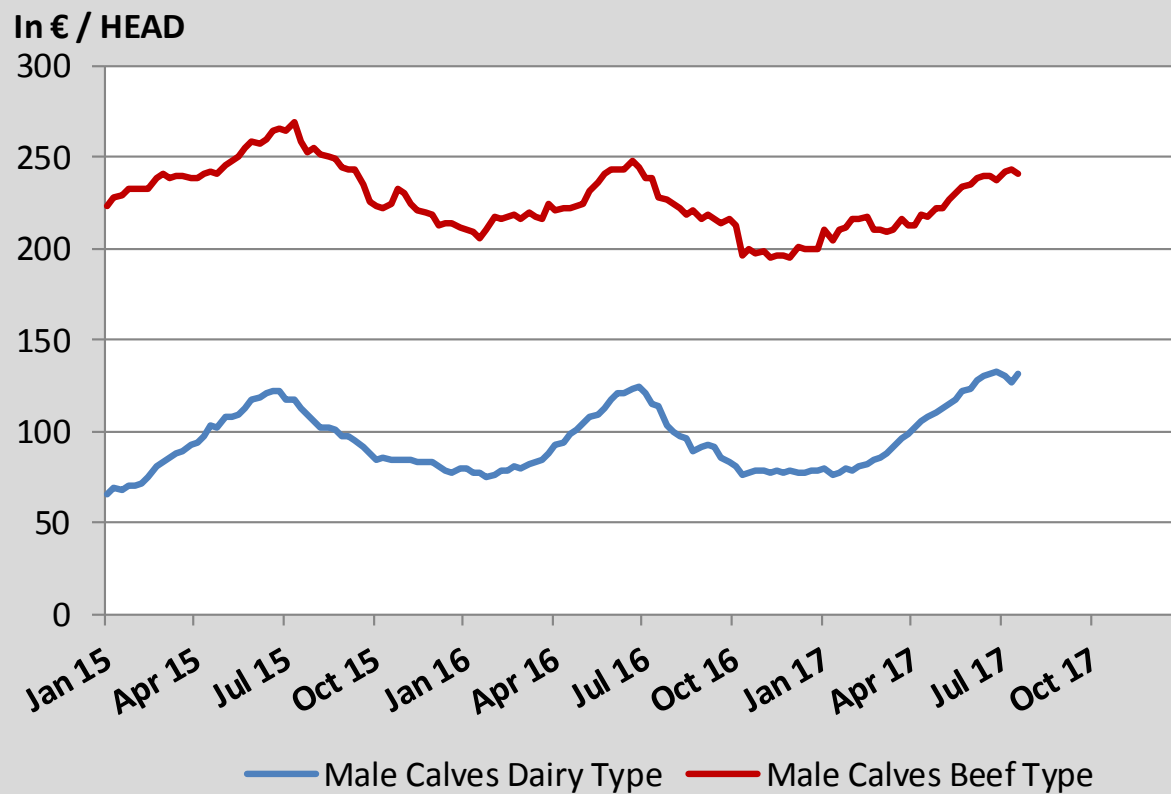
Source : MSs notifications (Regulation (EC) 1249/2008)

Average EU Bovine Carcasse Price by Category > Wk 29-2017



Source : MSs notifications (Regulation (EC) 1249/2008)

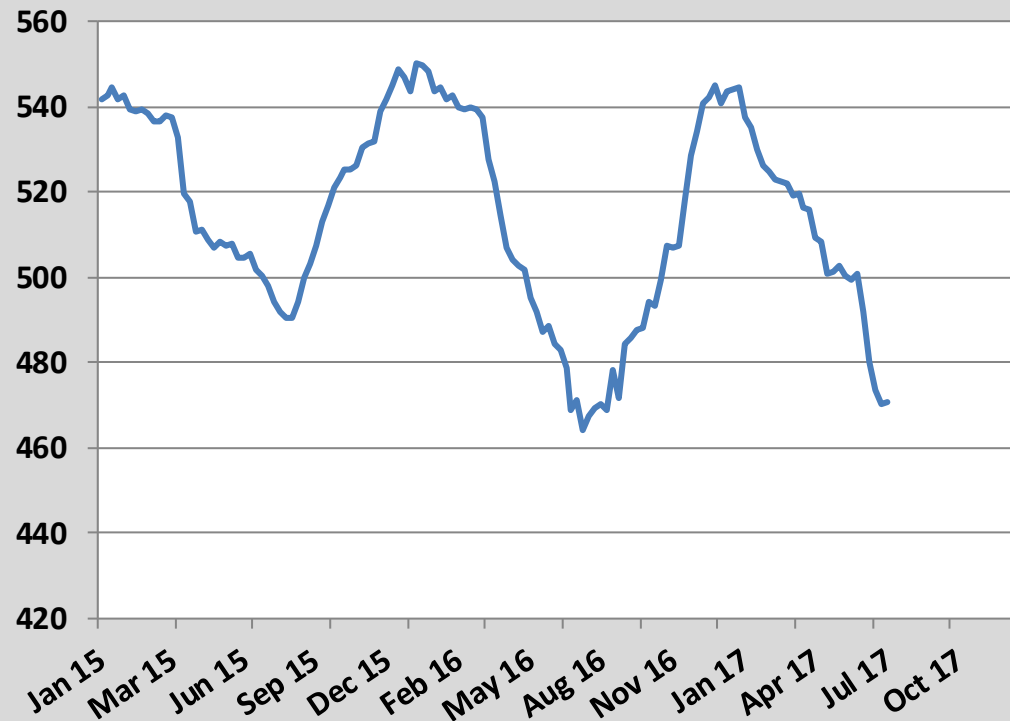
Average Male Calves Prices > Wk.29-2017



Source : MSs notifications (Regulation (EC) 807/2013)

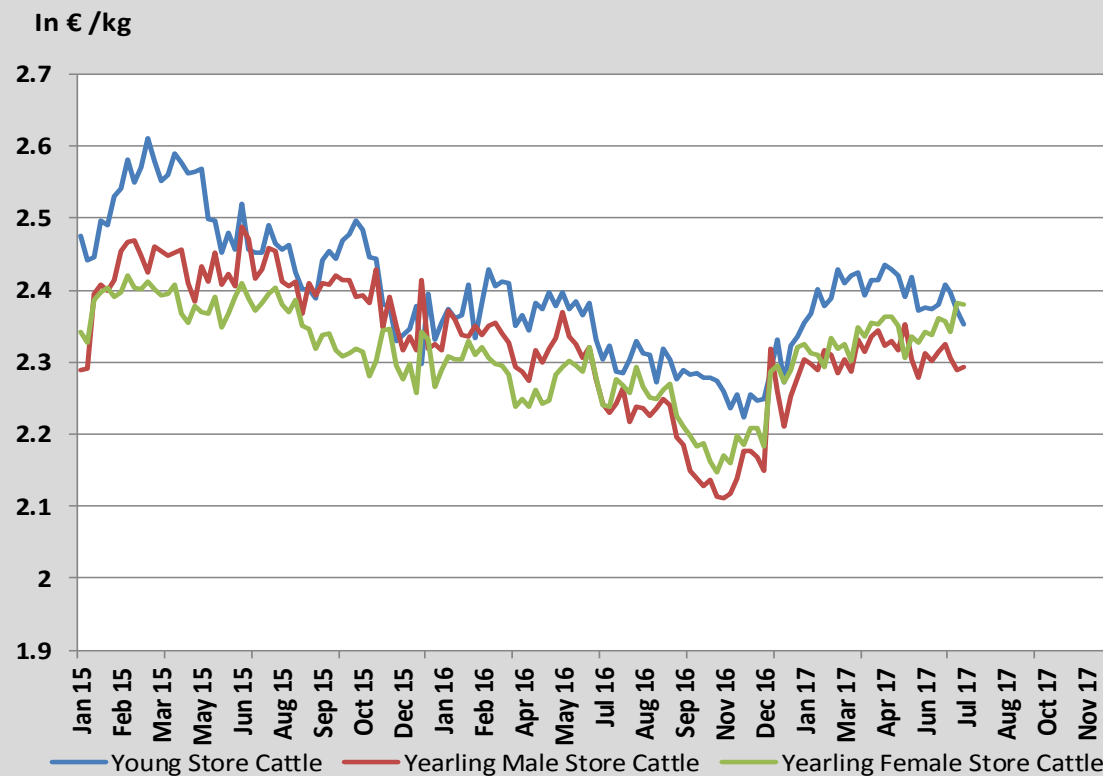
Average Prices of Calves Slaughtered before 8M > Wk.29-2017

In € / 100 kg



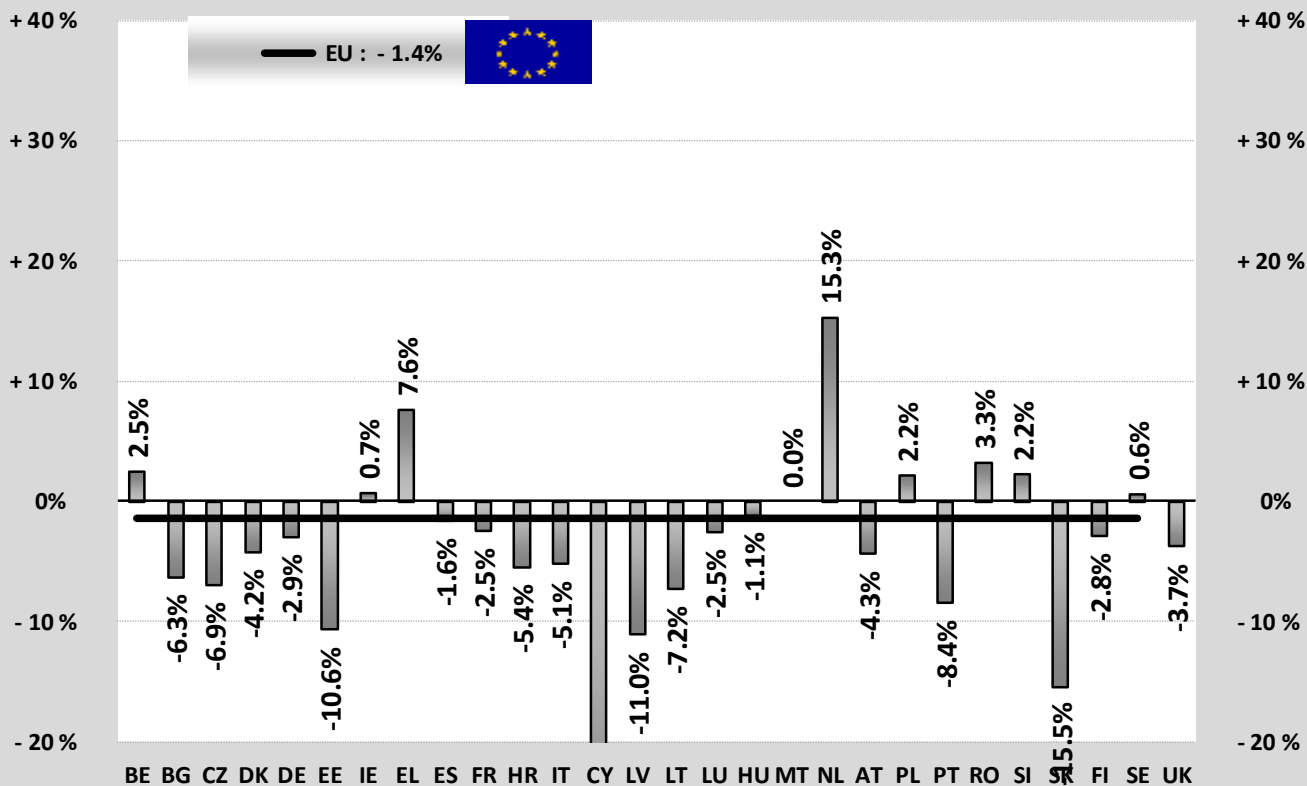
Source : MSs notifications (Regulation (EC) 807/2013)

Average Store Cattle Prices > Wk.29-2017



Source : MSs notifications (Regulation (EC) 807/2013)

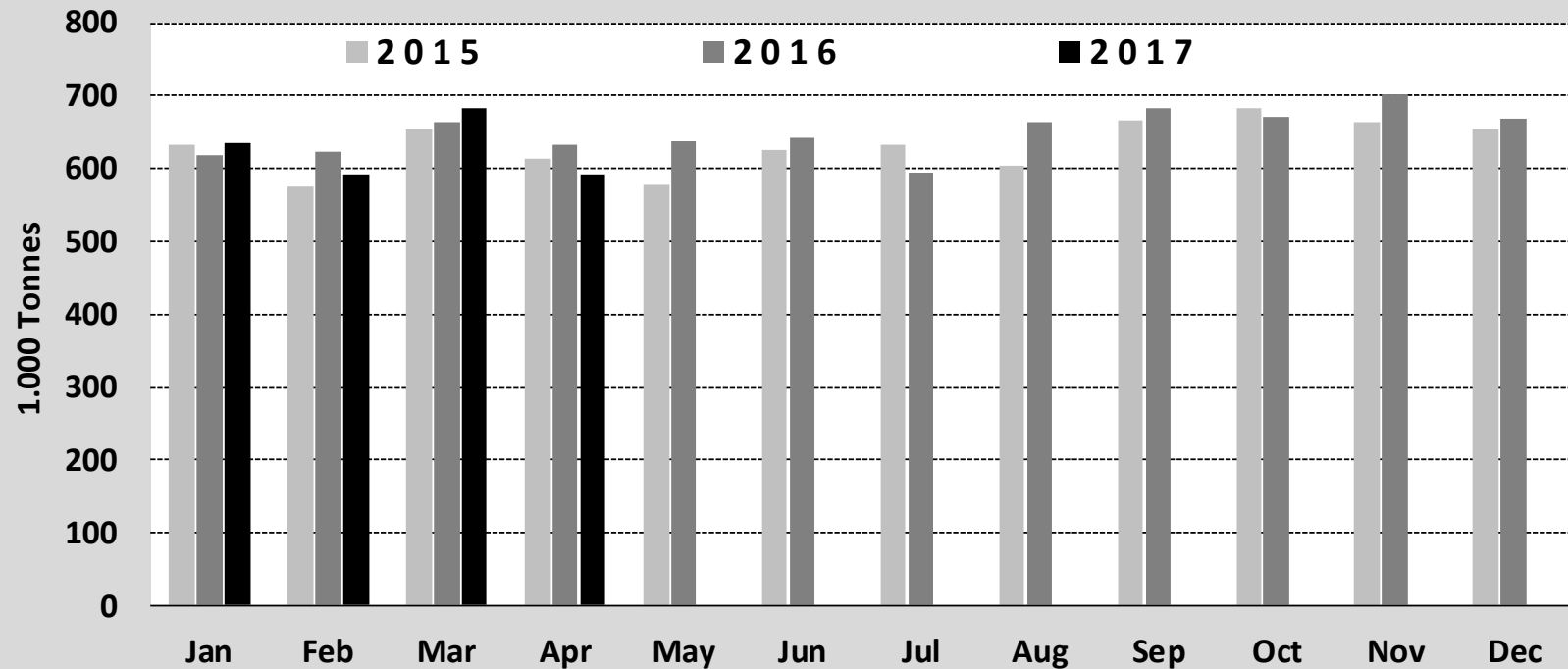
TONNES	Jan-Apr 16/17	
	EU15	EU28
Bull	-3.1%	-2.7%
Bullock	-3.1%	-3.1%
Cow	-4.3%	-4.1%
Heifer	+4.6%	+4.6%
Calve	+0.8%	+0.7%
Young cattle	+0.5%	+0.5%
Meat of bovine animals	-1.5%	-1.4%



Estimates for last month :

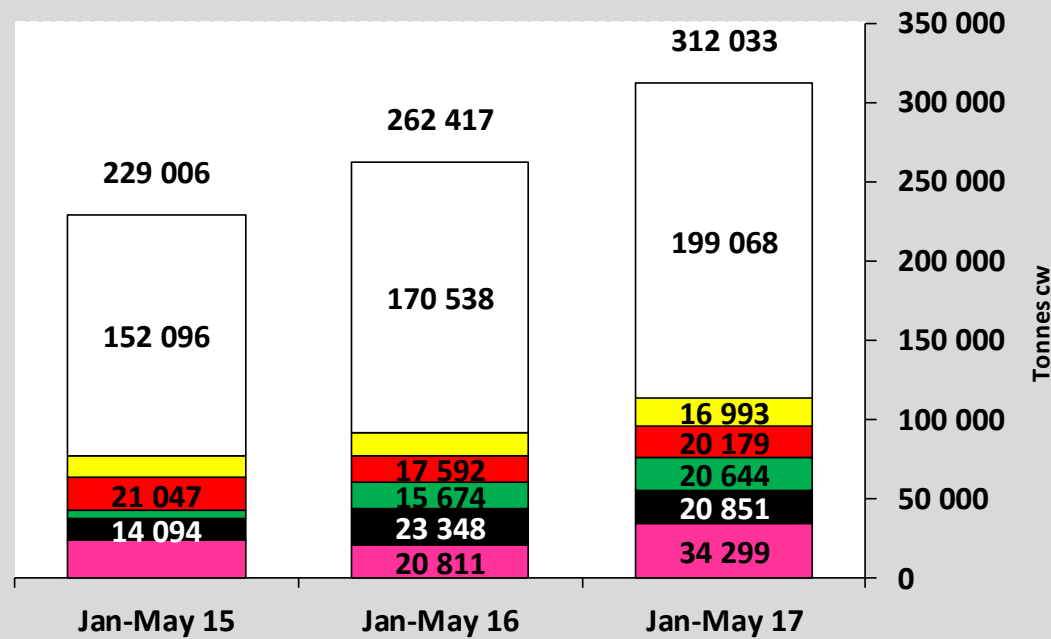
Source : Eurostat

Beef & Veal Production (E28 Slaughtering) - Tonnes



Source : Eurostat

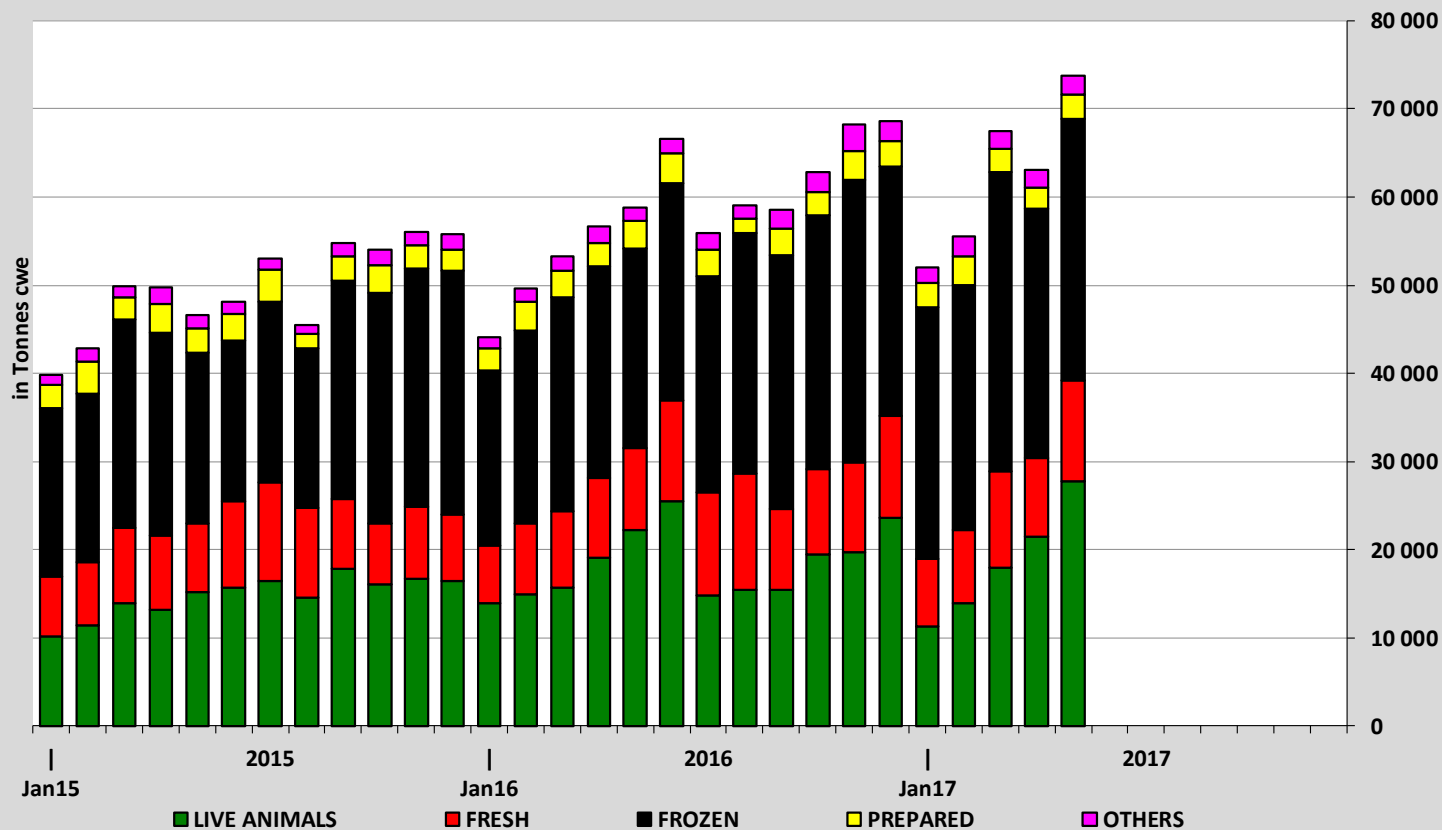
EU EXPORTS of Beef & Veal (Tonnes cwe)



■ Hong Kong
 ■ Turkey
 ■ Israel
 ■ Lebanon
 ■ Ivory Coast
 ■ Other destinations

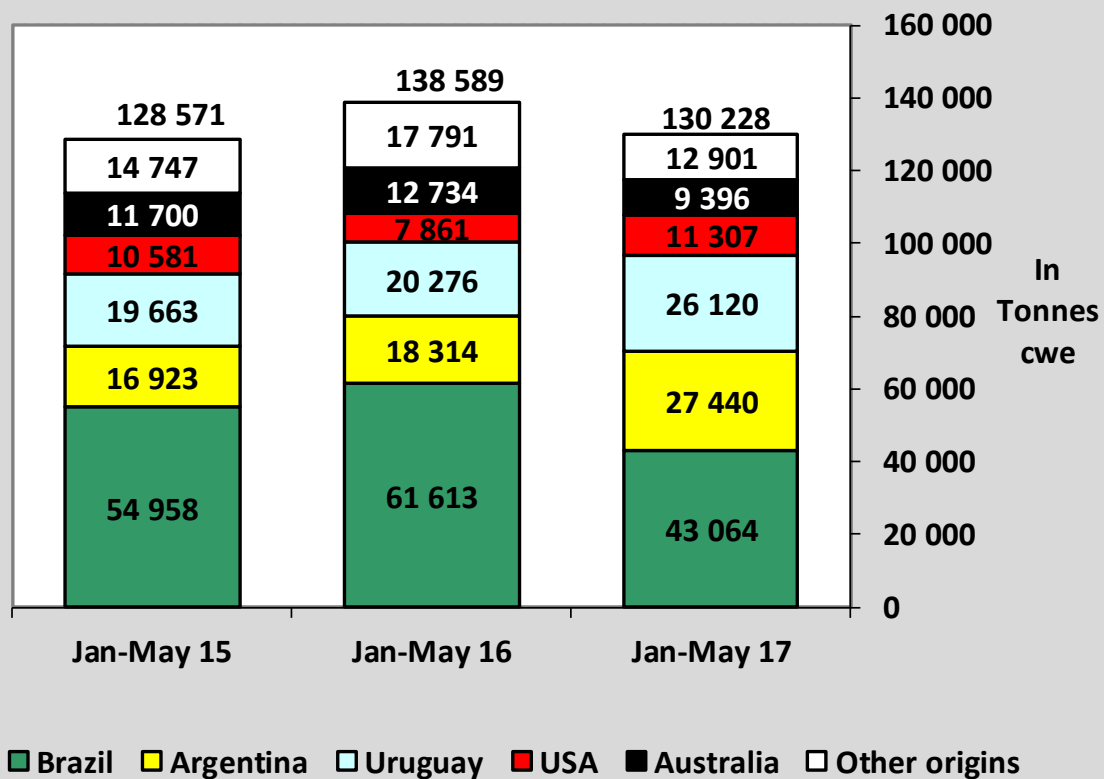
Source : Eurostat - Comext

EU-28 Exports of BEEF products



Source : Eurostat - Comext

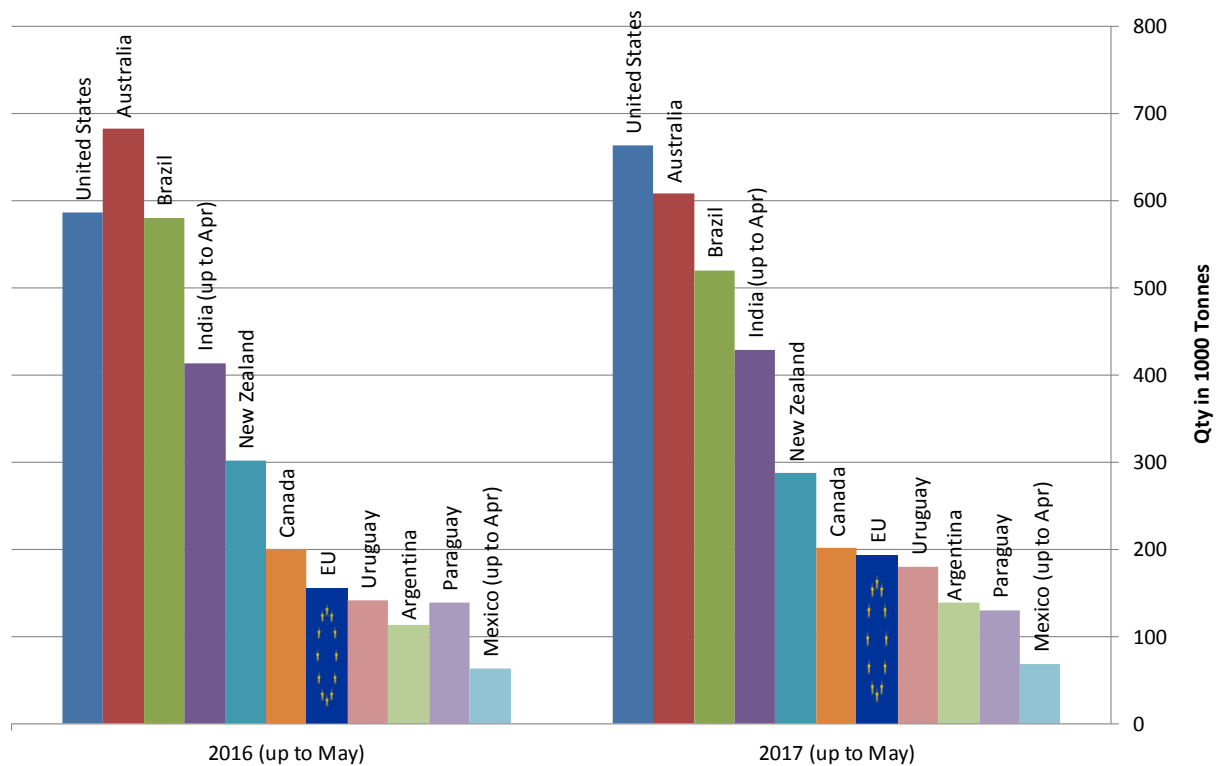
IMPORTS of Beef & Veal into EU (Tonnes cwe)



Source : Eurostat - Comext

Main Exporters of BEEF Products (up to May)

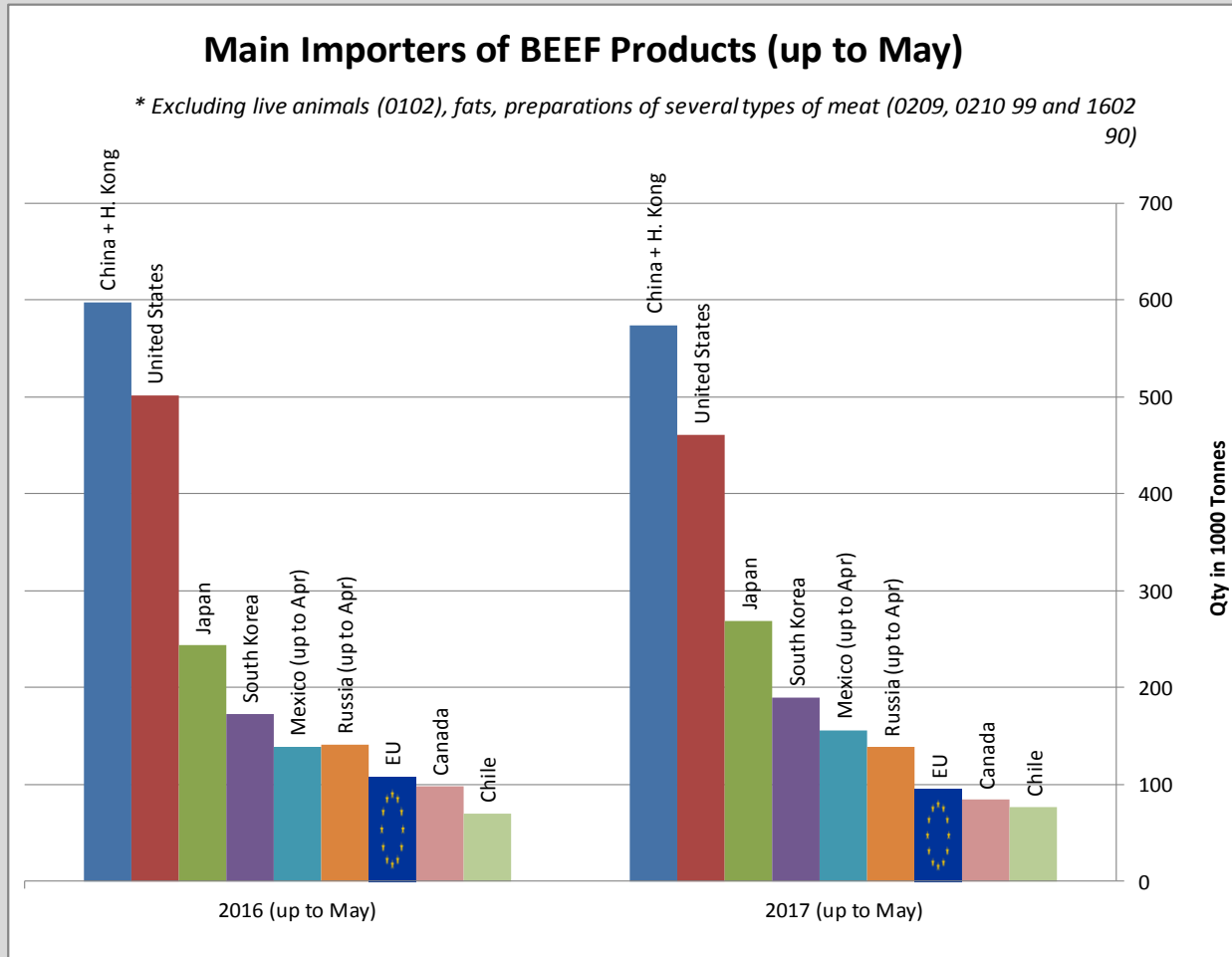
* Excluding live animals (0102), fats, preparations of several types of meat (0209, 0210 99 and 1602 90)



Sources : Global Trade Information Services, Inc. and Eurostat - Comext

Main Importers of BEEF Products (up to May)

* Excluding live animals (0102), fats, preparations of several types of meat (0209, 0210 99 and 1602 90)



Sources : Global Trade Information Services, Inc. and Eurostat - Comext