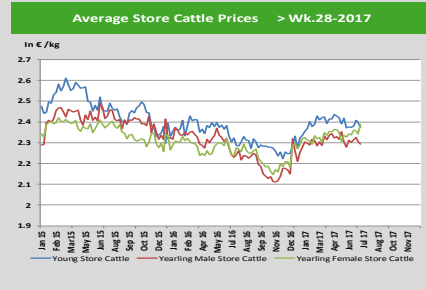
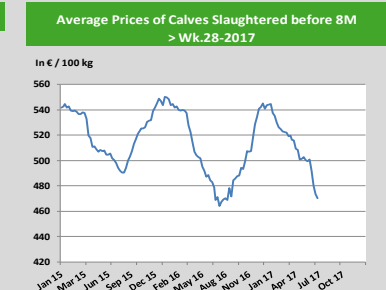
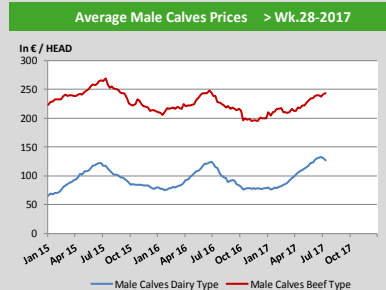
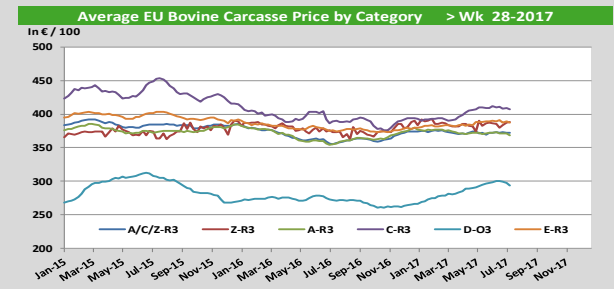
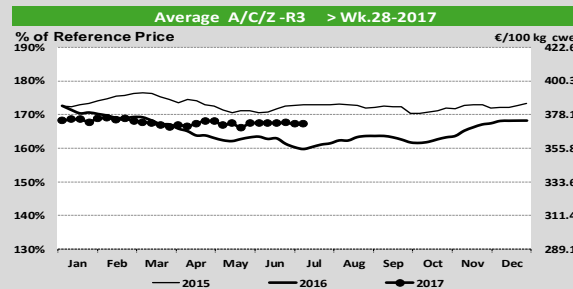


Prices

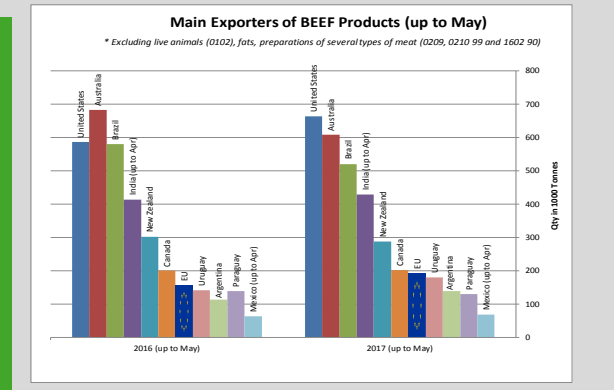
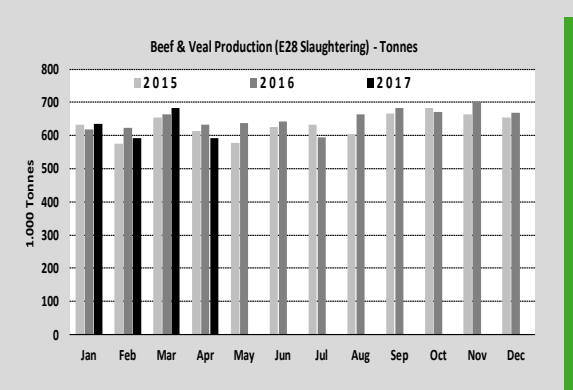
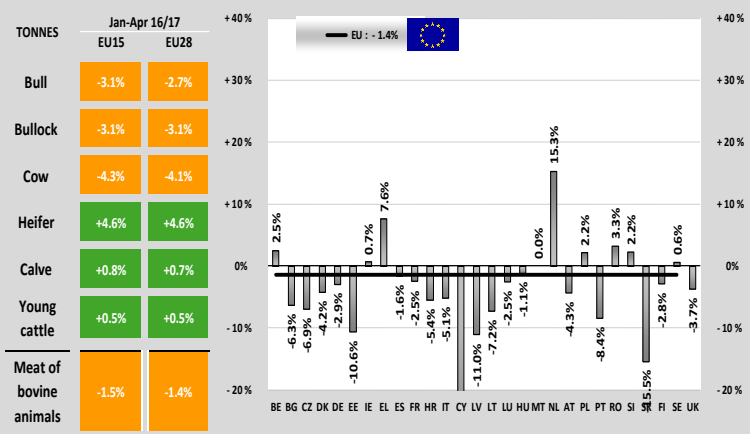
Carcasse

Live Animals

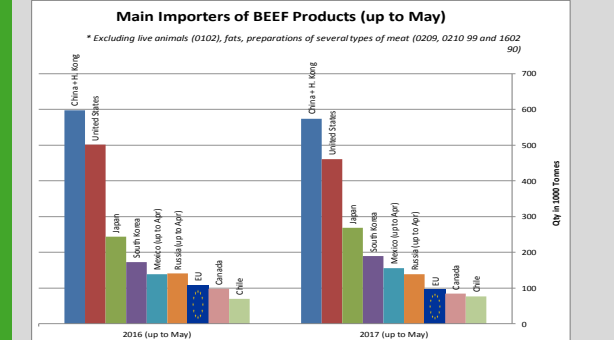
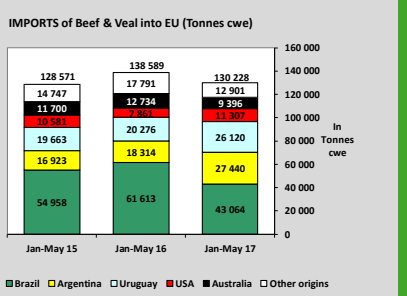
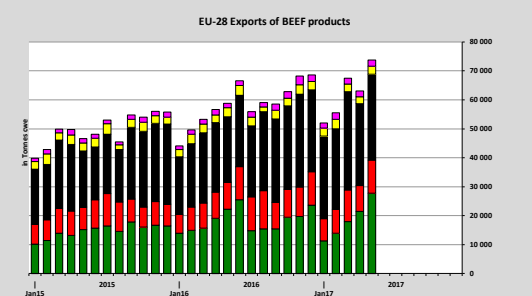
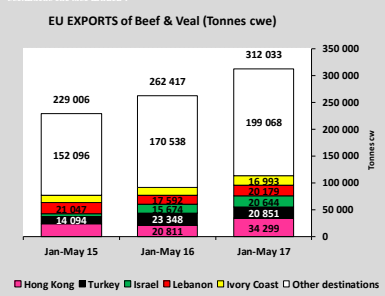
EU Prices week	28	Evolution since last week	Evolution since last month	Evolution since last year
Average A/C/Z-R3	371.0	-0.3%	-0.2%	+4.5%
Young Bovines (Z)	388.0	+0.2%	+0.6%	+0.2%
Young Bulls (A)	365.0	-0.4%	-0.4%	+3.8%
Steers (C)	411.9	-0.1%	-0.2%	+5.0%
Cows (D)	293.5	-1.3%	-2.3%	+7.8%
Heifers (E)	387.5	-0.5%	-0.5%	+3.1%
Male Calves Dairy Type	126.8	-2.7%	-2.2%	+10.6%
Male Calves Beef Type	242.9	+0.3%	+1.2%	+0.3%
Young Store Cattle	2.37	-1.0%	+0.0%	+2.2%
Yearling Male Store Cattle	2.29	-0.6%	-0.3%	+2.8%
Yearling Female Store Cattle	2.39	+1.9%	+2.1%	+6.7%
Calves slaughtered <8M	470.0	-0.7%	-6.1%	+0.3%



Production



Trade

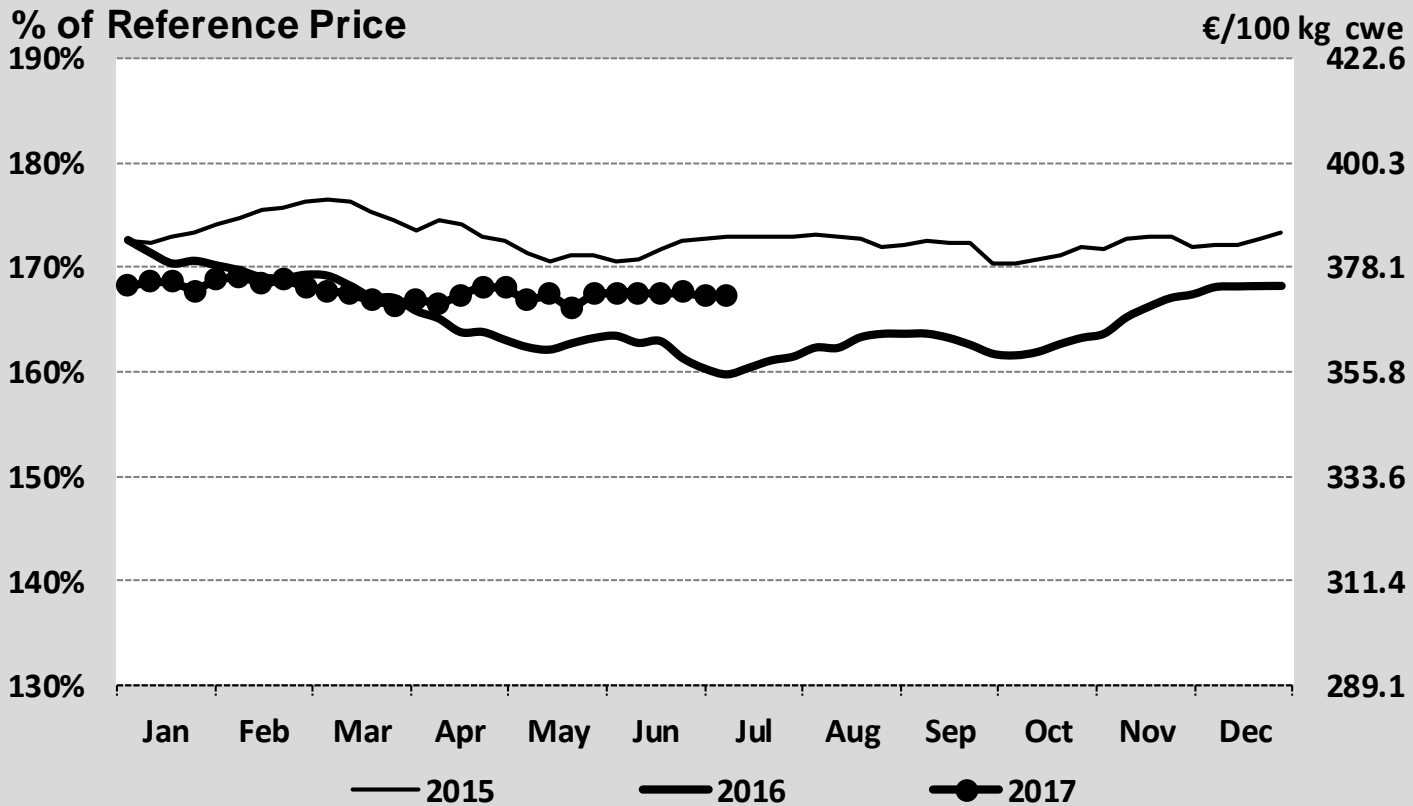


World Trade

EU Prices week		28	Evolution since last week	Evolution since last month	Evolution since last year
Carcasse	Average A/C/Z -R3	371.	- 0.3%	- 0.2%	+ 4.5%
	Young Bovines (Z)	388.	+ 0.2%	+ 0.6%	+ 0.2%
	Young Bulls (A)	365.	- 0.4%	- 0.4%	+ 3.8%
	Steers (C)	411.9	- 0.1%	- 0.2%	+ 5.0%
	Cows (D)	293.5	- 1.3%	- 2.3%	+ 7.8%
	Heifers (E)	387.5	- 0.5%	- 0.5%	+ 3.1%
Live Animals	Male Calves Dairy Type	126.8	- 2.7%	- 2.2%	+ 10.6%
	Male Calves Beef Type	242.9	+ 0.3%	+ 1.2%	+ 0.3%
	Young Store Cattle	2.37	- 1.0%	+ 0.0%	+ 2.2%
	Yearling Male Store Cattle	2.29	- 0.6%	- 0.3%	+ 2.8%
	Yearling Female Store Cattle	2.39	+ 1.9%	+ 2.1%	+ 6.7%
	Calves slaughtered <8M	470.	- 0.7%	- 6.1%	+ 0.3%

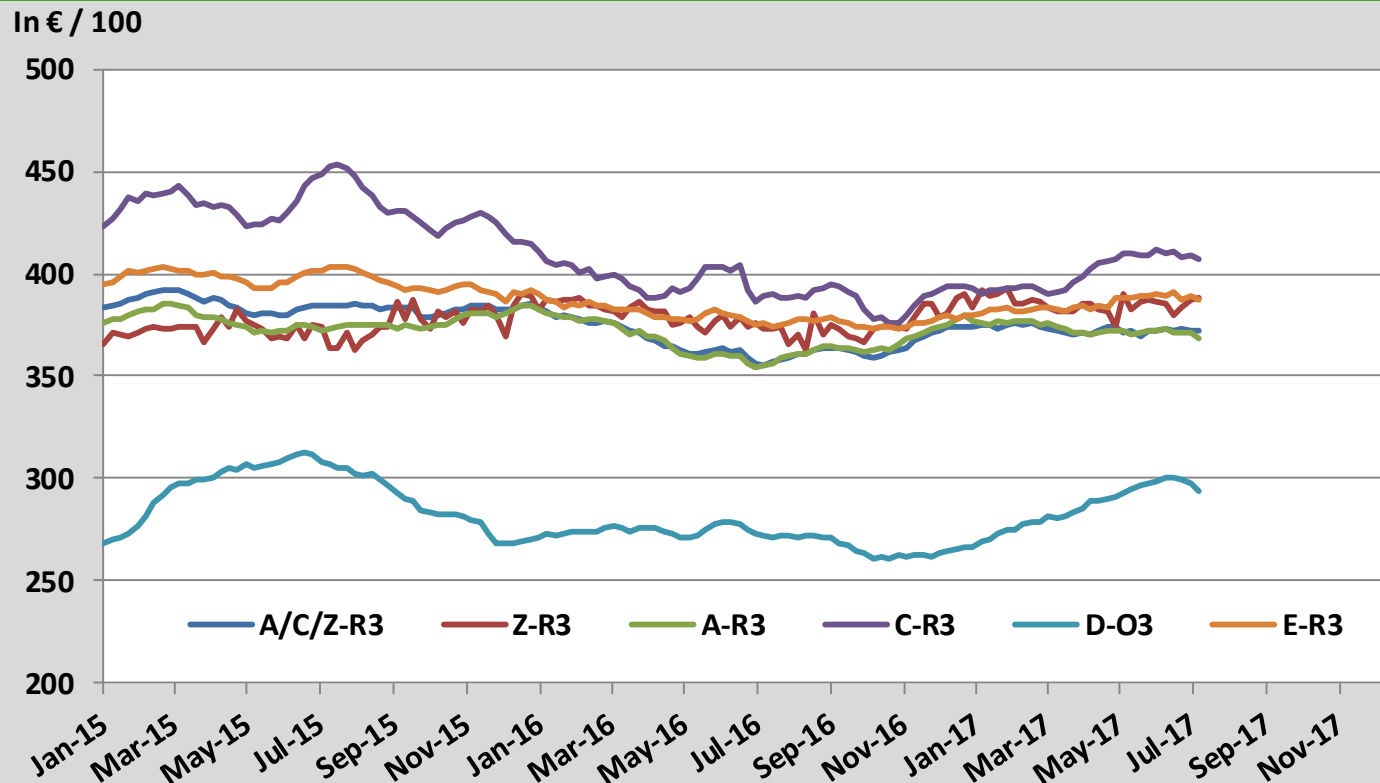
Sources : MSs notifications (Regulation (EC) 1249/2008 and 807/2013)

Average A/C/Z -R3 > Wk.28-2017



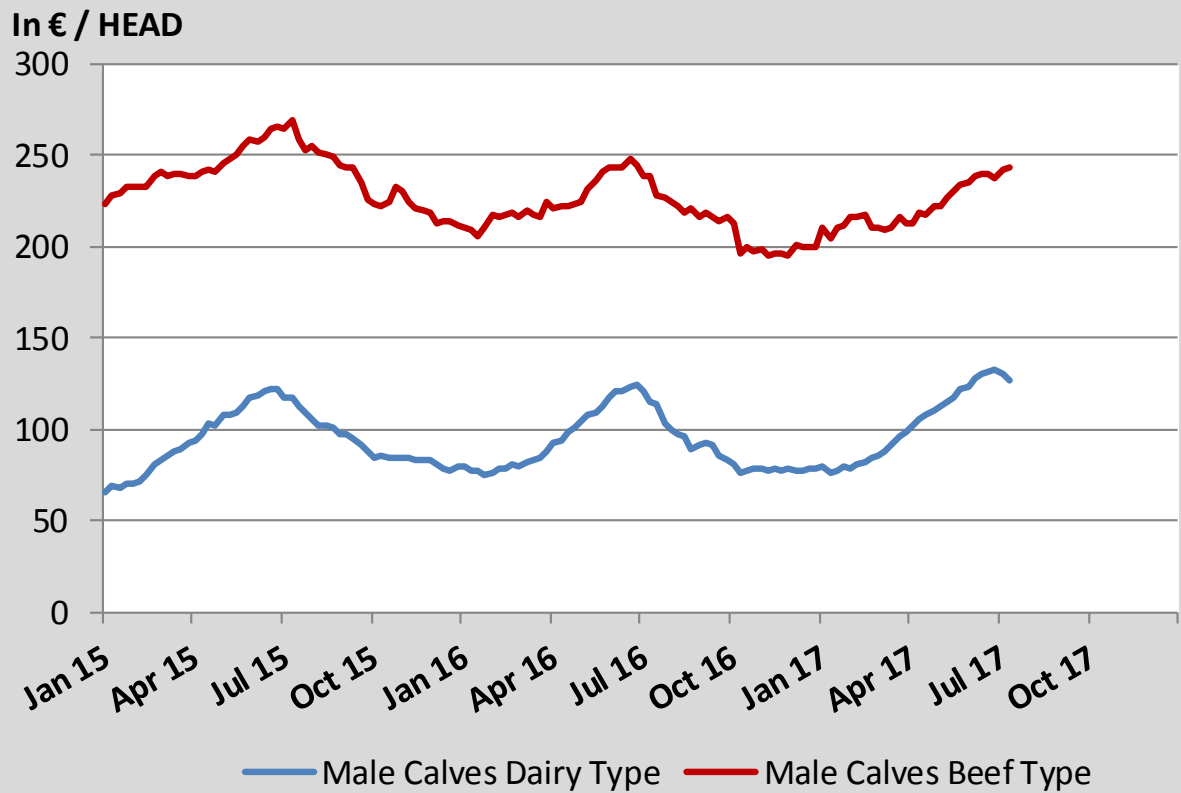
Source : MSs notifications (Regulation (EC) 1249/2008)

Average EU Bovine Carcasse Price by Category > Wk 28-2017



Source : MSs notifications (Regulation (EC) 1249/2008)

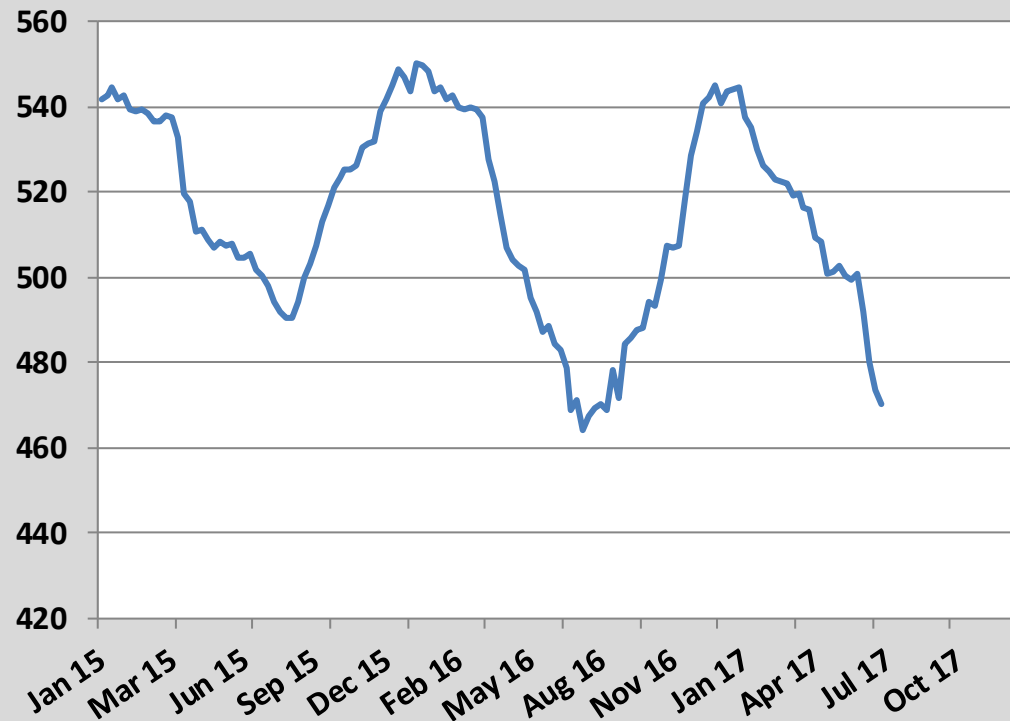
Average Male Calves Prices > Wk.28-2017



Source : MSs notifications (Regulation (EC) 807/2013)

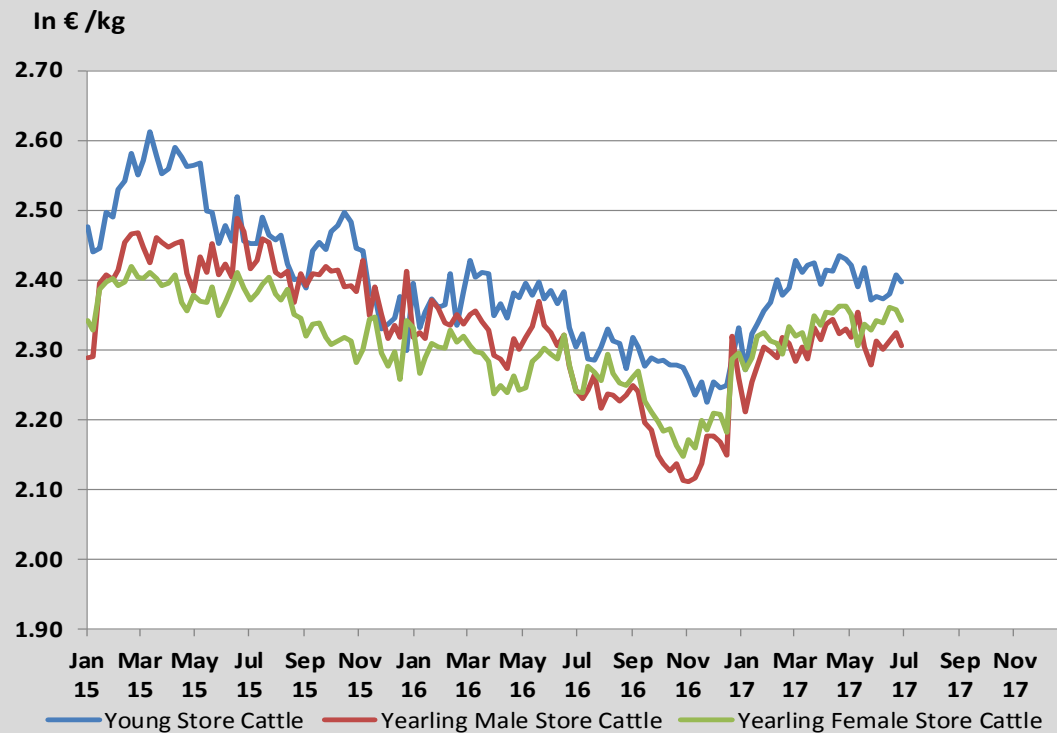
Average Prices of Calves Slaughtered before 8M > Wk.28-2017

In € / 100 kg



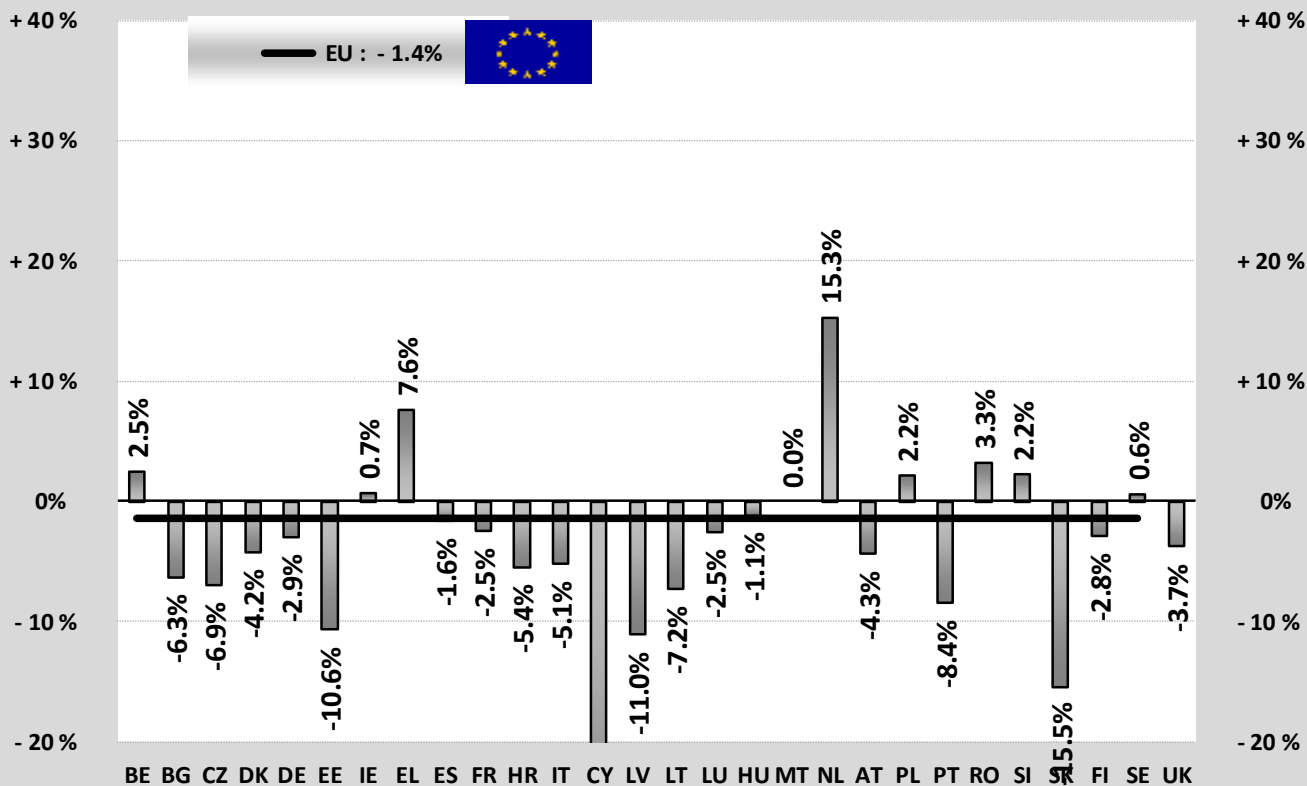
Source : MSs notifications (Regulation (EC) 807/2013)

Average Store Cattle Prices > Wk.27-2017



Source : MSs notifications (Regulation (EC) 807/2013)

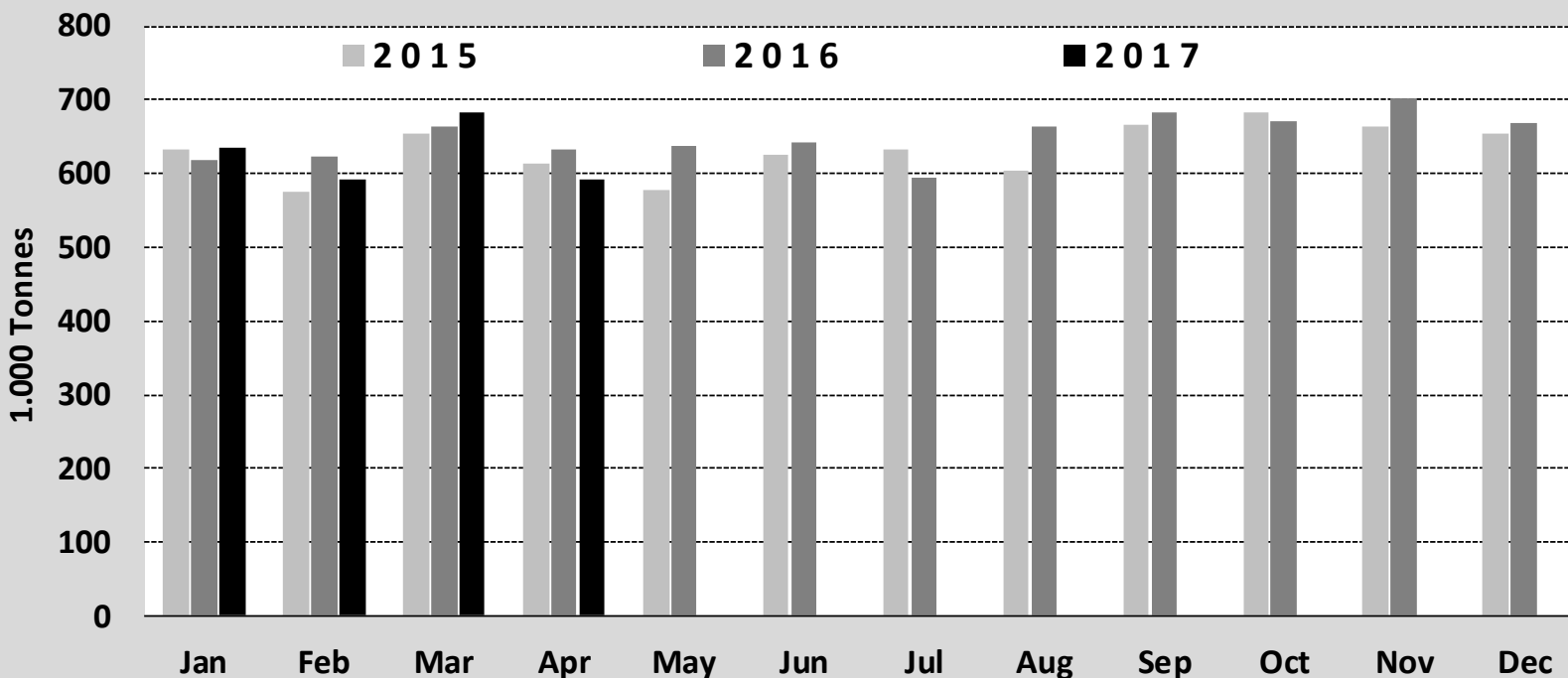
TONNES	Jan-Apr 16/17	
	EU15	EU28
Bull	-3.1%	-2.7%
Bullock	-3.1%	-3.1%
Cow	-4.3%	-4.1%
Heifer	+4.6%	+4.6%
Calve	+0.8%	+0.7%
Young cattle	+0.5%	+0.5%
Meat of bovine animals	-1.5%	-1.4%



Estimates for last month :

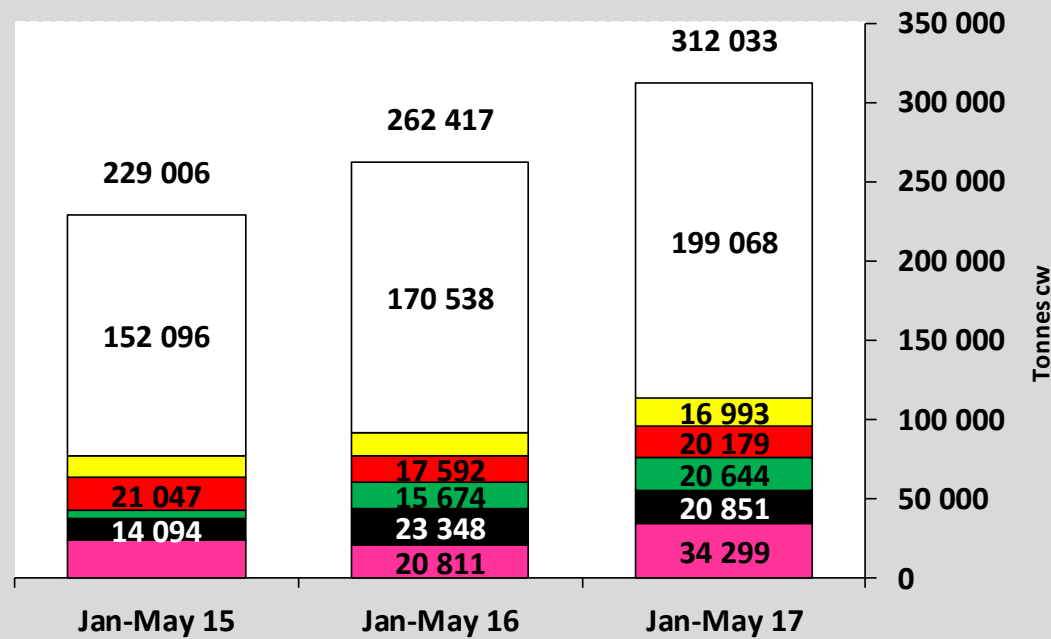
Source : Eurostat

Beef & Veal Production (E28 Slaughtering) - Tonnes



Source : Eurostat

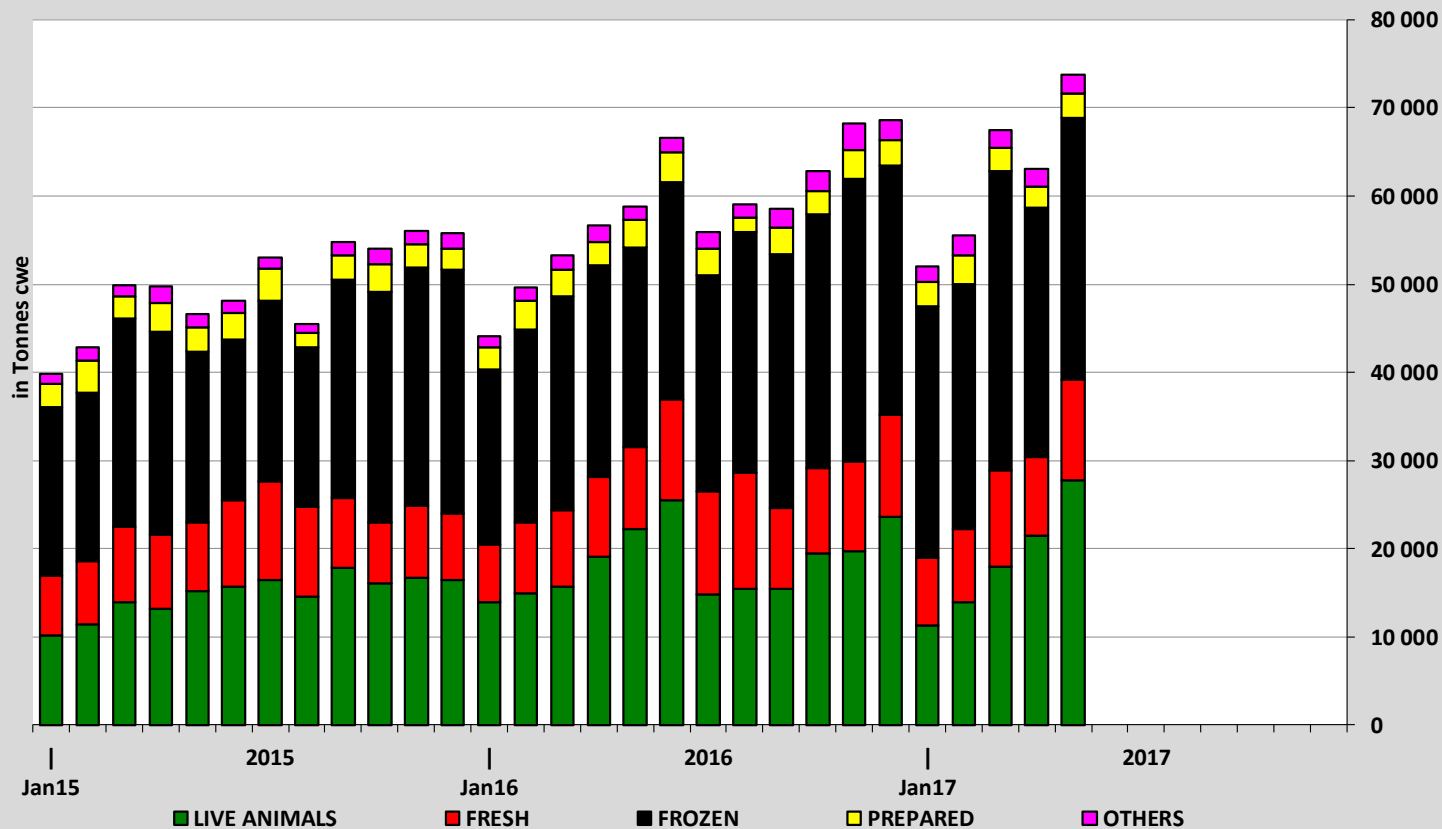
EU EXPORTS of Beef & Veal (Tonnes cwe)



■ Hong Kong
 ■ Turkey
 ■ Israel
 ■ Lebanon
 ■ Ivory Coast
 ■ Other destinations

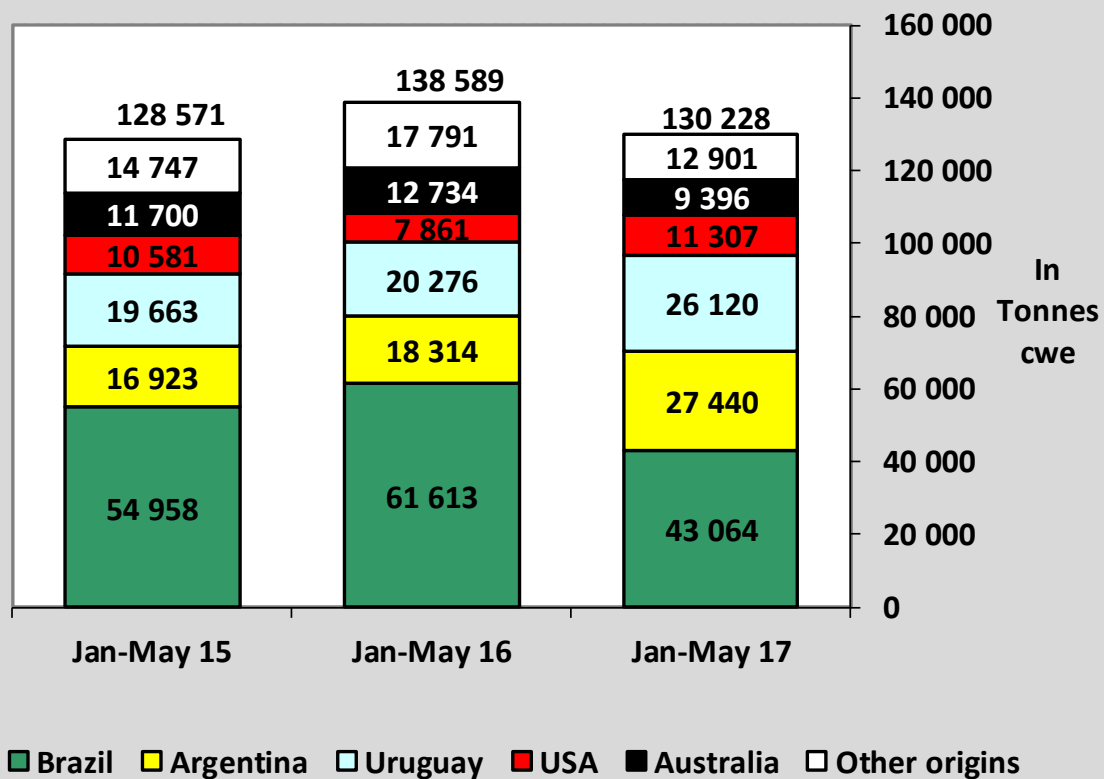
Source : Eurostat - Comext

EU-28 Exports of BEEF products



Source : Eurostat - Comext

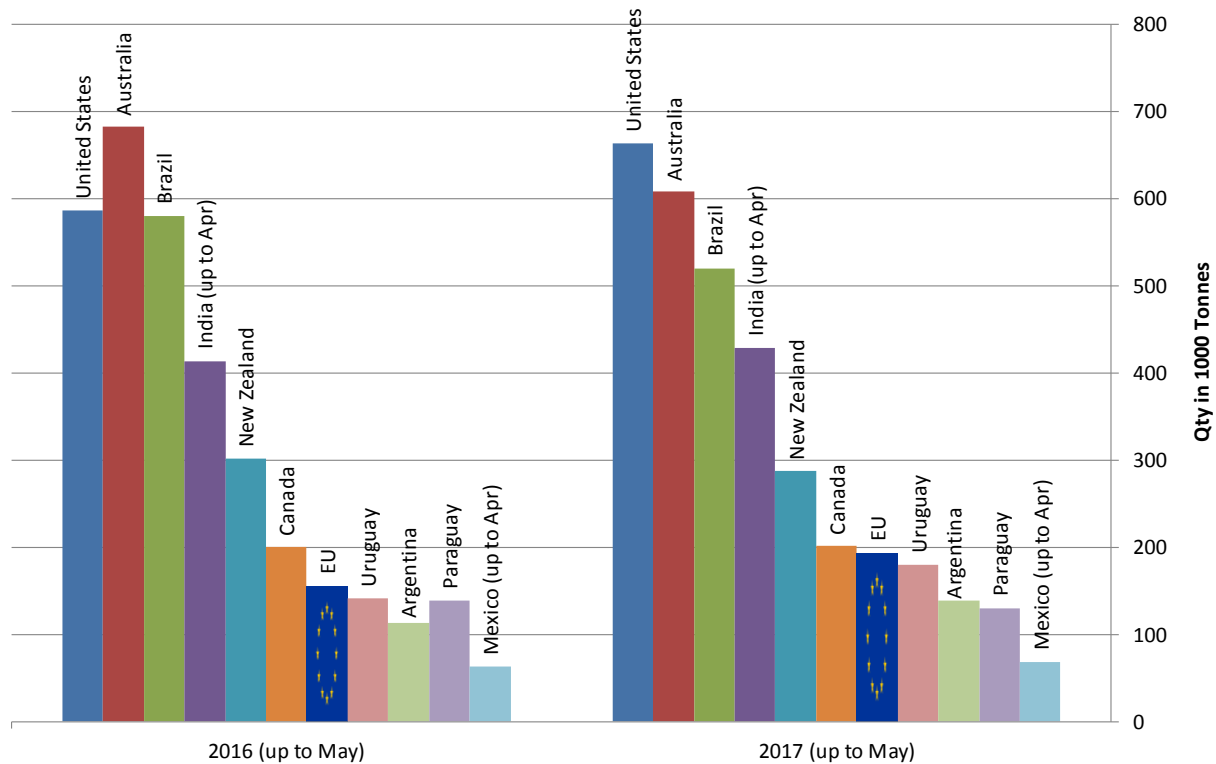
IMPORTS of Beef & Veal into EU (Tonnes cwe)



Source : Eurostat - Comext

Main Exporters of BEEF Products (up to May)

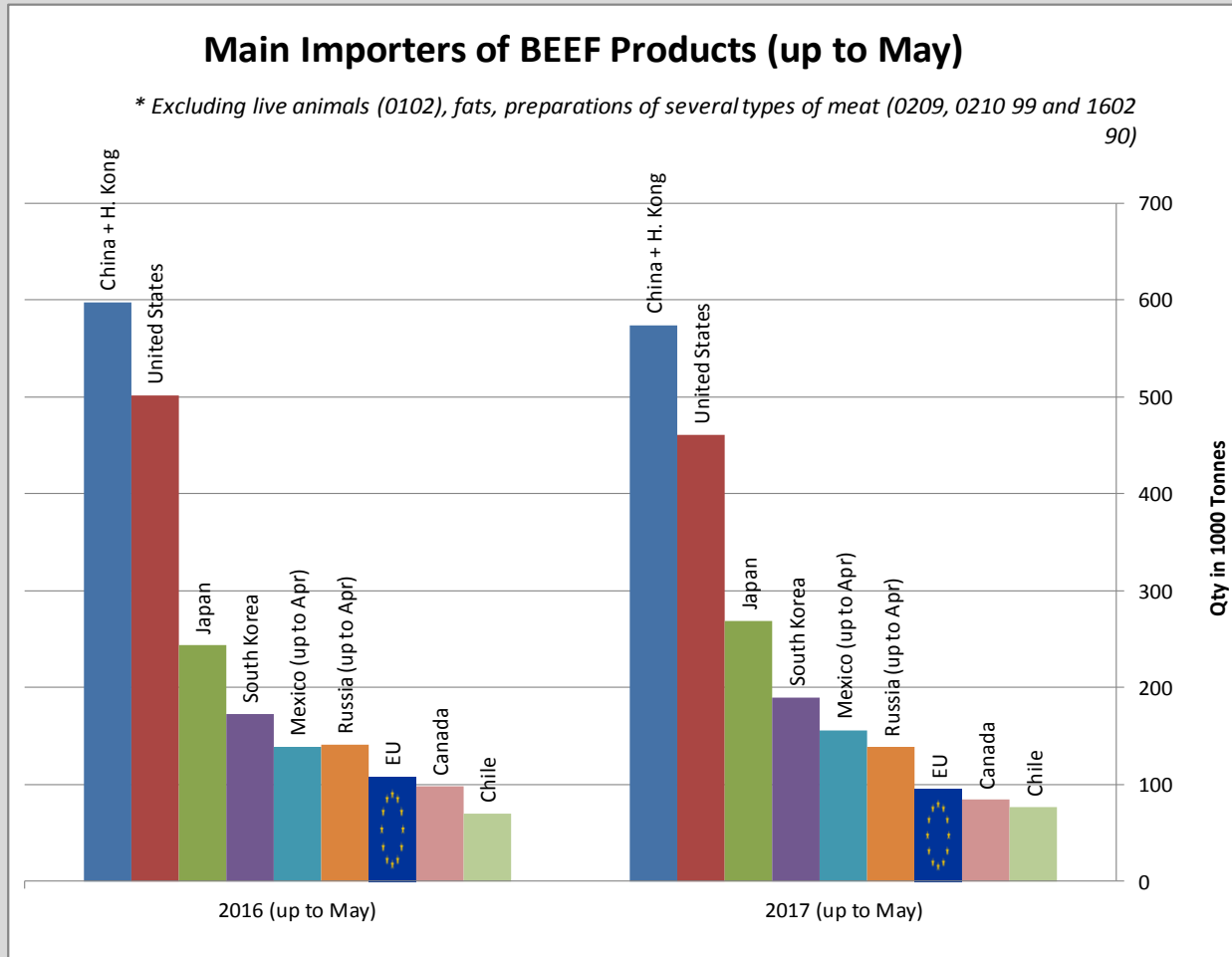
* Excluding live animals (0102), fats, preparations of several types of meat (0209, 0210 99 and 1602 90)



Sources : Global Trade Information Services, Inc. and Eurostat - Comext

Main Importers of BEEF Products (up to May)

* Excluding live animals (0102), fats, preparations of several types of meat (0209, 0210 99 and 1602 90)



Sources : Global Trade Information Services, Inc. and Eurostat - Comext